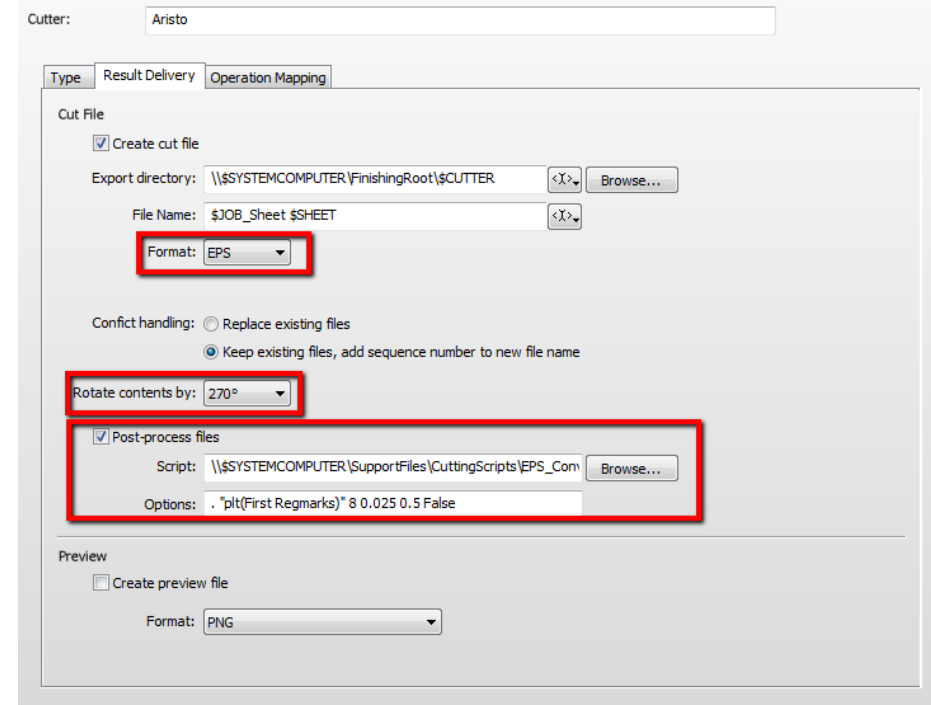
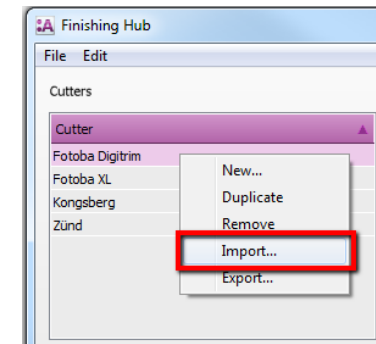
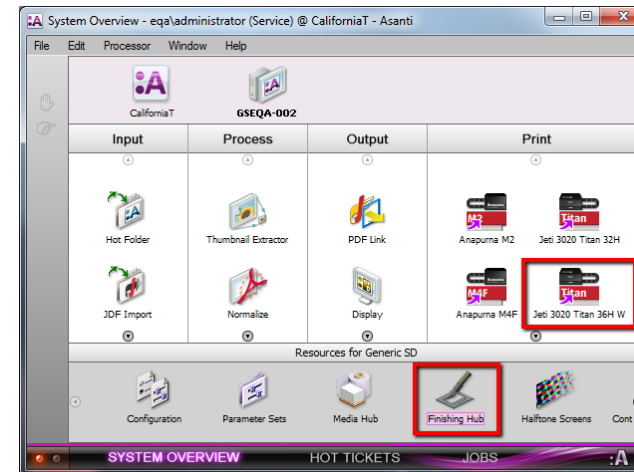


Aristo Cutter Integration Note

This document explains how to drive the Aristo cutter. You have to download the latest 'Aristo' resources and sample files from '[Asanti 4.0 CutterResources](#)' and extract the zip file.

1. Import the Aristo Cutter

1. Open the 'System Overview', select a digital printer and double click the 'Finishing Hub' Resource.
2. Context click in the 'Cutters' and choose 'Import'
3. Locate the 'Aristo' cutter in '`...\Asanti_4.0_CutterResources\Aristo\Cutter`' and click 'Open'. Choose to 'overwrite' if the cutters already exist.
4. Unlock the 'Finishing Hub' and click the "Result delivery" tab.
5. The default export directory is set to: `\\$SYSTEMCOMPUTER\FinishingRoot\$CUTTER`.
 - \$SYSTEMCOMPUTER is a variable and will be replaced by the hostname of your Asanti Server.
 - \$CUTTER is a variable and will be replaced by the cutter name.
6. The default file name convention for the cutting file is set to: `$JOB_Sheet $SHEET`
 - \$JOB is a variable and will be replaced by the job name.
 - \$SHEET is a variable and will be replaced by the number of the print layout.
7. Format 'EPS' must be set and the content must be rotated 270° 'Post-process files' is enabled with a set of options to convert the EPS file to a PLT file which can be used with the Aristo cutter. If you setup a 'Hot folder' (see [Import PLT file in Aristo CutterControlPanel \(CCP\)](#)) you can replace the first dot with that shared input folder to write the PLT files.

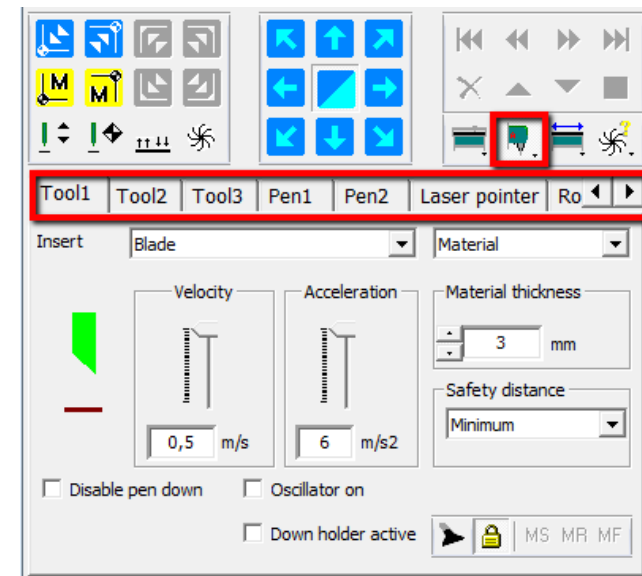
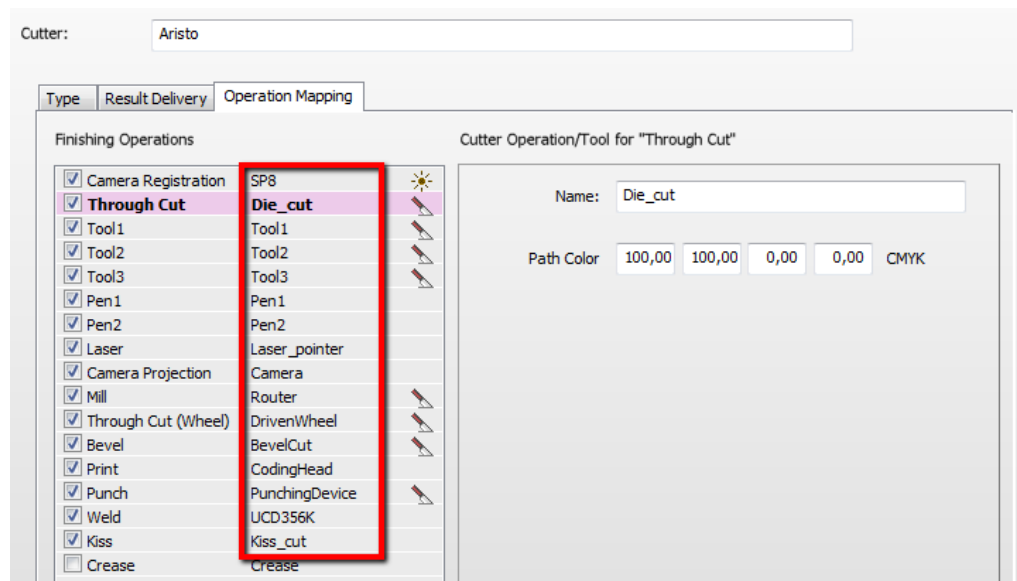
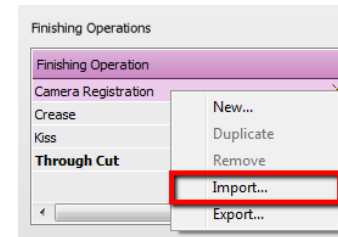
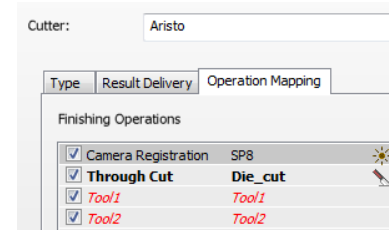


Options: `"\\systemname\inputAristo" "plt(First Regmarks)" 8 0.025 0.`

- Click the "Operation Mapping" tab.
When there are 'Finishing Operations' enabled and missing (red italic), go to the next step.

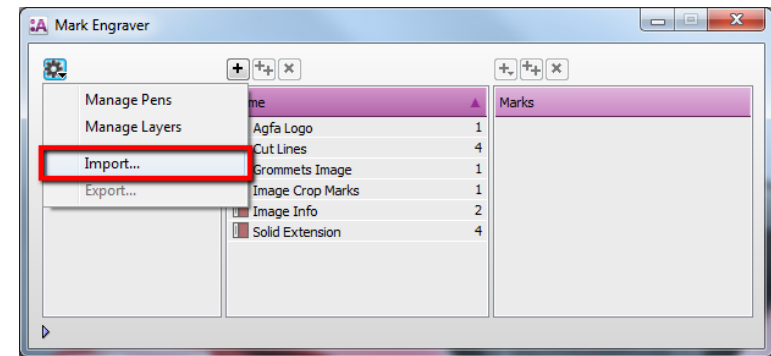
2. Import the Aristo Finishing Operations

- In the 'Finishing Hub', context click in the 'Finishing Operations' and choose 'Import'
- Locate the finishing operations in '`...\Asanti_4.0_CutterResources\Aristo\Finishing Operations`', select all operations and click 'Open'.
- Choose to 'overwrite' if the finishing operation already exists.
- Select the 'Aristo' cutter again and click the "Operation Mapping" tab. The finishing operations in Asanti now correspond with the tool names and colors provided in Aristo CutterControlPanel (CCP).
- Close the 'Finishing Hub'.

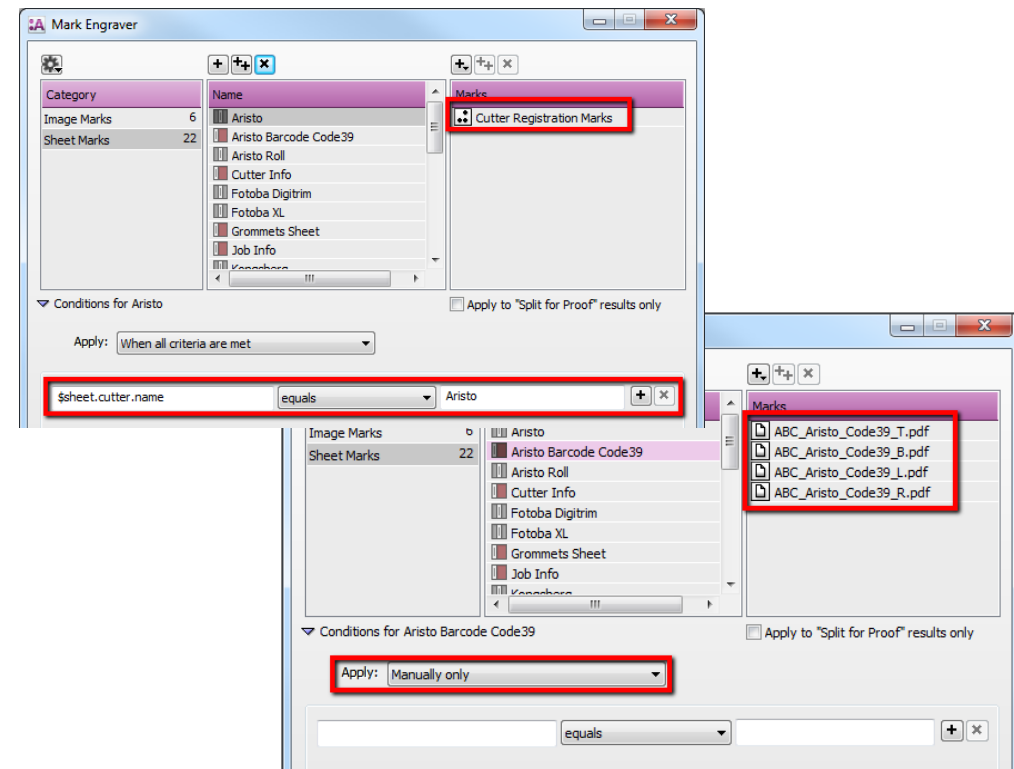



3. Import the Aristo Mark Sets

1. Open the 'System Overview, select the 'Impose' Task Processor and double click the 'Mark Engraver' Resource
2. Click the cog wheel to import the 'Mark Sets'
3. Locate the mark sets in '...\Asanti_4.0_CutterResources\Aristo\Mark Sets' and click 'Open'.
4. Choose to 'overwrite' if the mark set already exists



5. Click the 'Sheet Marks' category
 - a. The 'Aristo' Mark Set contains the registration marks and will automatically be used when you select the Aristo cutter in your job.
 - b. The 'Aristo Roll' Mark Set contains the registration marks for roll media and will automatically be used when you select the Aristo Roll cutter in your job.
 - c. The 'Aristo Barcode Code39' contains a barcode at each edge and can be enabled manually in your job.

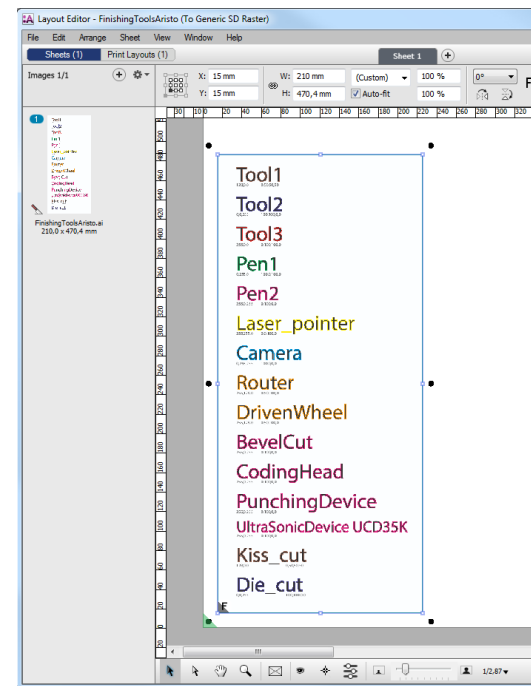
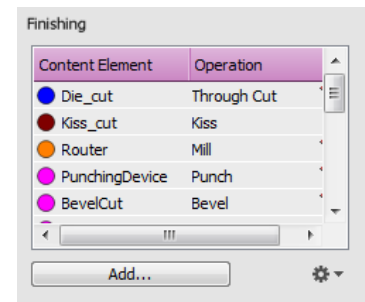
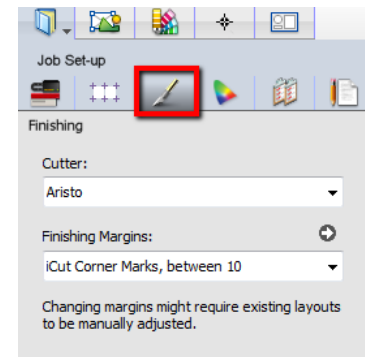


Unlock  the 'Mark Engraver' if you want to change the settings or conditions of these mark sets.

6. Close the 'Mark Engraver'.

4. Create a job

1. In the 'Jobs' window, select File menu > New Layout Job.
2. Open the 'Finishing Inspector'.
3. Select Cutter 'Aristo', select 'Finishing Margins' e.g. iCut Corner Marks, between 10.
4. In the 'Images panel' click '+'.
 5. Locate the sample files in '...\Asanti_4.0_CutterResources\Aristo\Sample Files' and click 'Open'.
 6. Select the image in the 'Images panel'.
 7. Open the 'Image Inspector' (Alt+2)
 8. You can see that all spot colors (content element) in this sample file are automatically assigned to corresponding finishing operations e.g. Die_cut is assigned to Through Cut. If this is not the case, context click a content element and choose 'Add' or 'Edit' to assign a spot color to the correct finishing operation.
9. Drag the image from the Images panel to the Sheet.
10. Verify if the Cutter Registration Marks are automatically placed.
11. Submit job, choose for Print files: 'Make and send to printer' and for Cut Files: 'Make and send to cutter'.



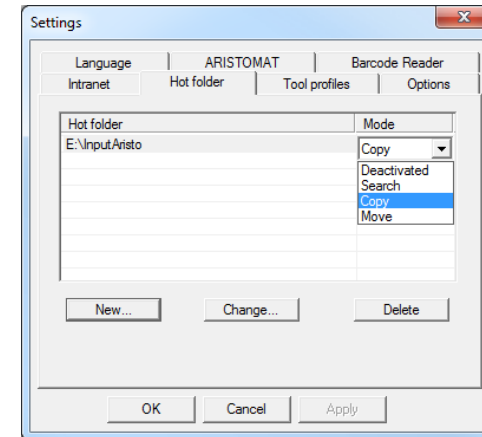
Import PLT file in Aristo CutterControlPanel (CCP)

1. Start the CutterControlPanel
2. To import a PLT file in the 'Plot memory':
 - a. Browse to the export directory of Asanti
 “\SYSTEMCOMPUTER\FinishingRoot\%CUTTER” and drag the PLT file on the CutterControlPanel
 - b. Setup a 'Hot folder' and browse to the export directory of Asanti (or the location specified in the 'Options' for the Post-process files).

Options: "\\systemname\inputAristo" *plt(First Regmarks)* 8 0.025 0..

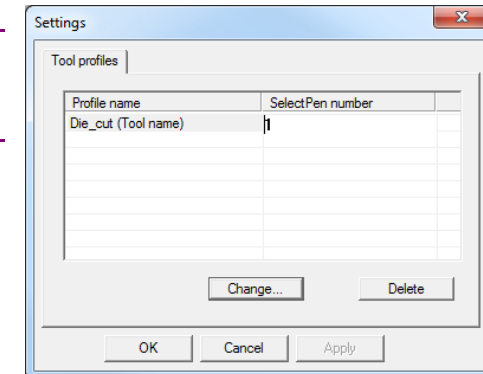
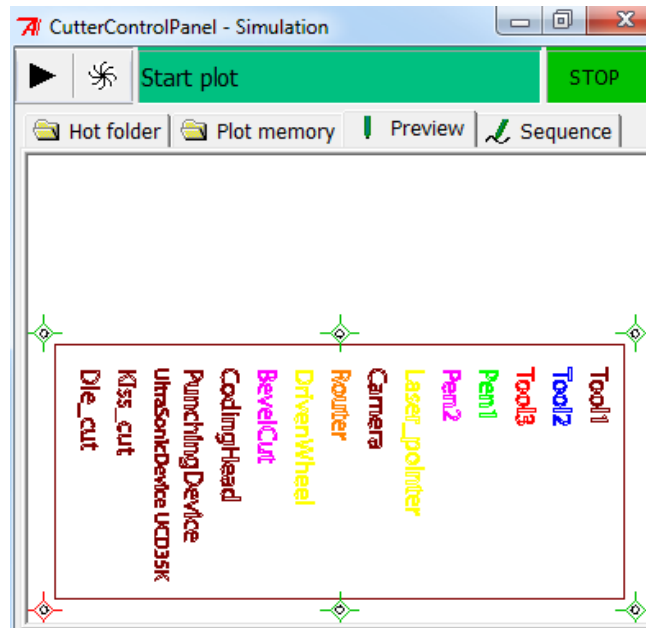
- choose 'Search'. The PLT files can be loaded by double click in the 'Hot folder' tab.
- choose 'Copy' or 'Move'. The PLT file are now loaded automatically

Aristo menu > Settings > Hot folder



The first time a PLT file with new 'Tools' is imported you need to map the tools created by Asanti to the corresponding 'SelectPen number'. E.g., 'Tool1' to number 1.

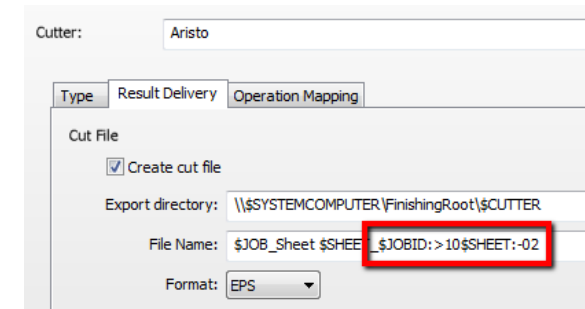
3. After import into the 'Plot memory', you can see the cut paths in the 'Preview' and the order of cutting in the 'Sequence'.



5. Using barcodes

Setup the Aristo Cutter for using barcodes

1. In the 'Finishing Hub' Resource (Ctrl+Alt+2), select the 'Aristo' cutter.
2. In the 'Result Delivery' tab, you have to add "`$_JOBID:>10$$SHEET:-02`" to the 'File Name' convention:
 - \$JOBID is a variable and will be replaced by a unique internal jobid, clipped at 10 characters.
 - \$\$SHEET is a variable and will be replaced by the number of the print layout, clipped at 2 characters.

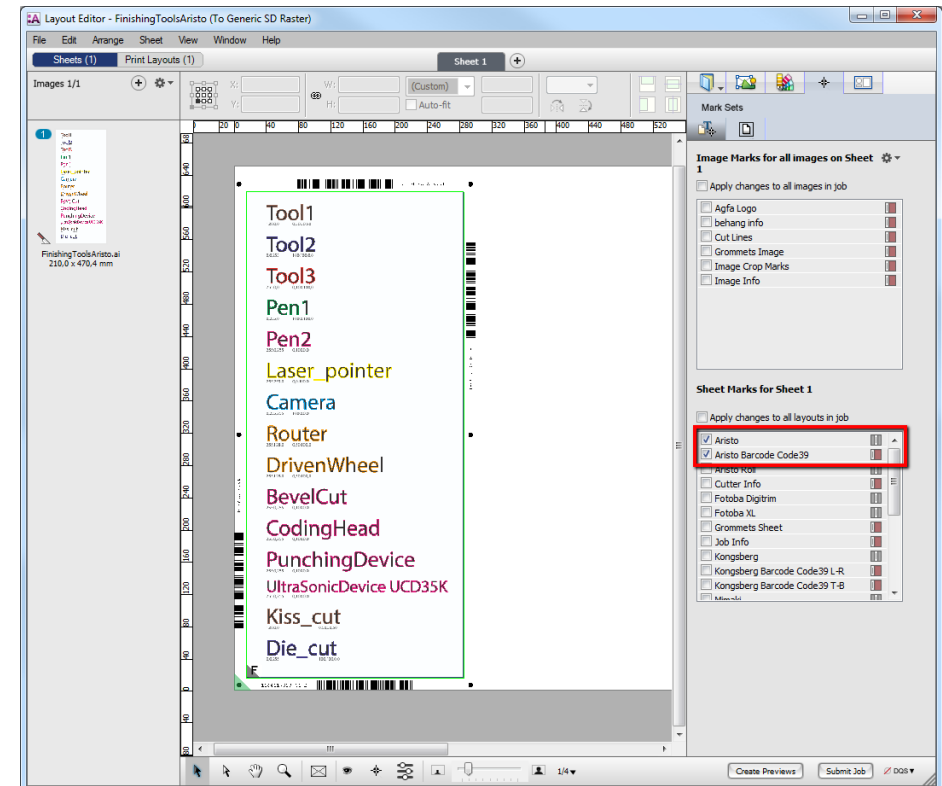


Most barcode hand scanners support up to 12 characters. You can also add this unique number in front of the 'File Name'.

3. Close the 'Finishing Hub'

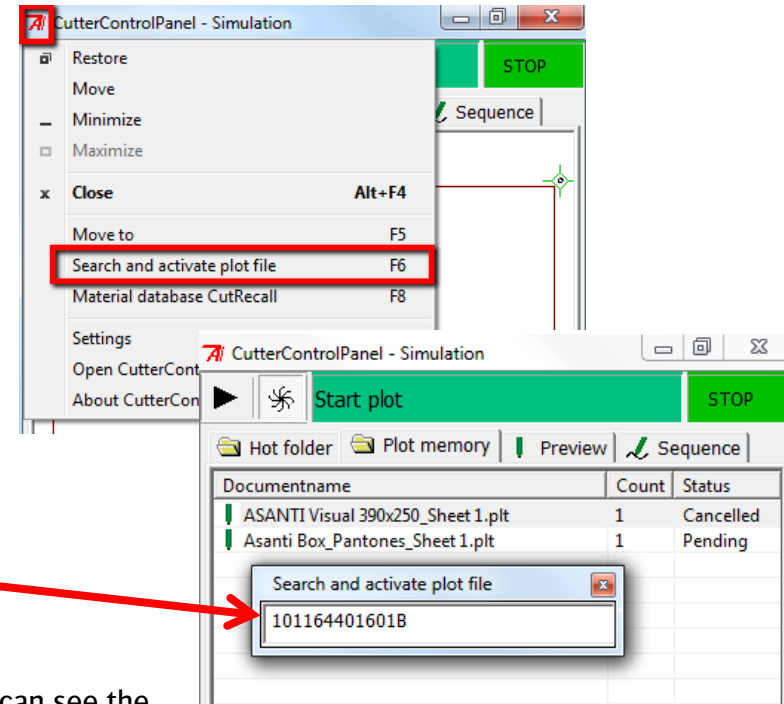
Create a job with a barcode Mark Set

1. In the 'Jobs' window, duplicate the job created before (see [4. Create a job](#)) and scale the image 130 %.
2. Open the 'Mark Sets Inspector' (Alt+4)
3. Select the 'Aristo Barcode Code39' mark set in the Sheet Marks category
4. Submit job, choose for Print files: 'Make and send to printer' and for Cut Files: 'Make and send to cutter'.

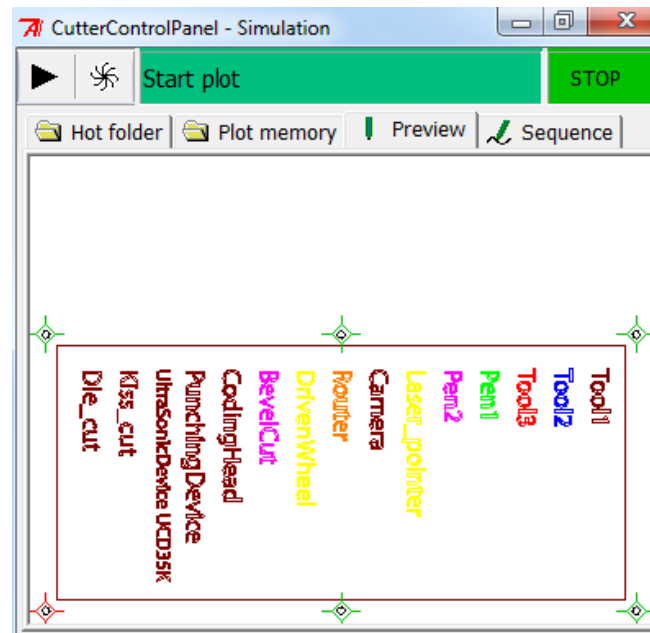


Import a PLT file with a barcode scanner

1. In the Aristo menu, choose 'Search and activate plot file' (F6).
2. Read the barcode with the 'Barcode' hand scanner (or enter the numbers from the text displayed next to the barcode).
The last character of the barcode data is an indicator for the orientation (B,T,L,R).



3. Close the 'Search and activate plot file' dialog.
4. The file is now imported and selected in the 'Plot memory' and you can see the cut paths in the 'Preview' and the order of cutting in the 'Sequence'.



6. Using roll media

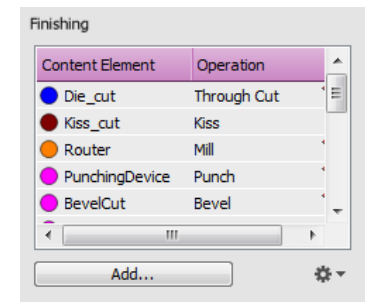
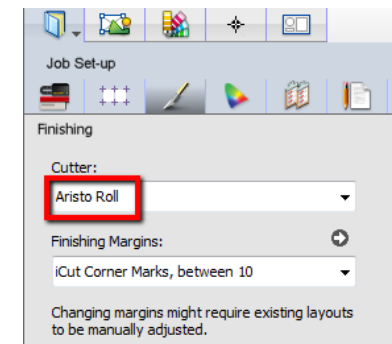
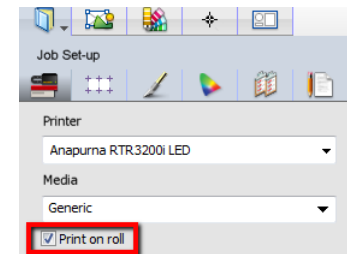
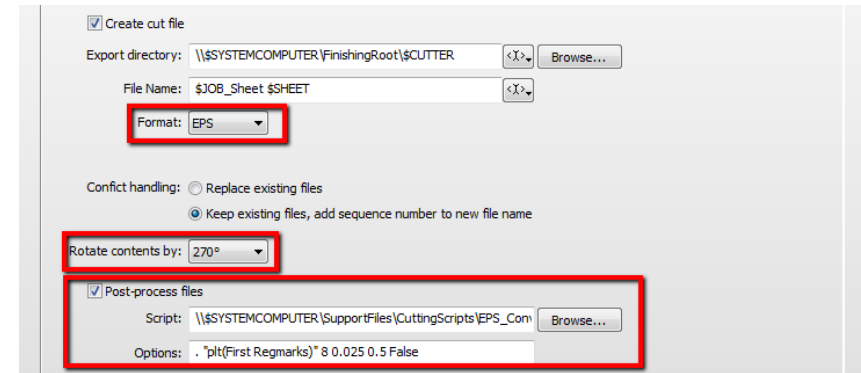
For roll mode, it is only allowed to have registration marks at the left and right side of the roll media. Therefore, we provided an 'Aristo Roll' cutter and an 'Aristo Roll' mark set with the "Asanti_4.0_CutterResources".

1. In the 'Finishing Hub' Resource (Ctrl+Alt+2), select the 'Aristo Roll' cutter.

The settings for this cutter are similar with the 'Aristo' cutter. For automation you can replace the first dot with the shared 'Hot folder' location used by the CutterControlPanel (Aristo menu > Settings > Hot folder).

Options: `"\\systemname\inputAristo" *plt(First Remarks)* 8 0.025 0.`

2. In the 'Jobs' window, select File menu > New Layout Job.
3. Open the 'Job Set-up Inspector'.
4. Select 'Print on roll'
5. Open the 'Finishing Inspector'.
6. Select Cutter 'Aristo Roll', select 'Finishing Margins' e.g. iCut Corner Marks, between 10.
7. In the 'Images panel' click '+'.
 8. Locate the sample files in '...\Asanti_4.0_CutterResources\Aristo\Sample Files' and click 'Open'.
9. Select the image in the 'Images panel'.
10. Open the 'Image Inspector' (Alt+2)
11. You can see that all spot colors (content element) in this sample file are automatically assigned to corresponding finishing operations e.g. Die_cut is assigned to Through Cut. If this is not the case, context click a content element and choose 'Add' or 'Edit' to assign a spot color to the correct finishing operation.



12. Drag the image from the Images panel to the Sheet.
13. Scale the image until it fits the roll media width.
14. Verify if the Cutter Registration Marks are automatically placed at the left and right side of the roll media.
15. Submit job, choose for Print files: 'Make and send to printer' and for Cut Files: 'Make and send to cutter'.

16. After import into the 'Plot memory', you can see the cut paths in the 'Preview' and the order of cutting in the 'Sequence'.

