

This document explains how to drive the Mutoh Kona cutter. You have to download the latest 'Mutoh Kona' resources and sample files from '[Asanti 4.0 CutterResources](#)' and extract the zip file.

1. Import the Mutoh Kona Cutter

1. Open the 'System Overview', select a digital printer and double click the 'Finishing Hub' Resource.
2. Context click in the 'Cutters' and choose 'Import'
3. Locate the 'Mutoh Kona' cutter in '`...\Asanti_4.0_CutterResources\Mutoh Kona\Cutter`' and click 'Open'.

Choose to 'overwrite' if the cutters already exist.

4. Unlock the 'Finishing Hub' and click the "Result delivery" tab.
5. The default export directory is set to:
`\\$SYSTEMCOMPUTER\FinishingRoot\$CUTTER`.

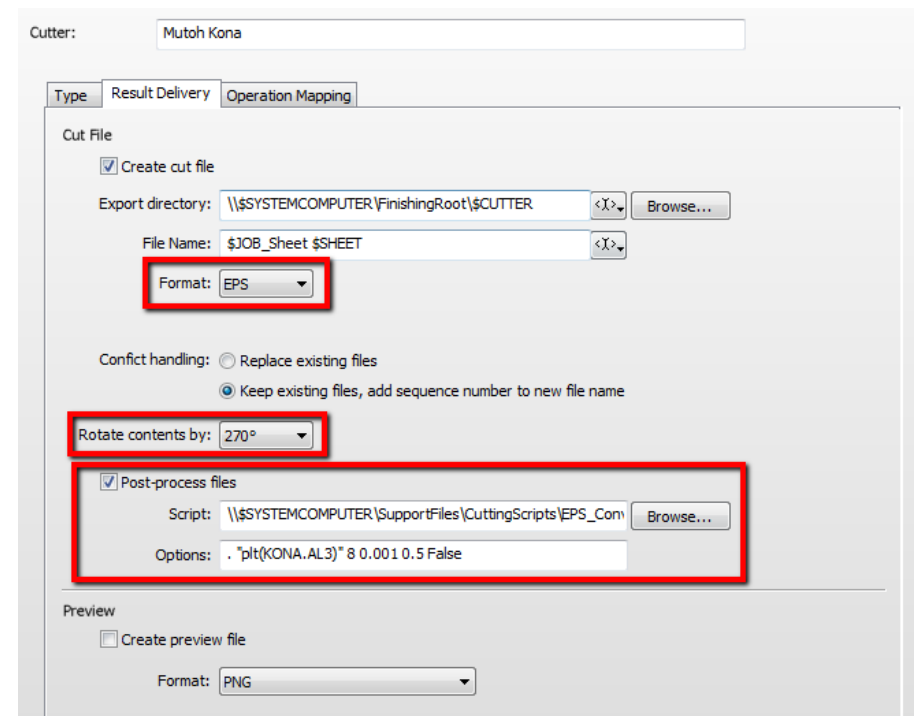
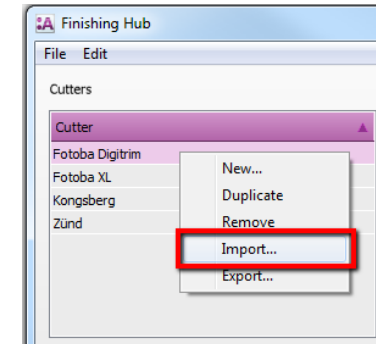
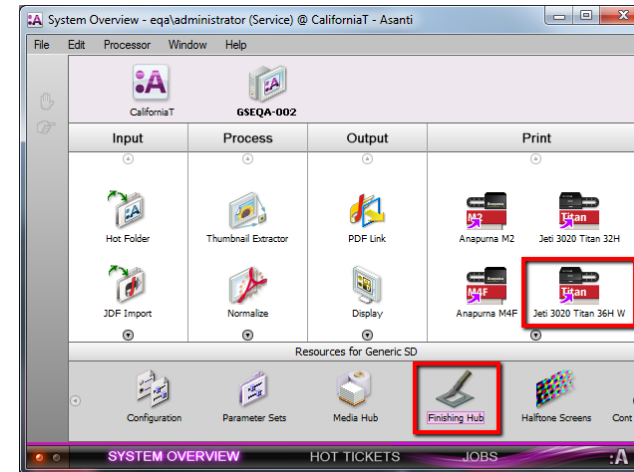
- \$SYSTEMCOMPUTER is a variable and will be replaced by the hostname of your Asanti Server.
- \$CUTTER is a variable and will be replaced by the cutter name.

6. The default file name convention for the cutting file is set to:
`$JOB_Sheet $SHEET`

- \$JOB is a variable and will be replaced by the job name.
- \$SHEET is a variable and will be replaced by the number of the print layout.

7. Format 'EPS' must be set and the content must be rotated 270°.
8. 'Post-process files' is enabled with a set of options to convert the EPS file to a PLT file which can be used with the Mutoh Kona cutter. If you setup a 'Directory' (see [Import PLT file in Mutoh CutServer](#)) you can replace the first dot with that shared input folder to write the PLT files.

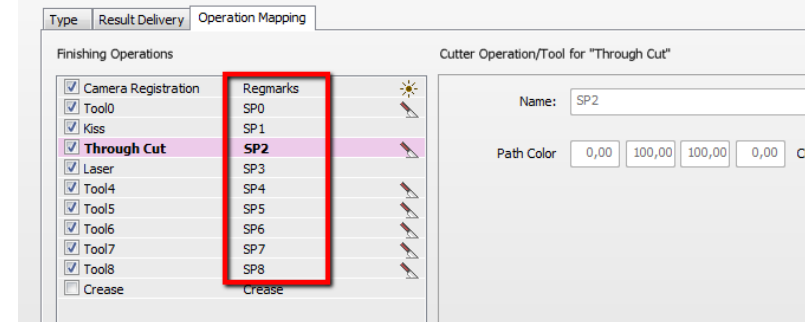
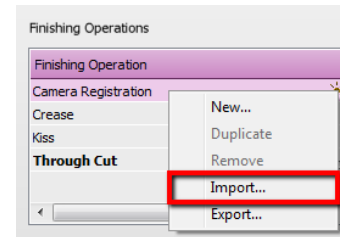
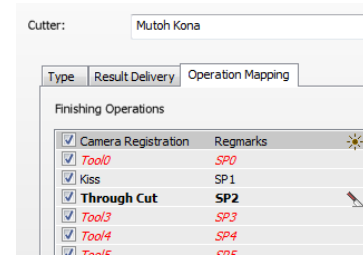
Options: `"\\systemname\inputMutoh" "plt(KONA.AL3)" 8 0.001 0.5 Fa`



- Click the "Operation Mapping" tab.
When there are 'Finishing Operations' enabled and missing (red italic), go to the next step.

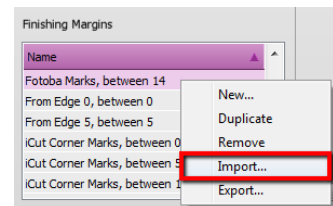
2. Import the Mutoh Kona Finishing Operations

- In the 'Finishing Hub', context click in the 'Finishing Operations' and choose 'Import'
- Locate the finishing operations in '`...\Asanti_4.0_CutterResources\Mutoh Kona\Finishing Operations`', select all operations and click 'Open'.
- Choose to 'overwrite' if the finishing operation already exists.
- Select the 'Mutoh Kona' cutter again and click the "Operation Mapping" tab. The finishing operations in Asanti now correspond with the tool names and colors used in the Mutoh CutServer. You can adjust them if needed.
- Go to the next step.



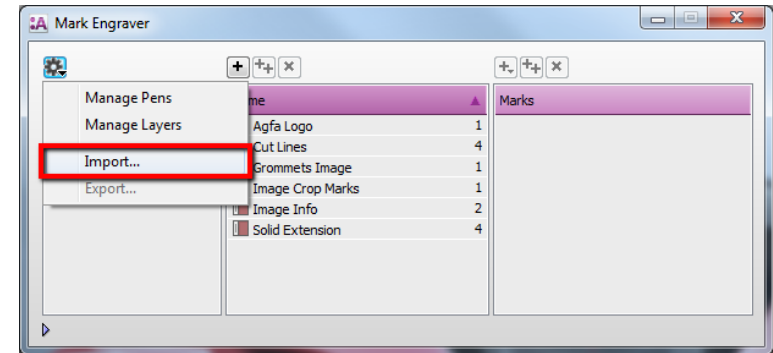
3. Import the Mutoh Kona Finishing Margins

- In the 'Finishing Hub', context click in the 'Finishing Margins' and choose 'Import'
- Locate the finishing margins in '`...\Asanti_4.0_CutterResources\Mutoh Kona\Finishing Margins`', select all margins and click 'Open'.
- Choose to 'overwrite' if the finishing margin already exists.
- Close the 'Finishing Hub'.

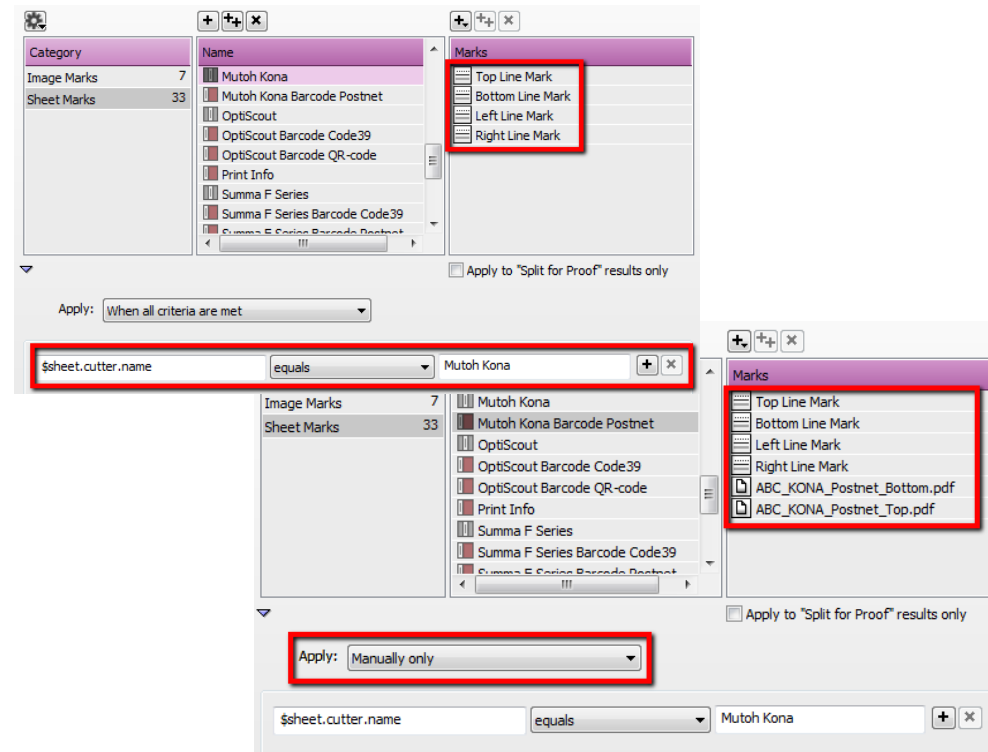


4. Import the Mutoh Kona Mark Sets


1. Open the 'System Overview, select the 'Impose' Task Processor and double click the 'Mark Engraver' Resource
2. Click the cog wheel to import the 'Mark Sets'
3. Locate the mark sets in '...\Asanti_4.0_CutterResources\Mutoh Kona\Mark Sets' and click 'Open'.
4. Choose to 'overwrite' if the mark set already exists



5. Click the 'Sheet Marks' category
 - a. The 'Mutoh Kona' Mark Set contains 4 registration lines to create a 'Bounding box' and will automatically be used when you select the Mutoh Kona cutter in your job.

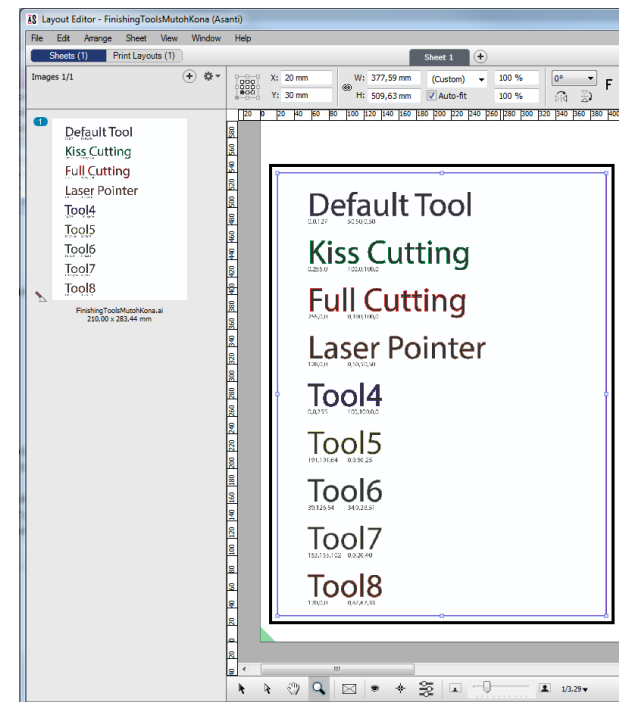
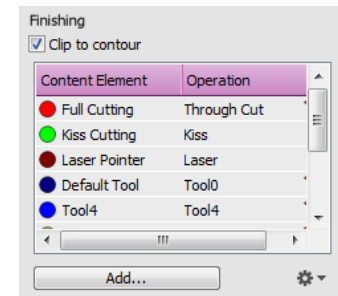
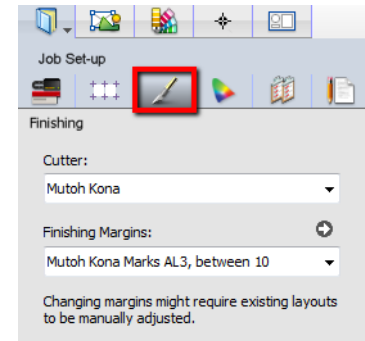


- b. The 'Mutoh Kona Barcode Postnet' contains next to the 4 registration lines also a barcode at the top and bottom. You can select it manually (instead of the default 'Mutoh Kona' Mark Set) or you can switch the conditions if you want use this Mark Set by default.

6. Unlock  the 'Mark Engraver' if you want to change the settings or conditions of these mark sets.
7. Close the 'Mark Engraver'.

5. Create a job

1. In the 'Jobs' window, select File menu > New Layout Job.
2. Open the 'Finishing Inspector'.
3. Select Cutter 'Mutoh Kona', select 'Finishing Margins' e.g. Mutoh Kona Marks AL3, between 10.
4. In the 'Images panel' click '+'.
 5. Locate the sample files in '...\Asanti_4.0_CutterResources\Mutoh Kona\Sample Files' and click 'Open'.
 6. Select the image in the 'Images panel'.
 7. Open the 'Image Inspector' (Alt+2)
 8. You can see that all spot colors (content element) in this sample file are automatically assigned to corresponding finishing operations e.g. Full Cutting is assigned to Through Cut. If this is not the case, context click a content element and choose 'Add' or 'Edit' to assign a spot color to the correct finishing operation.
9. Drag the image from the Images panel to the Sheet.
10. Verify if the Cutter Registration Marks are automatically placed.
11. Submit job, choose for Print files: 'Make and send to printer' and for Cut Files: 'Make and send to cutter'.

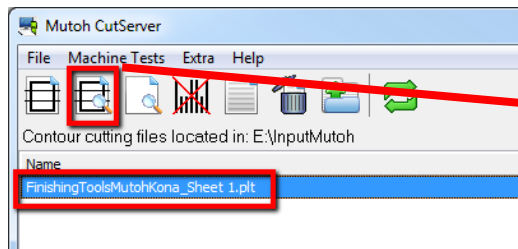


Import PLT file in Mutoh CutServer

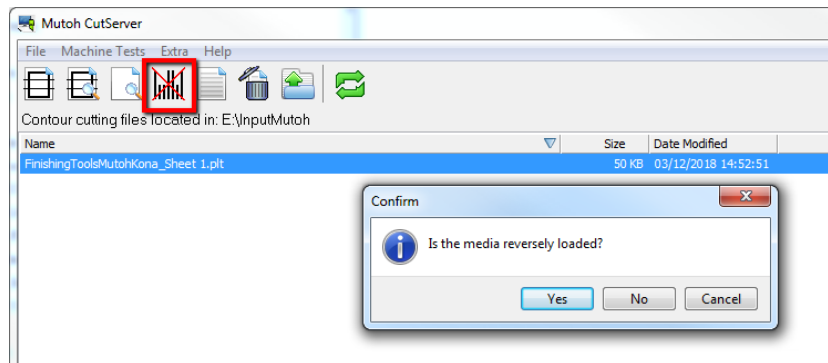
1. Start the Mutoh CutServer
2. To import a PLT file in the 'file list':
 - a. Browse to the export directory of Asanti
 “\SYSTEMCOMPUTER\FinishingRoot\SCUTTER” and drag the PLT file on the Mutoh CutServer
 - b. Setup a 'Directory' and browse to the export directory of Asanti (or the location specified in the 'Options' for the Post-process files).

Options: "\\systemname\inputMutoh" "plt(KONA.AL3)" 8 0.001 0.5 Fa

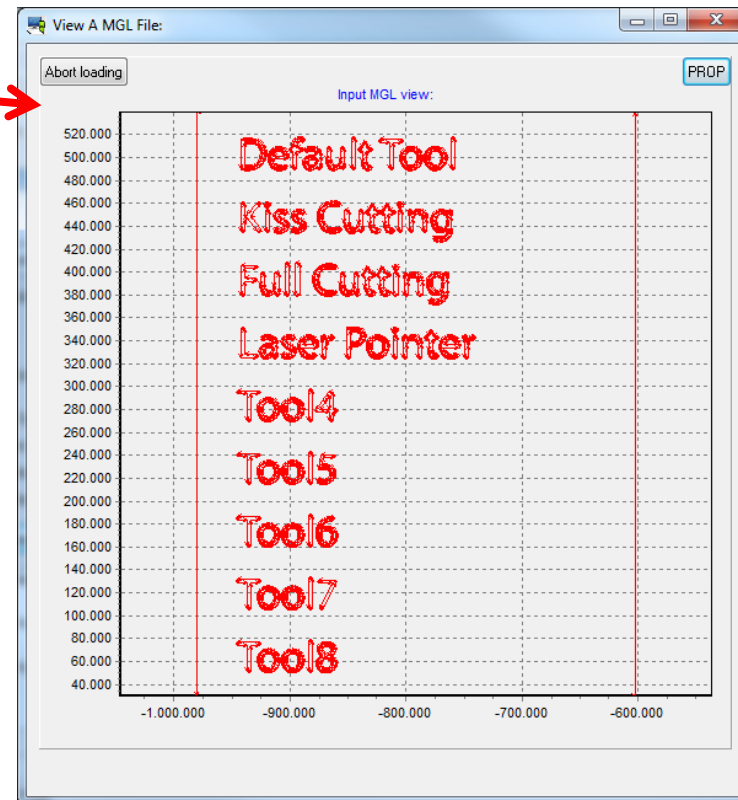
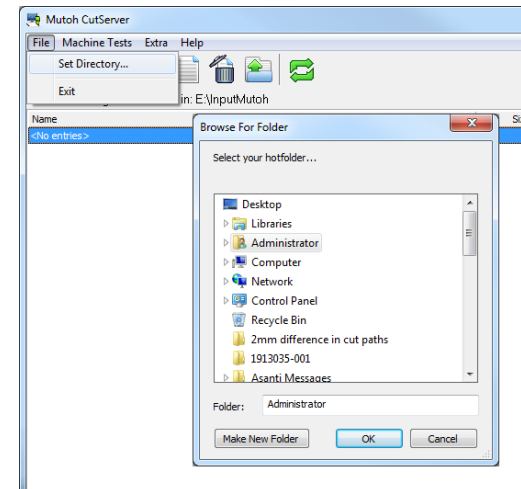
3. Select the PLT file in 'file list', choose to 'View/Clip the file' and you can see the cut paths in the 'Preview'.



4. Choose 'Send EPOS job' and confirm the media load direction (0° or 180° degrees rotated).



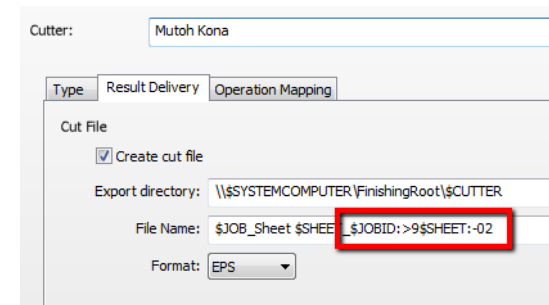
Mutoh CutServer File menu > Set Directory...



6. Using barcodes

Setup the Mutoh Kona Cutter for using barcodes

1. In the 'Finishing Hub' Resource (Ctrl+Alt+2), select the 'Mutoh Kona' cutter.
2. In the 'Result Delivery' tab, you have to add "`$_JOBID:>9$$SHEET:-02`" to the 'File Name' convention:
 - \$JOBID is a variable and will be replaced by a unique internal jobid, clipped at 9 characters.
 - \$\$SHEET is a variable and will be replaced by the number of the print layout, clipped at 2 characters.

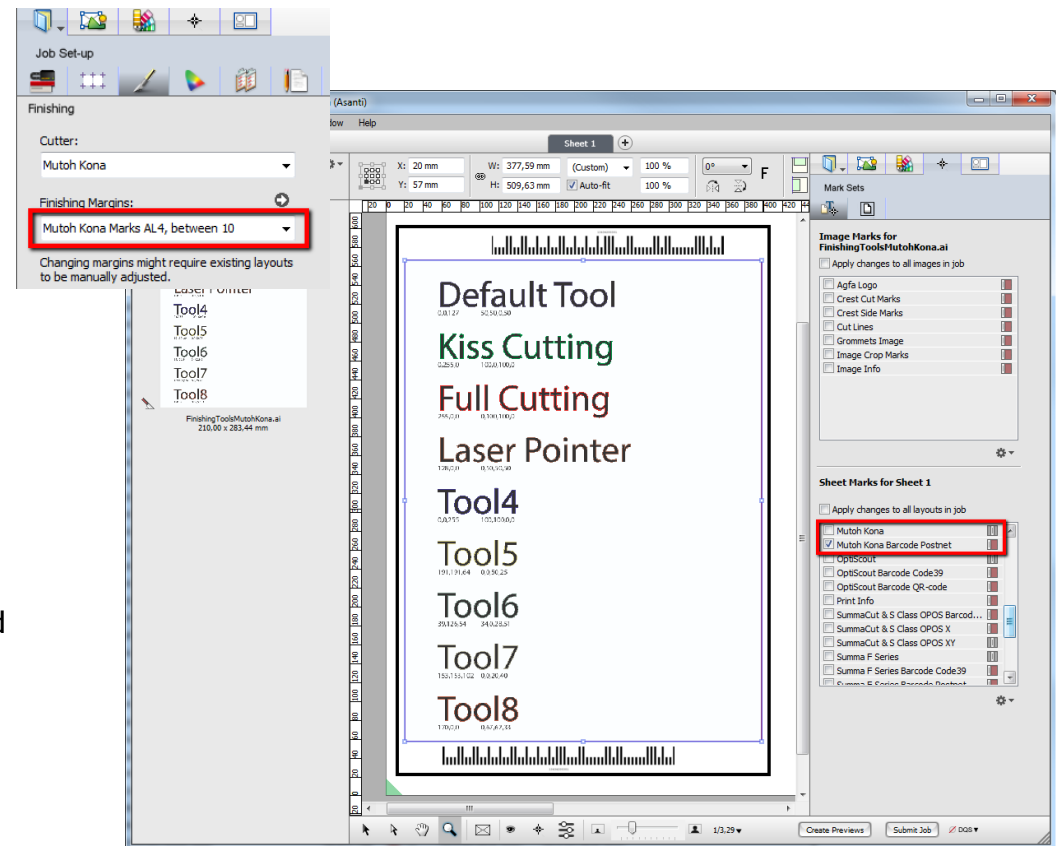


The build-in EPOS barcode scanners support up to 11 characters.

3. Close the 'Finishing Hub'

Create a job with a barcode Mark Set

4. In the 'Jobs' window, duplicate the job created before (see [4. Create a job](#)) but now:
 - Scale the image 170 %.
 - Select Finishing Margins "Mutoh Kona Marks AL4, between 10" in the Finishing Inspector'.
 - Select the 'Mutoh Kona Barcode Postnet' mark instead of the default 'Mutoh Kona' Mark Set in the 'Mark Sets Inspector'
5. Select the Sheet menu > Rearrange All Frames In Job (Ctrl+Alt+Shift+F) and you will see an extra space of 27 mm at the top/bottom between the image and 'Bounding box'. This extra space is needed to place the Postnet barcode.
6. Submit job, choose for Print files: 'Make and send to printer' and for Cut Files: 'Make and send to cutter'.



Import a PLT file with a barcode scanner

1. In Mutoh CutServer, make sure there is a connection to a Mutoh Kona cutter and that the PLT files with the barcode number are available in the 'file list'.
2. Click the 'Go' button, the Mutoh Kona cutter will start searching for the barcode and will send this data to the Mutoh CutServer (including information about the media load direction (0° or 180° degrees rotated)).



3. The Mutoh CutServer will search in the 'file list' for the PLT file with the correct number and automatically sends this file with the correct orientation to the Mutoh Kona cutter.

