

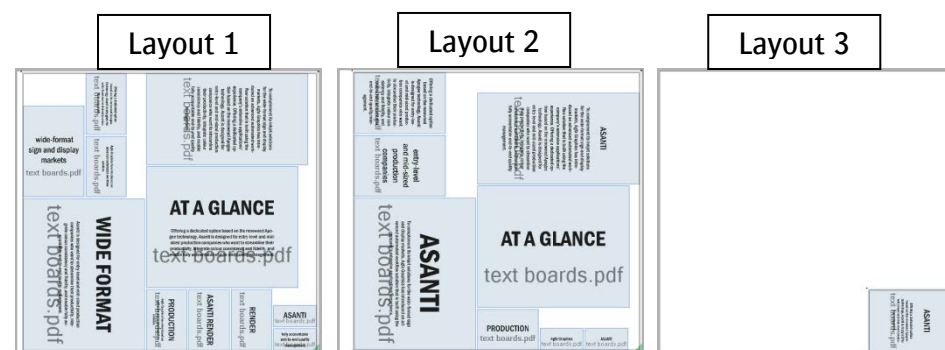
# Auto-Layout

This tutorial demonstrates how to auto-layout a job.

Sample files: \\[YOUR ASANTI SERVER]\Supportfiles\SampleFiles\Asanti  
also available on [AsantiNetwork](#)

## 1. Create a guillotine cut-able job

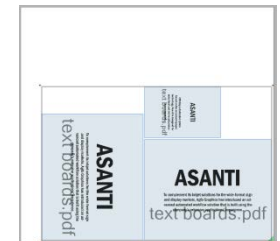
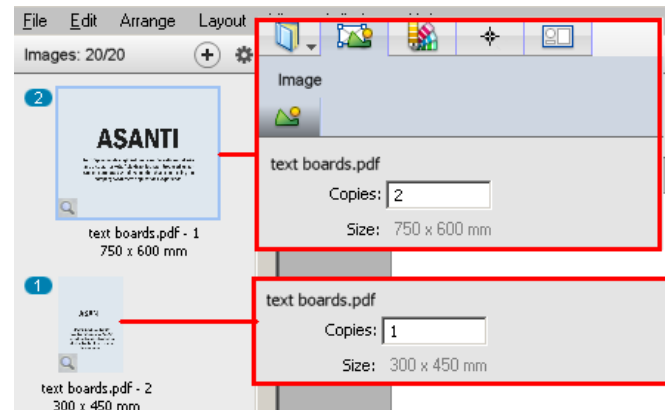
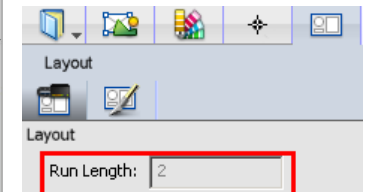
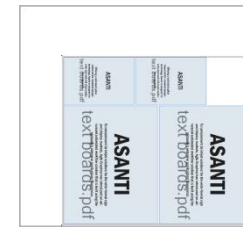
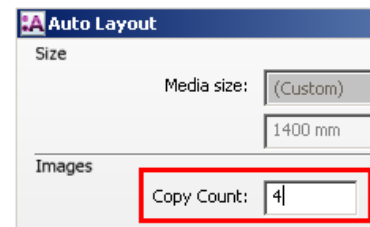
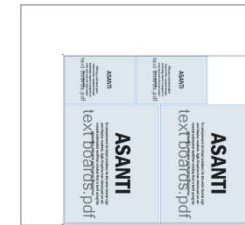
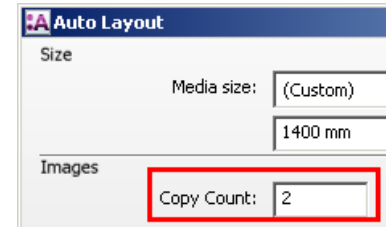
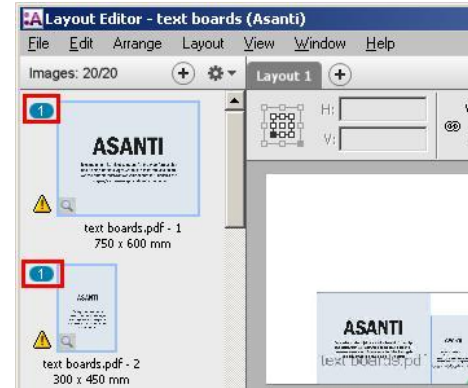
1. Select File > New Layout Job.
2. In the Image panel add the image: text boards.pdf
3. Select Layout > Auto-Layout Images (CTRL+N).
4. Choose these settings:
  - Media size 1500x1400mm
  - Copy count: 1
  - Layout type: Guillotine cuts
  - Rotation: Any angle
  - Optimize for: Minimal waste
  - Finishing margins: “iCut Corner Marks, between 10”
5. Click the button “Auto Layout 20 Image(s)”.
  - Each image is placed 1x.
  - All layouts can be cut with a guillotine cutter.
  - Guillotine cutting is the fastest auto-layout type.
6. Submit job, select Print Files: “Hold”.



NOTE: Placement of images on the layouts can be different from screenshots in this tutorial.

## 2. Use copy counts

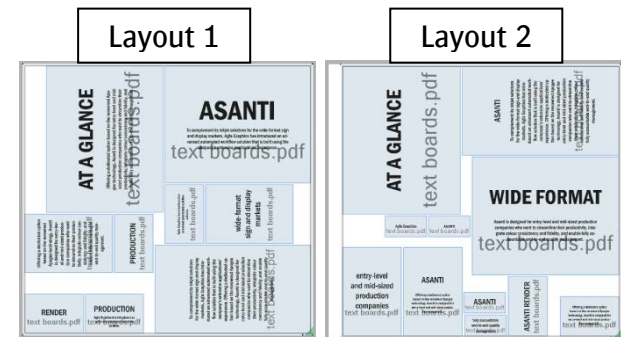
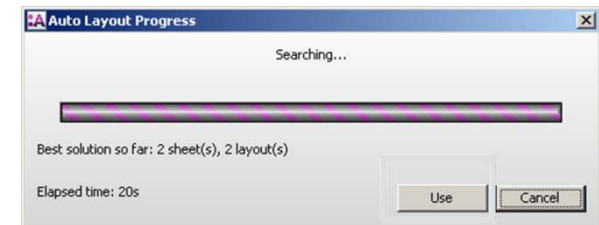
1. Select File > New Layout Job.
2. In the Image panel add the image: text boards.pdf.
3. Select images 1 and 2 in the Images panel.
4. Select Layout > Auto-Layout Images and choose the following settings: Media size 1500x1400mm; Finishing margins: "iCut Corner Marks, between 10".
5. Click the button "Auto Layout 2 Image(s)".  
Only the 2 selected images are placed.
6. Select images 1 and 2 in the Images panel.
7. Select Layout > Auto-Layout Images and set Copy Count to 2.
8. Click the button "Auto Layout 2 Image(s)".  
The selected images are placed 2 times on the sheet.
9. Select images 1 and 2 in the Images panel.
10. Select Layout > Auto-Layout Images and set Copy Count to 4.
11. Click the button "Auto Layout 2 Image(s)".  
The selected images are placed 2 times on the layout. The layout will be rendered once but must be printed 2 times on the digital press; this is visible in the Layout inspector.
12. Select image 1 in the Image panel.  
In the Image inspector set number of copies to 2.
13. Select image 2 in the Image panel. Set number of copies to 1.
14. Select images 1 and 2 in the Images panel.
15. Select Layout > Auto-Layout Images; the Copy Count field in the Auto-Layout window indicates "(mixed)".
16. Click the button "Auto Layout 2 Image(s)".  
Image1 is placed twice, image 2 once.



17. Submit job, select Print Files: “Hold”.

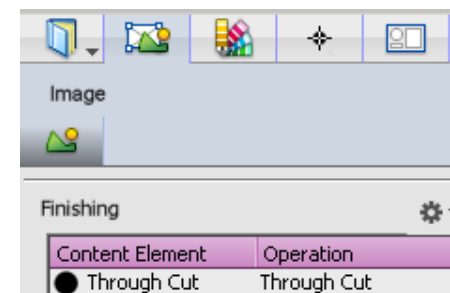
### 3. Create a Rectangular Nesting job

1. Select File > New Layout Job.
2. In the Image panel add the image: text boards.pdf.
3. Select Layout > Auto-Layout Images and use the following settings: media size 1500x1400, copy count 1, Layout type: Rectangular Nesting, finishing margins “iCut Corner Marks, between 10”.
4. Click the button “Auto Layout 2 Image(s)”. The progress dialog shows the details of the best solution found so far:
  - 2 sheets: number of sheets that will be printed on the Digital Printer.
  - 2 Layouts: number of layouts that will be created in the layout editor. Asanti searches for a better solution as long as you leave the progress window open.
5. Wait until the progress window indicates that the images fit on 2 sheets (e.g. after 30 seconds); click the “Use” button to accept and use the current best solution.
  - Each image is placed 1x.
  - Layouts can be cut with an x-y cutter but not with a guillotine cutter.
  - Rectangular Nesting could fit the images on 2 sheets while the Guillotine cuts layout type required 3 sheets.
  - Rectangular Nesting is slower than Guillotine cut auto-layout type.
  - Submit job, select Print Files: “Hold”.



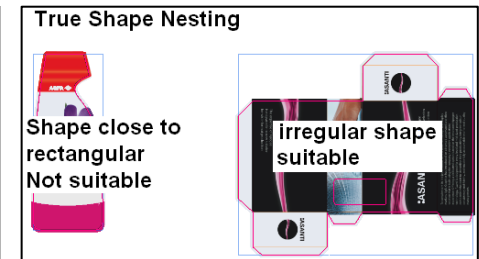
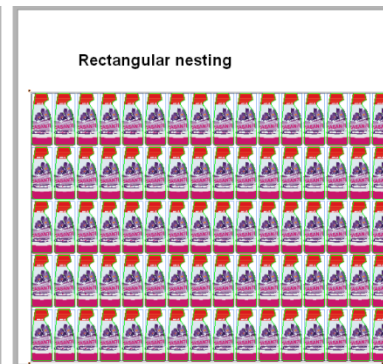
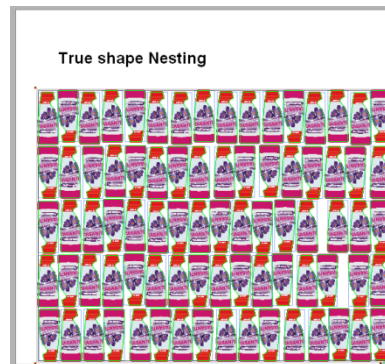
### 4. Create a True-Shape Nesting job

1. Select File > New Layout Job.
2. In the Image panel add the images: Asanti Box.pdf, Cleaning Product CMYKWhite.pdf.
3. In the Image panel, select Cleaning Product CMYKWhite.pdf.

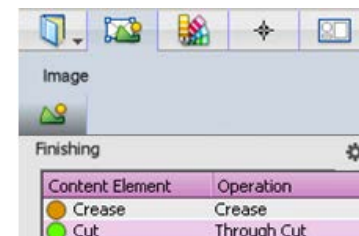


4. Select the Image inspector, the finishing settings show that spot "Through cut" is assigned to Finishing Operation "Through cut".
5. Select Layout > Auto-Layout Images.
6. Enter the following settings:
  - Media size 1500x1400mm
  - Copy count: 80
  - Layout type: True-Shape Nesting
  - Finishing margins: "iCut Corner Marks, between 10"
7. Click "Auto Layout 1 Image(s)". The images are nested using the Through Cut color path as shape.
8. Select Cleaning Product CMYKWhite.pdf in the Images panel.
9. Select Layout > Auto-Layout Images.
10. Choose Layout type: Rectangular Nesting.
11. Click "Auto Layout 1 Image(s)".

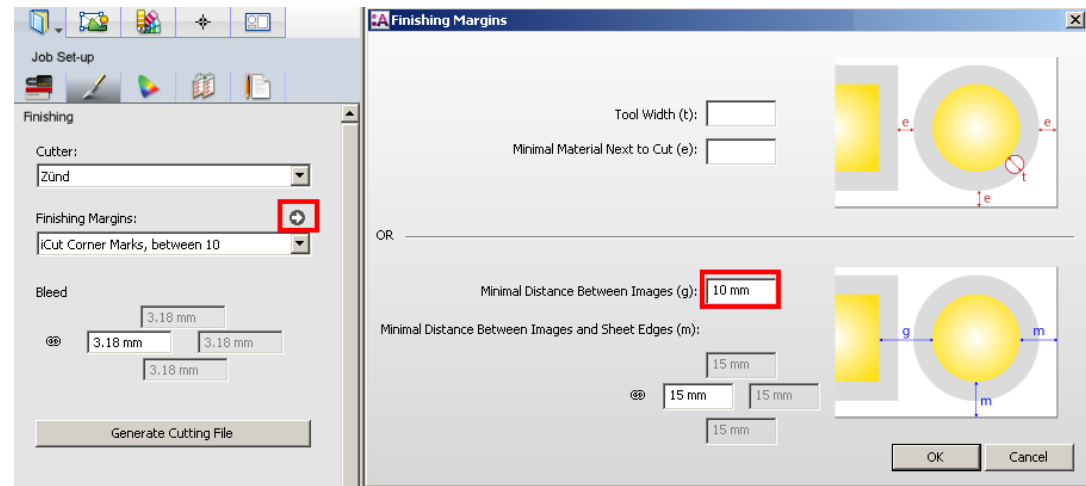
The Through Cut shape is close to rectangular. Because of this, the media usage is almost the same for True-shape nesting and Rectangular Nesting. On the other hand, Rectangular Nesting is much faster than True-Shape Nesting.



12. Select the Asanti Box.pdf image in the Images panel.
13. Select the Image inspector, the Finishing settings show that spot "Cut" is assigned to Finishing Operation "Through Cut".



14. Select Layout > Auto-Layout Images, set Copy Count to 20 and use Layout Type True-Shape Nesting.
15. Click "Auto Layout 1 Image(s)".  
The images are nested. The distance between the different Through Cut paths is minimum 10 mm. (Job Set-Up>Finishing inspector>Finishing margin>Minimal Distance Between Images).



16. Select Asanti Box.pdf in the Images panel.
17. Select Layout > Auto-Layout Images and choose Rectangular Nesting as Layout Type.  
Rectangular nesting produces faster results as True-Shape Nesting but the images are less optimally positioned.
18. Select Edit > Undo Auto-Fit to revert back to True-shape Nesting.  
Submit job, select Print Files: "Hold".

