

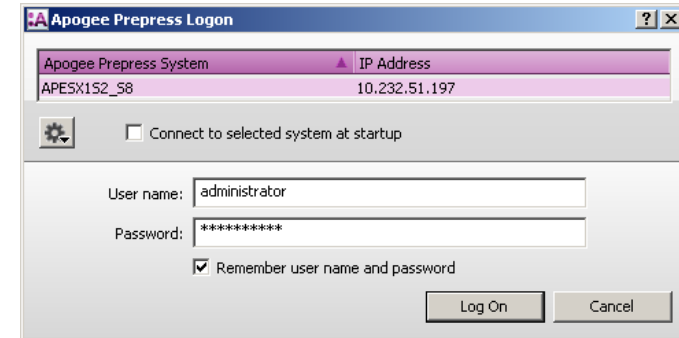
Creating-an-Asanti-Job

This tutorial demonstrates how to process a job in Asanti.

Sample files: \\[YOUR ASANTI SERVER]\Supportfiles\SampleFiles\Asanti
also available on [AsantiNetwork](#)

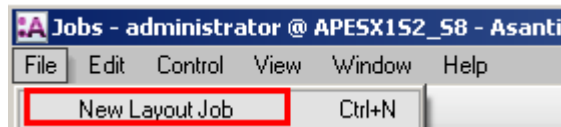
1. Starting the client

1. Double click the Asanti client short cut on the desktop.
2. Select the Asanti System.
3. Enable "Connect to selected system at startup".
4. Enter username and password to login. This is a windows user on the Asanti Server or a Windows network user that has access to the Asanti Server.
5. Enable "Remember user name and password"
6. Click "log on".

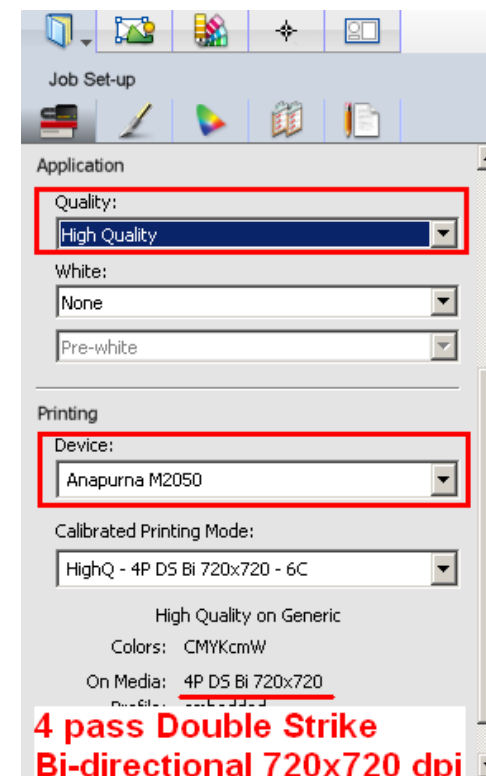


2. Creating a new job

1. In the jobs window, select File menu > New Layout Job.

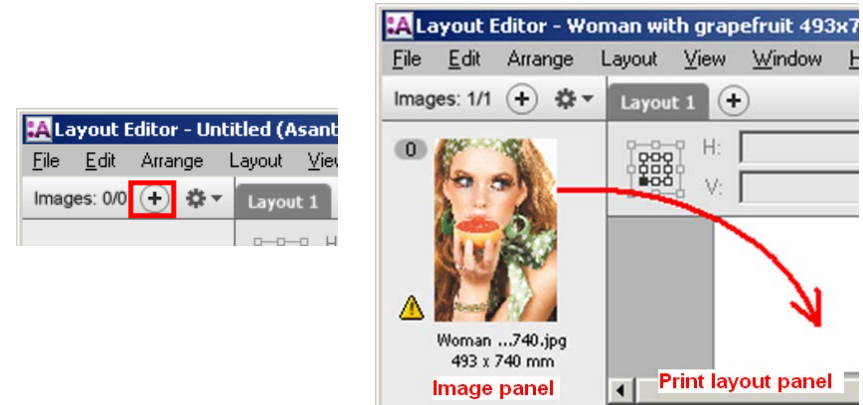


2. On the right side of the Layout Editor, the Inspector panel is shown.
3. In the Job Set-up > Media inspector, select "High Quality" from the Quality drop-down list in the Application section.
4. Select your output device.
At the bottom of the inspector the Printing mode is shown for the chosen quality (e.g. 4 Pass Double Strike Bi-directional 720x720 dpi).



3. Adding images

1. In the Images panel click "+" and browse for the "Woman with grapefruit 493x740.jpg" file. Select the file and click "Open".
2. When an image thumbnail becomes visible, drag the image from the Images panel to the Print Layout.
Depending on the selected device, the image is automatically placed on the bottom left or right side of the bed.



4. Submit job

1. In the right bottom of the Layout Editor click "Submit job".
2. Select Print Files: "Make and send to printer". This will render (rip) and output the sheet on your output device.
3. Click "Submit".
4. When the job is ready to be printed the jobs flow identifier and result shows a check mark.

