

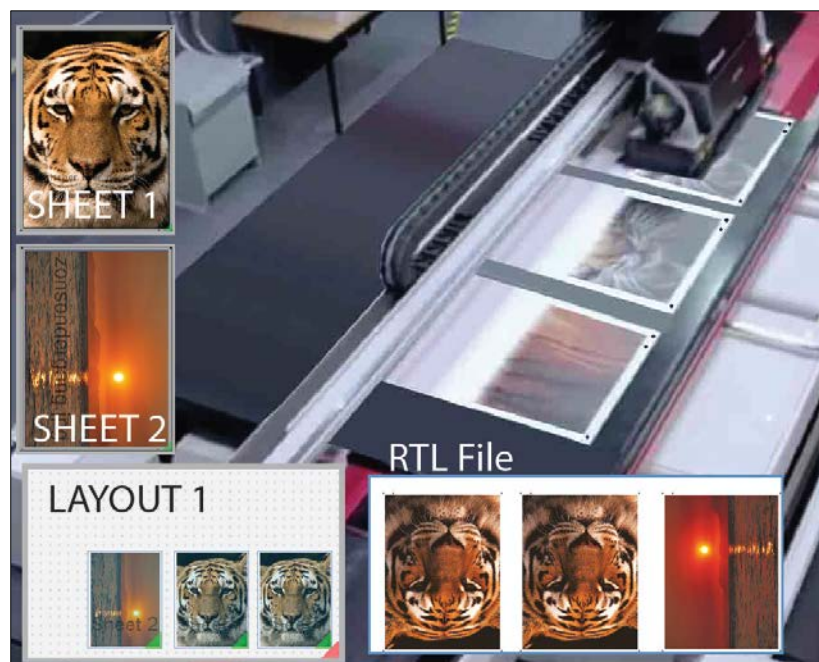
Printing multiple Sheets

This tutorial demonstrates how to work with multiple sheets to a printer. (Alignment Pin Sets are handled in a different Tutorial.)

Download the Asanti Sample Files via the Asanti Client (Help > Asanti Online > Download Sample Files).

True flatbed and hybrid printers allow users to place multiple sheets\boards next to each other on the printer bed to be printed in the same print run.

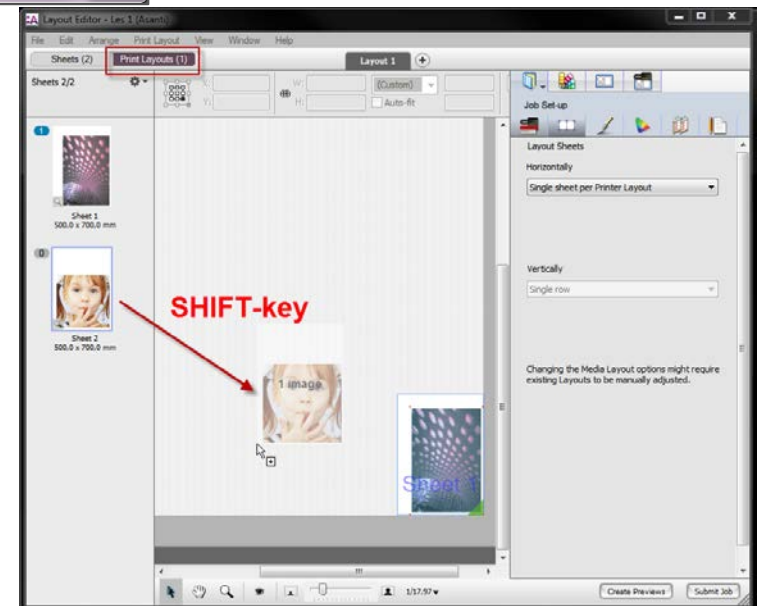
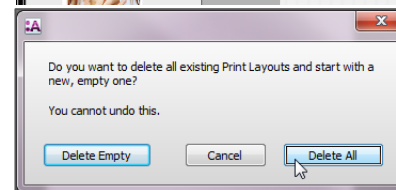
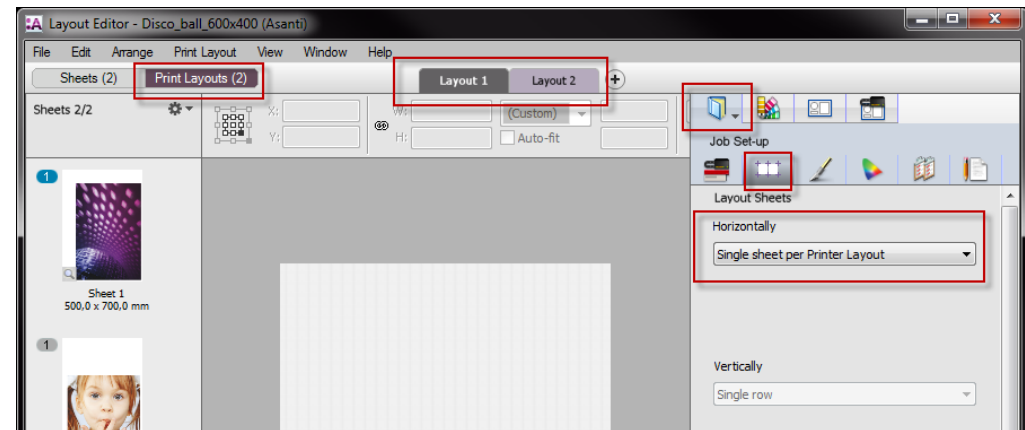
Each sheet will result in its own separate cut file. Sheets which were printed multiple times will only result in 1 cut file.



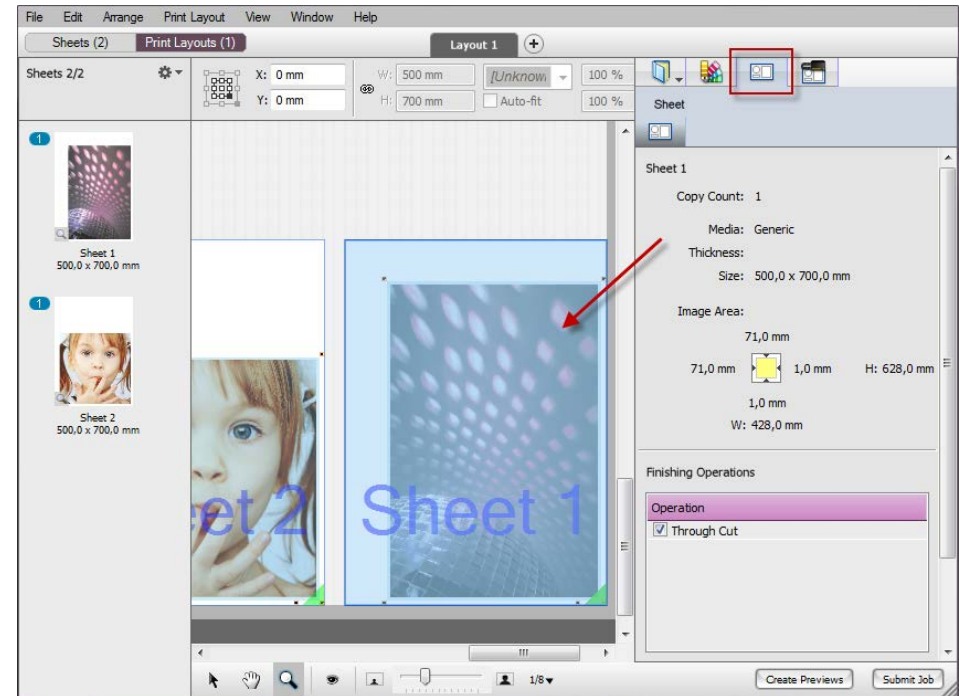
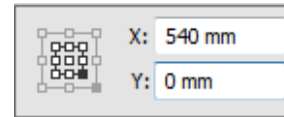
1. Single Sheet per Printer Layout – overrule the default

By default multiple sheets are handled by the Print Layout rule “Single sheet per Printer Layout”.

1. In the Jobs Window: File>New Layout job. F.i. to Anapurna 2050i.
2. Set the Sheet size to 500 x 700 mm.
3. In the Finishing Inspector: Select Zünd, and Finishing margins “Icut corner marks, between 5”.
4. Leave Bleed value at 3,18 mm.
5. Add the files “Disco_ball_600x400.pdf” and “pancakes.pdf”.
6. Drag the Disco ball on the sheet while clicking the SPACE bar to rotate it 90 degrees.
7. Scale the Pancakes file 65% and drag to sheet to create sheet 2.
8. In the Sheet View you now see 2 Sheet tabs.
9. Go to the Print Layouts pane by clicking on the Print Layouts tab: You see 2 sheets in the Sheet panel at the left hand side. The Layout Panel has 2 tabs which represent the 2 Layouts.
10. Go to the Layout Sheets Inspector under Job Setup. The Sheets were placed automatically on 2 Print Layouts because of the default rule: “Single Sheet per Printer Layout”. This rule is set by default in the Media Layout Inspector.
11. You can overrule this behavior manually: From the menu Print Layout>Delete Print Layouts...
12. Select “Delete All”.
One empty Layout is always kept.
13. Now drag Sheet 1 on the Layout. It will be snapped to the 0-point.
14. Drag Sheets 2 while holding the SHIFT button to place it on the Layout. The Layout now contains both sheets.



15. Select Sheet 2 and give in X: 540 mm and Y: 0 mm to align the sheet next to Sheet 1. Both pages are now neatly next to each other.
16. Select sheet 1 on the Layout and select the Sheet Inspector. It displays the properties of each sheet. E.g. The margins between the image area and the sheet edges.



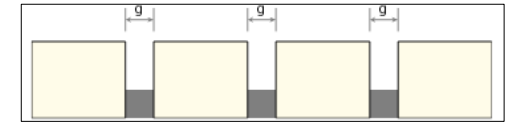
In the Sheet Inspector a yellow sheet icon is a non-borderless Sheet; a pink sheet icon is a borderless printed Sheet.

17. Submit the job, Print Files: Make and hold; Cut Files: Make and send to cutter.
18. Verify on your server\FinishingRoot\Zünd whether 2 separate cut files were exported.

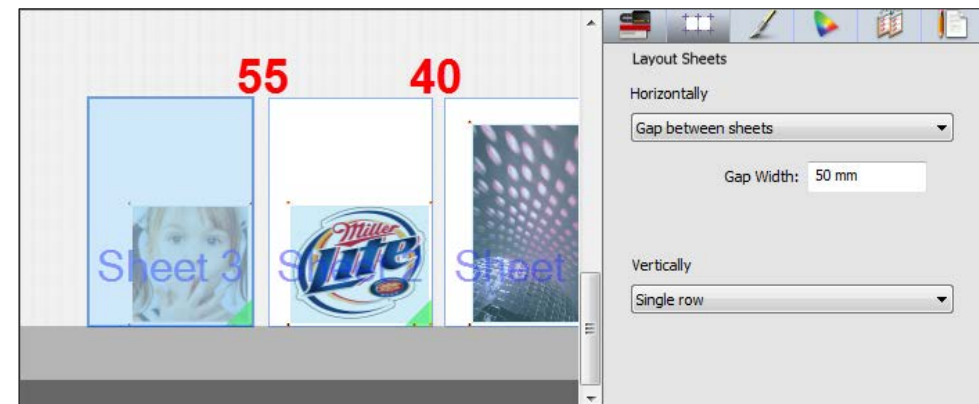
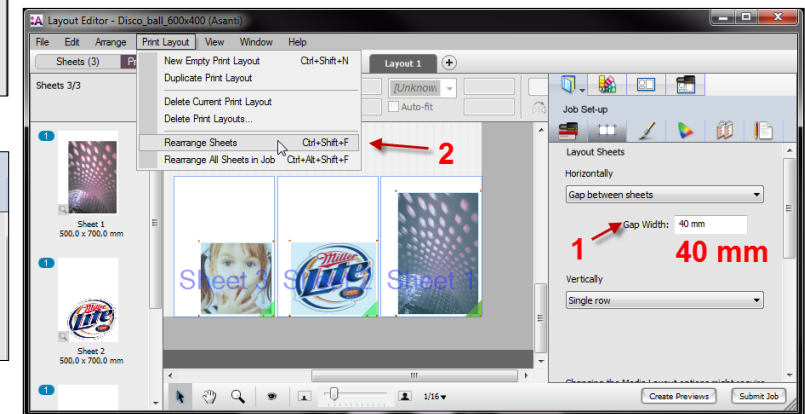
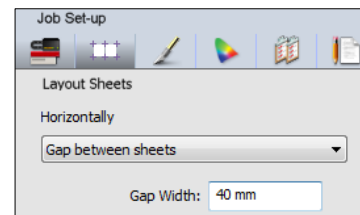
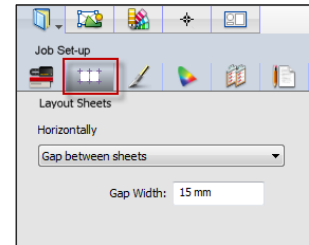
In the Print Layout Mode "View>Print Layout Editor Orientation" allows you to view the Layout with the Setbar at the top, at the bottom or as on printer. When viewed "as on printer": for the Anapurna the set bar will be at the bottom; the set bar will be at the top for Tauro because you feed the media at the back.

2. Gap between sheets

Asanti can place the sheets with a set gap between them. The first sheet is always placed at the zero point of the printer bed. The next sheets will be placed by honoring a gap distance between the sheets.

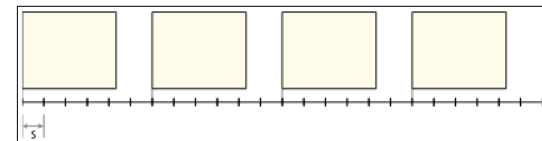


1. In the Jobs Window: File>New Layout job. (Here Anapurna was used, Jeti's will align the sheets on the other side.)
2. Job Setup>Media, set the sheet size to 500 x 700 mm.
3. In the Finishing Inspector: Select Zünd, and Finishing margins "Icut corner marks, between 5".
4. Leave Bleed to 3,18 mm.
5. In the Layout Sheets Inspector: Set the Layout Sheets: Horizontally to "Gap between Sheets", gap width 15 mm.
6. Add the files "Disco_ball_600x400.pdf", "Miller Lite Logo.jpg" and "pancakes.pdf" to the Images panel.
7. Scale the Miller and Pancakes files 50%. Place the images on the sheet, use SPACE bar for the Disco_ball file; to get 3 sheets.
8. Open the Print Layout View.
9. The sheets are ganged automatically with the set gap.
10. In the Layout Sheets Inspector: Change the gap to 40 mm. (15 mm might be too narrow).
11. Print Layout>Rearrange Sheets (while you have no sheets selected!). The sheets are **all** realigned to the new gap.
12. Change the gap to 55mm.
13. Select only the most left sheet. (For Jeti: the most right.)
14. Print Layout>Rearrange Sheets. Now only the selected sheet was rearranged.
15. Submit the job, Print files: Make and hold. Hold the cut files.
16. The Media Layout settings will be saved in the job preset and used in the next job to this printer.

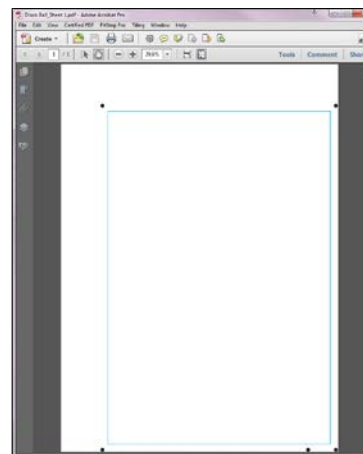
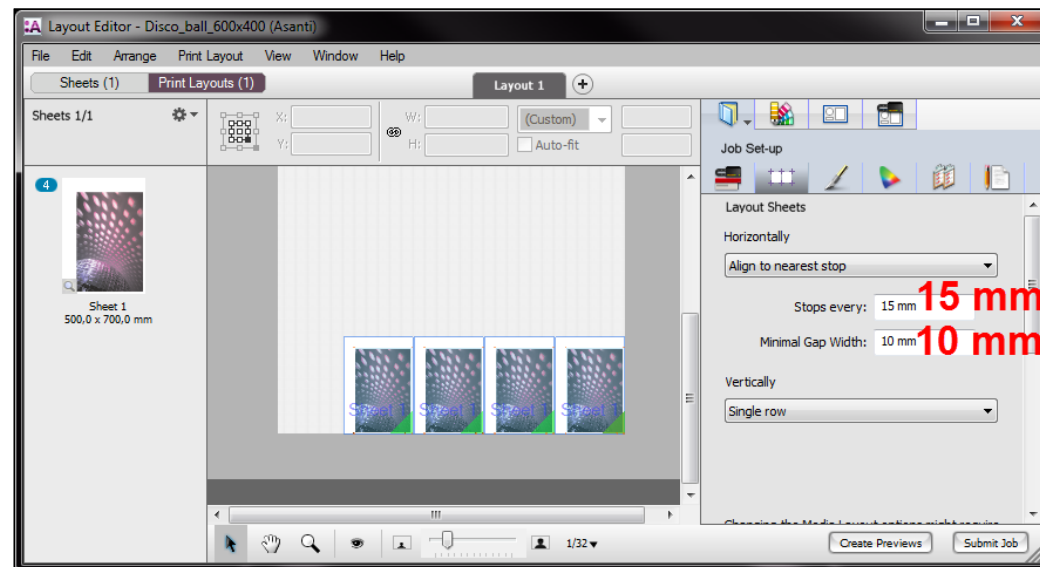


3. Align to nearest stop – only 1 cut file for multiple sheets

This ganging mechanism places the edges of the sheets aligned with evenly spread ticks on the ruler or other marks on the printer's bed. The minimal gap compensates for variations in media dimensions, and it guarantees a gap for bleed when printing borderless.



1. In the Jobs Window: File>New Layout job (here Anapurna).
2. Select the Zünd as Cutter and set "icut corner marks, between 5" as Margins.
3. Set the Sheet size to 500 x 700 mm.
4. Set the Layout Sheets to "Align to nearest stop", every 15 mm Minimum gap 10 mm.
5. Add the "Disco_ball_600x400.jpg" file to the Images panel.
6. Drag it on the sheet; use the SPACE bar to rotate.
7. Go to the Print Layout: the sheet was placed on the Print Layout.
8. Select the Sheet on the Print Layout: Edit>Duplicate Sheet on Printer Layout: Additional copies 3.
9. Submit and send the cut file to the cutter.
10. Go to the FinishingRoot. Open the cut file in Acrobat. Only 1 cut file is exported for sheet 1.



4. Known issues and limitations

- Only 1 Sheet size per job is supported.
- APR-68570: Alignment Pin Set Resource should not be shared among all Large Format Printers. Most have different sizes and some have a different 0-point.
- APR-69024: Rearrange all Sheets on Job only works on 1 Layout or when going from 1 Layout to multiple Layouts. When the new Layout rule results in less Layouts, the user will have to manually delete all Layouts first and then rearrange sheets.
- Apr-69045: roll media: Layout Sheets settings grayed out in Layout mode.
- APR-68921: When you change the Print Layout ganging rule for the current job, the initially placed sheet will already have been positioned according to the initial rule. You will always need to apply Print Layout>Rearrange All Sheets in Job. – This behavior will not be changed.