


Working with Bleed

This tutorial handles the different ways to work with Bleed in Asanti. Bleed is the part of the image which is meant to be cut off to obtain a printed result filled with image from edge to edge (no white borders).

When you need the bleed to fold the image over a frame f.i. you do not cut it off. This is handled in the “Canvas Wrapping” Tutorial.

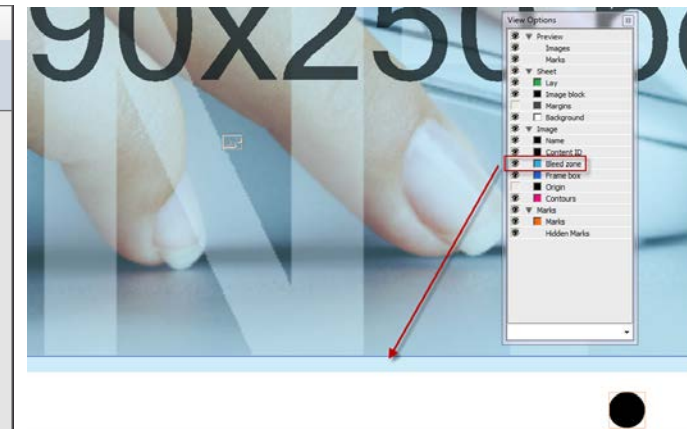
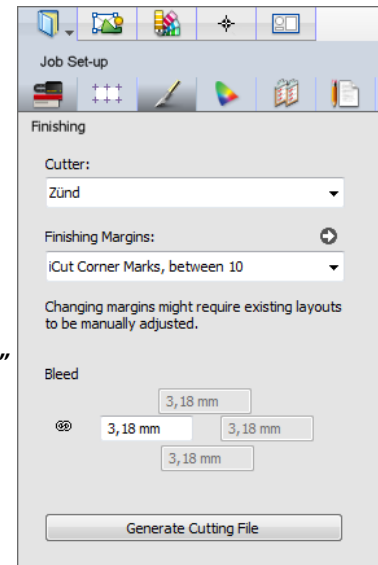
Download the Asanti Sample Files via the Asanti Client (Help >Asanti Online > Download Sample Files).

1. Bleed setting in a Layout job – image has bleed

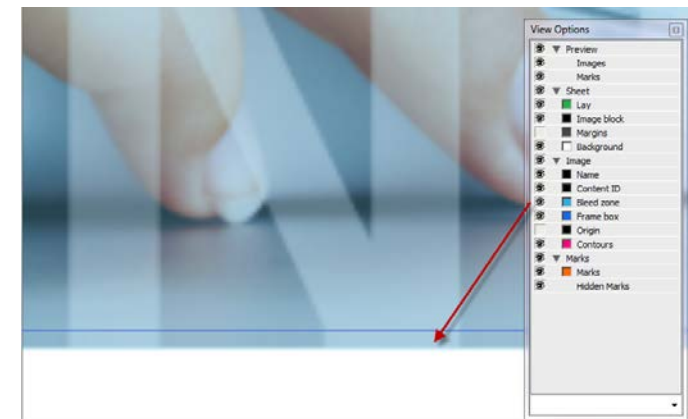
1. File>New Layout.
2. Go to the Job Set-up>Preflight Inspector and make sure the “Asanti Fixes” parameter Set is selected.
3. Add the “ASANTI Visual 390x250.pdf” file to the Images panel.
4. Go to the Job Set-up>Finishing Inspector to verify the job’s Bleed settings. By default this is 3,18 mm.
5. Set the Zund as cutter and set “iCut Corner Marks, between 10” as Finishing margins.
6. Place the image on the sheet.
7. Open the View Options palette. Check the Bleed Zone. 
8. Zoom in to verify the bleed. You do not see any bleed because the Preview of the image was not created yet.
9. Click the “Create Previews” button in the right bottom corner.
10. The bleed appears on the Sheet.

The image only has 3 mm bleed so 0,18 mm of the bleed zone will not show bleed. This can be seen when you zoom in on the bleed margin at the bottom of the image.

11. Submit the job, Make and hold. Hold the cut file.

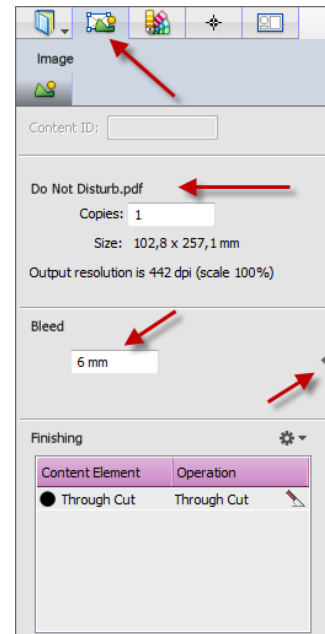


Create Previews



2. Bleed setting of 1 image in a Layout job

1. File>New Layout.
2. Go to the Job Set-up>Finishing Inspector: set Zund as cutter and set "iCut Corner Marks, between 10" as Finishing margins. Set 4 mm job Bleed.
3. Add the "ASANTI Visual 390x250.pdf" file and the "Do not disturb.pdf" file.
4. Place both images on the sheet.
5. Open the View Options palette. Check the Bleed Zone in the View Options Palette.
6. Create the Previews.
7. Both images have 4 mm bleed zone. (Although less image bleed from the file).
8. Select the "Do not disturb.pdf" file in the Images panel and go to the Job Set-up>Image Inspector.
9. In the Image Inspector change the Bleed to 6 mm for this file. Press enter to apply the setting.
10. You see on the sheet that the bleed zone immediately enlarges for the "Do not disturb.pdf" file. Not for the ASANTI Visual file.



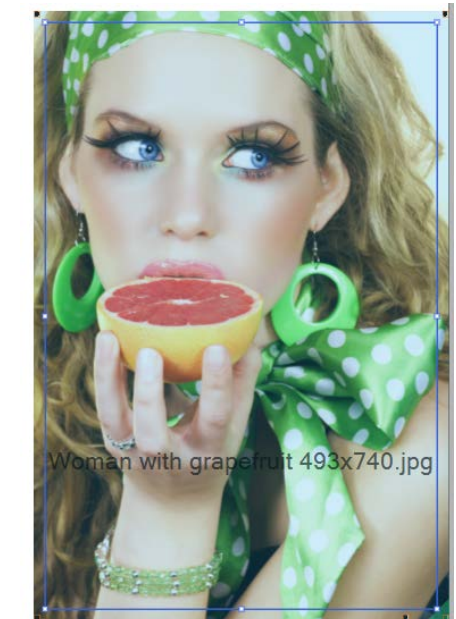
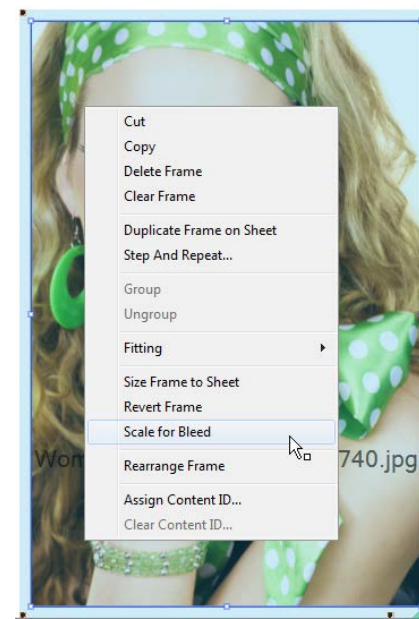
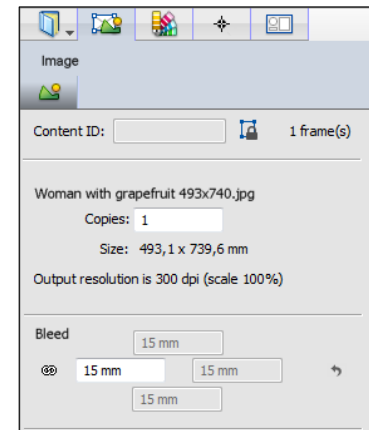
The arrow next to the Image Bleed in the Image Inspector can be used to reset the Image Bleed to the Job Bleed.

The job Bleed is saved in the job preset and will be used for the next job.

11. Close the Layout Editor and select to Delete the Job.

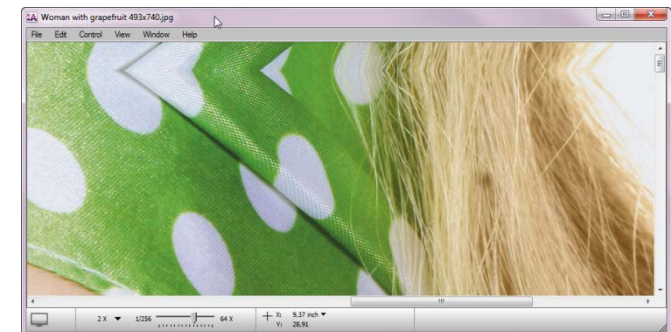
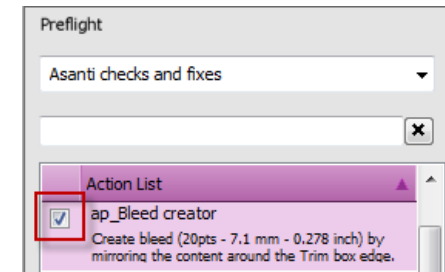
3. Creating Bleed by enlarging the image – image has no bleed

1. File > New Layout job.
2. Go to the Job Set-up>Preflight Inspector and select the “Asanti Fixes” parameter Set.
3. In the Job Set-up>Finishing Inspector set Zund as cutter and set “iCut Corner Marks, between 10” as Finishing margins.
4. Add the “Woman with grapefruit 493x740.jpg” file.
5. Place the image on the sheet.
6. Select the image on the sheet and go to the Job Set-up>Image Inspector: Set the Image Bleed to 15 mm.
7. Create Previews. => The image does not have any bleed.
8. Context-click the image on the sheet and select “Scale for Bleed”.
9. The Frame size stayed the same but the image was scaled automatically to fill the 15mm bleed set in the image Inspector.
10. Close the Layout Editor and select to Delete the Job.



4. Using a Preflight Action Lists in a job to create bleed

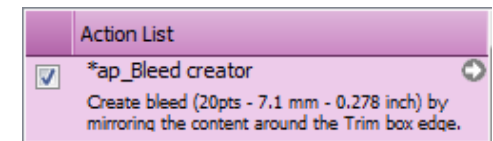
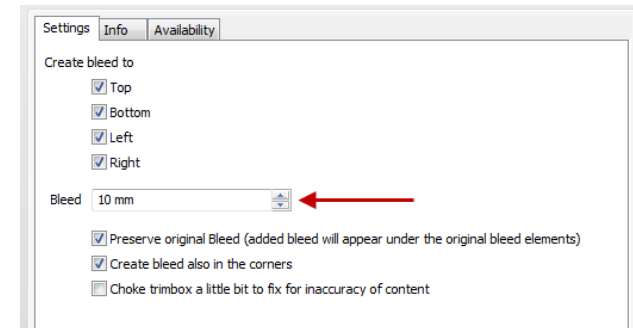
1. File > New Layout job.
2. Add the "Woman with grapefruit 493x740.jpg" file.
3. In the Job Set-up>Preflight Inspector; make sure the "Asanti Checks and Fixes" parameter Set is selected.
4. In the Job Set-up>Preflight Inspector; select an extra action list: "ap_Bleed Creator".
1. Click "Apply Changes" and notice that the warning icon next to image will disappear after processing.
2. The warning is gone. There is no Snag List icon any more.
3. The Preflight action list created 7,06 mm bleed by mirroring the image around its trim box edges. The trim box was kept, but the bleed box was enlarged.
4. Double click the image to open the Preview and zoom in on the top edge of the image. You see that the image was mirrored to create bleed.
5. Place the image on the sheet. Only the 3,18 mm Job bleed is displayed and printed around the image.
6. Close the Layout Editor and select to Delete the Job.



Keep in mind that all settings located within the job set-up inspector are saved in the job preset (including the Preflight settings). The next job will use these settings.

5. Editing an Action List in a job to create desired bleed (Asanti 2.0)

7. File > New Layout job.
8. Add the Sample File “Woman with grapefruit 493x740.jpg” to the Image Panel.
9. In the Job Set-up>Preflight Inspector: check the check box next to the “ap_Bleed Creator” action list.
10. Click the gray arrow next to the “ap_Bleed Creator” action list on the right hand side. This will open the Bleed Creator Action List settings.
11. Enter a new value: 10 mm. The units can be changed by context-click.
12. Click OK to close the action list editor. The action list is now changed, but only for this job. The resource on the system is unaltered.
Notice that there appears an asterisk next to the action list name to indicate that the action list was changed for this job.



If you want to restore the default settings: Context-click the action list and select Reset.

13. Click “Apply Changes”.
14. Open the Preview by double clicking the image in the image panel to check the Bleed.
15. Close the Preview and place the image on the sheet. Zoom in and notice that the bleed is not as wide as in the Preview. The bleed will not be shown when you have not created a Preview (the image in the Image Panel needs to have a grey magnifying glass which indicates that a Preview is available).
16. Change the bleed for this image: select the image and in the Job Set-up>Image inspector: change the bleed value to 10 mm.
17. Close the Layout Editor and select to Delete the Job.

