

This tutorial demonstrates how to work with the Media Hub.

1. Access the Media Hub

You can open the Media Hub as following.

From the Job list:

1. Context-click on your printer in the devices pane next to the jobs.
2. Select "Media Hub".

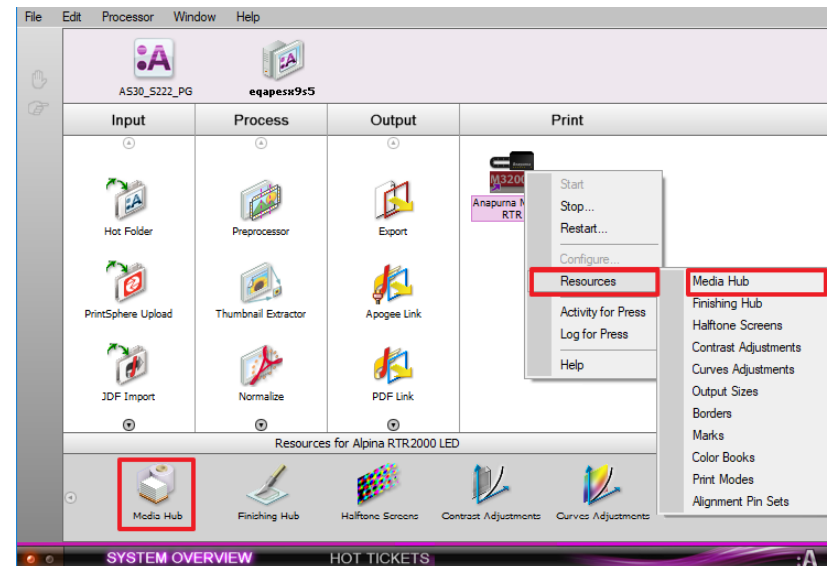
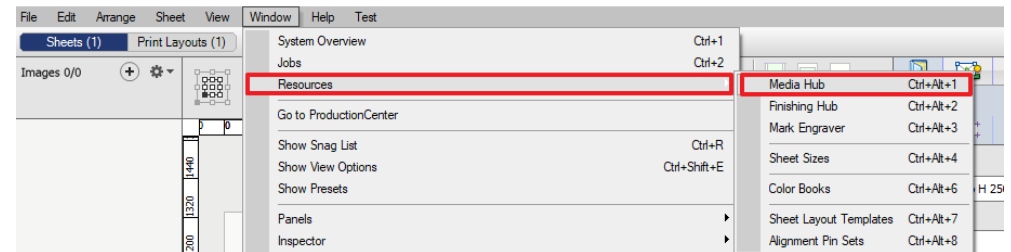
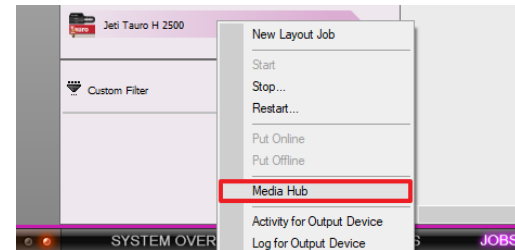
From the Layout Editor:

1. Select Window > Resources > Media Hub.
Or use the shortcut Ctrl+Alt+1

From the System Overview:

1. Context-click on your printer in Print pane.
2. click Resources and select "Media Hub" from the dropdown menu.

Or double click on the Media Hub icon in the resources pane.



2. Overview

The screenshot displays the Media Hub application interface. On the left, there are panels for 'Qualities' (with 'Asanti Quality' selected) and 'Printers' (with 'Jeti Titan HS' selected). The central area shows a list of 'Calibrated Printing Modes' with columns for 'Printer' and 'Calibrated Printing Mode'. The right side features a 'Calibrated Printing Mode' details panel for 'HighQ - 8P Bi 630x1200 - 6C', including 'Used for', 'Inks', 'Colors', 'Created', and 'Creator' information. Below this are sections for 'Color On Media', 'Color On White', 'White', and 'Varnish' settings, each with 'Print mode', 'Profile', and 'PST/TAC' details. A search bar is located at the top of the central panel.

Printers

- All Printers
- Anapurna M2500i
- Anapurna M2540 FB
- Generic SD
- Jeti Mira MG 2732 HS
- Jeti Tauro H 2500
- Jeti Titan HS**
- Mimaki JV5
- Mimaki JV33
- Mimaki JV150
- Mimaki JV300
- Mimaki JV400LX
- Mimaki JV400SUJ

Media

- All Media
- Cardboard
- Foam Board
- Generic
- Paper
- Synthetic Board
- Synthetic Substrates
- Textile
- Media Category
- Media
- Coated Paper
- Generic
- Acrylic
- Aluminium Composites
- Canvas Banner
- Corrugated Board
- Display
- Display Board
- Extruded Polystyrene
- Flag
- Fluted Polypropylene
- Foamed Polystyrene
- Foamed PVC
- Folding Box Board
- Mesh Banner
- PMMA
- Polycarbonate
- Polyester
- Polyethylene
- Polypropylene
- Polystyrene
- PVC
- PVC Banner
- Rigid PVC
- Self Adhesive
- Static Cling
- Synaps
- Uncoated Paper

Calibrated Printing Modes (CPM)

Printer	Calibrated Printing Mode
Jeti Titan HS	Expr - 2P Bi 540x1200 - 6C
Jeti Titan HS	HighD - 10P Bi 720x1200 - 6C
Jeti Titan HS	HighQ - 8P Bi 630x1200 - 6C
Jeti Titan HS	Prod - 4P Bi 540x1200 - 6C
Jeti Titan HS	Std - 6P Bi 540x1200 - 6C
Jeti Titan HS	Custom - 8P Bi 630x1200 - 6C M0
Jeti Titan HS	Custom - 8P Bi 630x1200 - 6C M1

Calibrated Printing Mode Details: HighQ - 8P Bi 630x1200 - 6C

- Name: HighQ - 8P Bi 630x1200 - 6C
- Used for: High Quality on Jeti Titan HS on Generic
- Inks: CMYKcm+WW (UV - Jeti Anuvia HDC + Anapurna White G3 + Jeti Varnish)
- Colors: CMYKcm
- Created: 03/02/15 15:59:22
- Creator: Agfa Certified

Color On Media

- Print mode: 8P Bi 630x1200
- Profile: embedded
- PST/TAC: WF-LightGCR / 300%
- Calibrated: 03/02/15 15:59:21

Color On White

- Print mode: 10P Bi 630x1200
- Profile: embedded
- PST/TAC: WF-LightGCR / 300%
- Calibrated: 03/02/15 15:59:22

White

- Print mode: 10P Bi 630x1200
- 100% Ink Limit: 100%

Varnish

- Print mode: 8P Bi 630x1200
- 100% Ink Limit: 100%

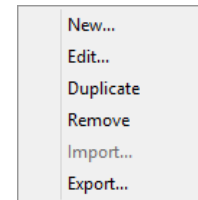
Click the lock to make changes

3. Managing Calibrated Printing Modes

A Calibrated Printing Mode is a bundle of various resources (profile, calibration ...). The Media Hub is able to export/import the Calibrated Printing Modes as one single file containing all these different resources.

Exporting CPMs

1. Open the Media Hub.
2. Select a CPM from the Tutorial media. Context click the CPM and select Export.
1. During exporting a status dialog will display the list of resources which are included in the CPM.



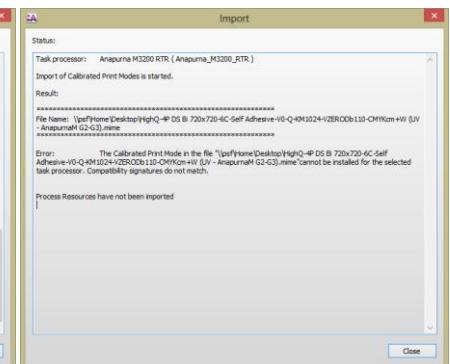
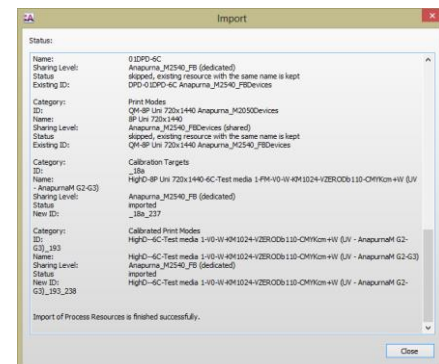
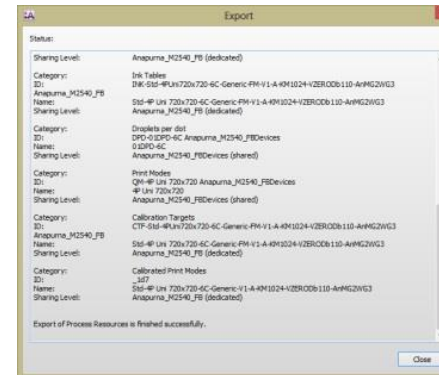
New... might be greyed out. This is the case when the selected CPM uses shared calibrations with another media type.

Exchange of CPMs between printers

The CPMs can now be used for another printer or even a different Asanti server. Not all CPMs may be imported again to any type of printer. It's obvious that Jeti and Anapurna resources may not be exchanged between each other but also Anapurna M1600 (4C) resources are not compatible with an Anapurna M2500 (6C). A warning will be posted when you try to import a CPM which is not compatible (it will not be possible to proceed the import).

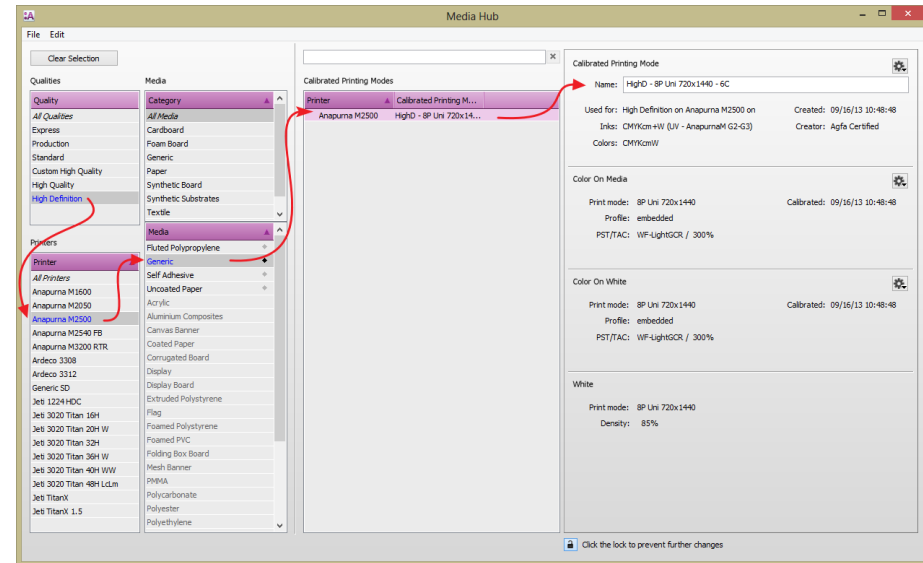
Importing CPMs

1. Open the Media Hub.
2. Select a printer and context click in the Calibrated Printing Mode pane and select "Import".
3. Locate the CPM on disk and click "Open".
4. A status window will display all imported resources. The status window will also display if a CPM isn't compatible (compatibility signatures do not match).



4. Selecting and filtering CPM's

1. Select the High Definition quality.
The Media Hub displays all available CPMs for the selected quality. Notice the update info in the right pane.
2. Select a printer.
3. Select the Generic media type.
4. The Media Hub will now display 1 available High Definition CPM.
5. Select the available Calibrated Printing Mode and notice all details in the right pane.
6. Click Clear Selection to remove the actual filtering.



The Media Hub uses a color encoding to guide you to the correct CPM.

Blue: CPM available for active selection.

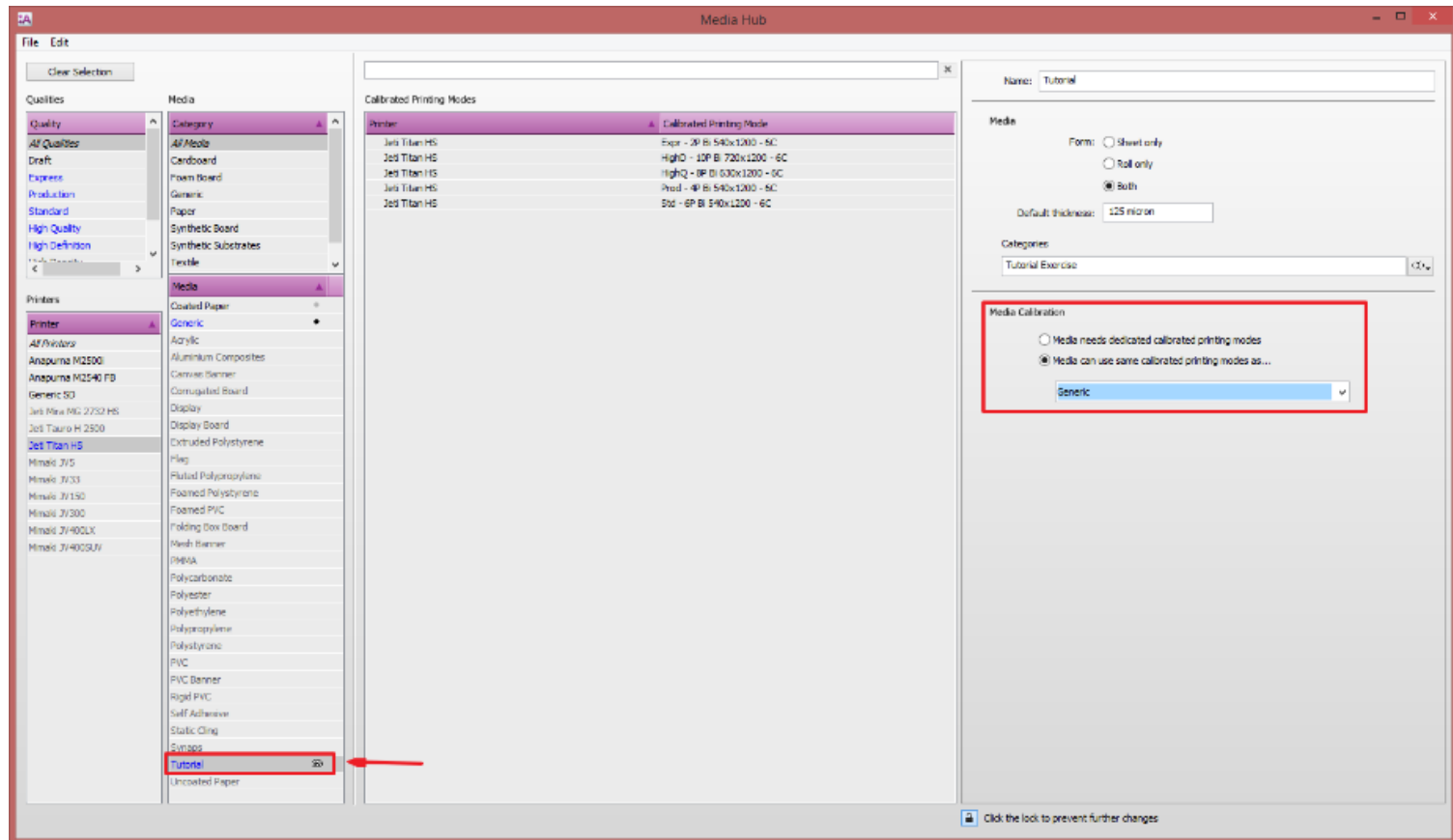
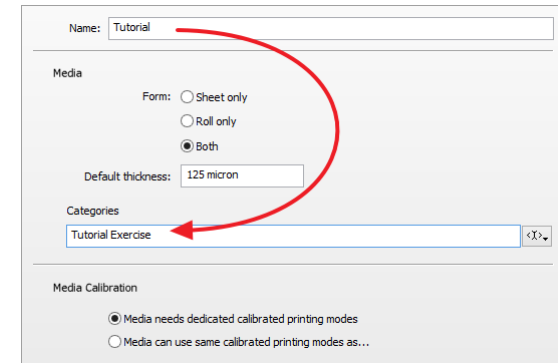
Black: CPM available but not for the active selection.

Gray: No CPM available at all.

5. Shared Calibrated Printing Modes

A Calibrated Printing Mode may be shared with one or more media types. Shared calibrations assures up-to-date calibration and profiles (updated resources are instantly shared with all linked media types when the reference is updated).

1. Select File > New Media to create a new media type.
2. Rename it to "Tutorial" (right pane).
3. Add a media category "Tutorial Exercise". Notice that there aren't any Calibrated Printing Modes available.
4. Enable the "Media can use same calibrated printing modes as..." A drop down list will appear with all available media types.
5. Select the Generic media type from the list. All Generic CPMs will now be shared with the Tutorial media type. Notice the chain icon next to the Tutorial media type. This icon indicates that the media type shares calibration from another media type.



- 6. Go to jobs window and create a new Layout Job.
- 7. Select the Tutorial. The Calibrated Printing Modes of the Generic media for the selected device will be used.

