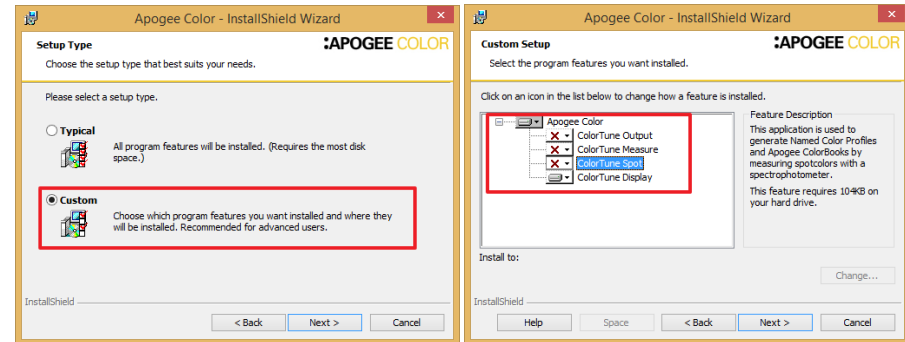


This tutorial demonstrates how to calibrate your monitor with ColorTune Display for color accuracy.

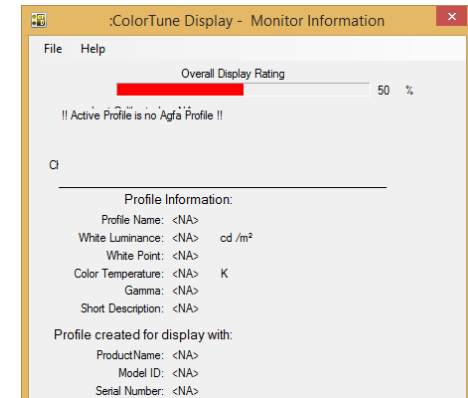
## 1. Install ColorTune Display

1. Click “Setup” in the root of the ColorTune CD-ROM.
2. An install wizard will be initiated. Click “Next” to start the installation process.
3. Accept the End User License Agreement. Click “Next”.
4. Activate “Custom” to install ColorTune Display. Click “Next”.
5. Disable ColorTune Output, ColorTune Measure and ColorTune Spot. Only ColorTune Display is needed for color accurate soft proofing. Click “Next”.
6. Proceed by clicking “Next” to acknowledge by only installing ColorTune Display. Click “Install” to start the installation.
7. Click “Finish” to complete the installation.

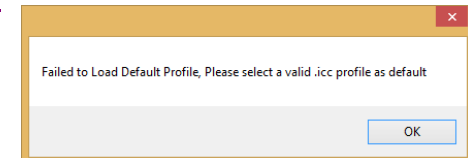


## 2. Calibrating your monitor

1. Start ColorTune Display. The current monitor rating will be shown. My un-calibrated monitor has only a 46% rating which is obviously not very good. My current monitor profile is not created with ColorTune Display as indicated in the Monitor Information pane.



*It might be that ColorTune Display will post a warning that it had failed to load the default profile. The default color management settings of Windows (from Windows Vista on) doesn't use ICC profiles. Click “OK” to continue since we will make an ICC display profile.*



2. Before starting the monitor characterization make sure that your monitor is dust and stain free.
3. Click the Characterization button to start the Characterization Wizard.
4. Select the connected measurement device (Eizo's build-in measurement devices are supported) and follow the instructions in the Status pane in the right bottom corner.
5. Click the Calibrate button to calibrate the measuring device.
6. Click Next when calibration is successful.
7. The default settings are derived from the ISO standards.
8. Select the Use Compact Model and click "Next".

Use Monitors built-in calibration  
 Use Agfa's Calibration

White Luminance :  cd/m<sup>2</sup>  
Gamma :

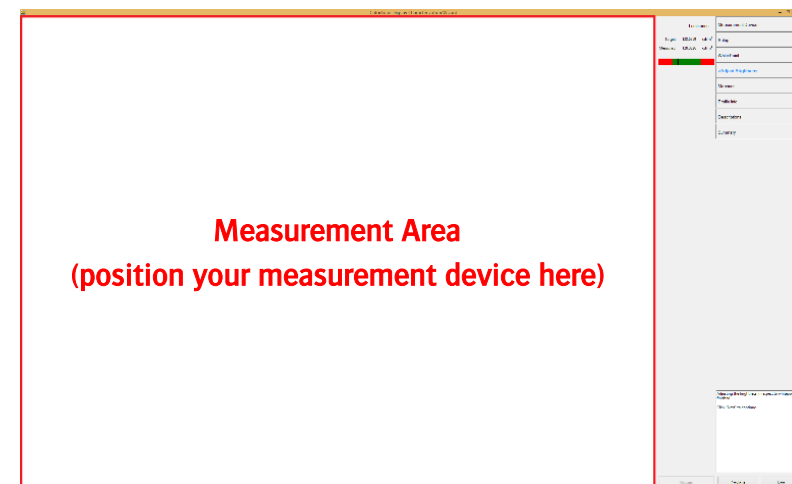
Use Compact Model  
 Use Extended Model

*In case of Eizo monitors the white luminance value might be lower. Due to warranty reasons Eizo advises to user lower values. These values will be lowered automatically to the advised level (the exact value depends on the type of display). It is still possible to increase the luminance."*

9. Use the "D50" daylight illuminant (ISO standard). Click "Next" to continue.
10. Position the measurement device on your screen.
11. Notice that the Status pane already indicates that I need to manually adjust the Brightness settings of my Monitor to 100%. I need to make sure that the measure device is not located at a spot where my monitor adjustments menu will appear (when lowering the brightness). There are monitors which support automatic adjustments without user intervention.
12. After adjusting the Brightness of your monitor to 100% (via physical buttons on your monitor) click the Measure button.
13. ColorTune Display will now start showing and measuring different color patches to see if the current monitors Brightness setting reaches the Target Luminance that we defined earlier. Probably the Brightness will be too high and needs to be lowered. ColorTune Display will ask to lower the Brightness

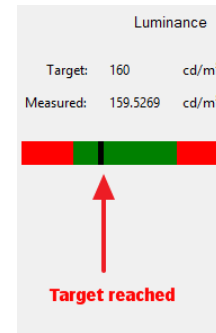
DayLight

Illuminant :   K

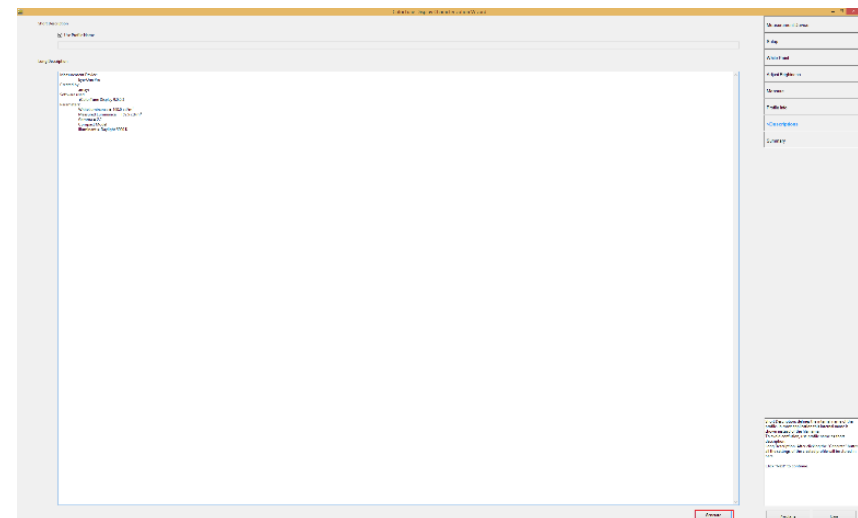


(indicated in status pane lower right corner: flashing message). The Brightness has an influence on the color reproduction. Too high brightness levels may “light out” pure colors. Lower the Brightness value with 5% and wait 10 seconds to allow the measurement device to measure and calculate the new values. Keep lowering the Brightness until the status pane indicates that the Brightness adjustment procedure has finished.

14. Click “Next” and then click the “Measure” button to initiate the measurement process.
15. Again ColorTune Display will start showing and measuring different color patches. Click “Next” once the Characterization is finished.
16. The profile info is informational and can be kept default. Click “Next” to continue.
17. Extra info can be added to the monitor profile in the Long Description section by clicking the Generate button.
18. Click two times Next to save the new profile and make this profile the active monitor profile.
19. Depending on your access rights, the profile will also be set as the active monitor profile by ColorTune Display. You can keep the monitor profile name that ColorTune Display proposes.



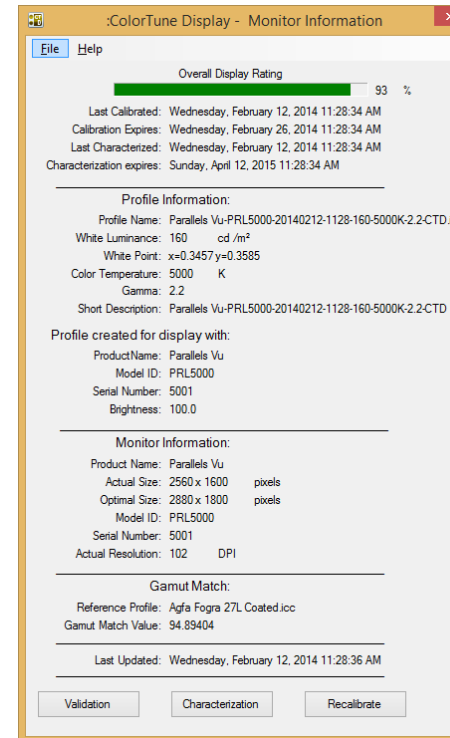
ICC Version :	4.x
Default Rendering intent :	RelativeColorimetric
Standard Observer :	2



21. ColorTune Display updates the monitor rating once the profile is activated.

Depending on the reached score this can be green (>90%), yellow (between 90% and 85%) or red (<85%). The rating is dynamically assigned which means that the rating can be lowered when the actual variables are different to the ones in the display profile.

As indicated the monitor rating after profile creation has improved a lot but is still not very high. Some monitors are just not capable of reaching high ratings.



The Recalibrate button is now available. The recalibrate wizard can be used to update the current monitor profile. It will take the same settings (white luminance, viewing conditions ...) as used during initial profile generation. The recalibrated state replaces the original ICC profile.

The Validation button is also available. The validation cycle allows validating the current display characterization against a press profile.

---

*ColorTune Display will ask to “Do you want to start the Display monitoring?” when you close the monitor rating dialog. If you click yes than a small service will be started (ColorTune icon will be visible in Windows Taskbar) which rates your monitor.*

---

### 3. Creating a job

1. Start the Asanti client and connect to your Asanti server.
2. In the Jobs overview drag the “Woman with grapefruit 493x740.jpg” file on your digital printer.
3. A layout job will be created. Click the “Create Previews” button in the lower right corner to generate a Preview of the Woman with Grapefruit image. The image will show a green magnifying glass when the Preview is being generated. When the image shows a grey magnifying glass then the Preview is ready.
4. Context-click on the image in the Image Panel and select “Edit With Preview...” - to open the Raster Preview window (also referred to as soft proof).

Notice the soft proof status icon in the lower left corner.

When the ColorTune Display helper service is running the current monitor rating will be displayed. Double-click the monitor rating icon will start ColorTune Display.

