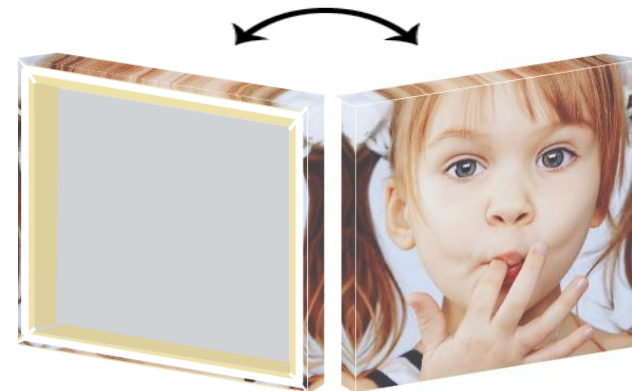


Canvas Wrapping

This tutorial demonstrates how to create a canvas wrap. The printed material is mounted on a (wooden) frame. Download the Asanti Sample Files via the Asanti Client (Help > Asanti Online > Download Sample Files).

The dimensions of the canvas frame in this tutorial are:

- Canvas size: 700x700mm
- Canvas thickness: 40mm
- Overlap on back to fasten the material on the canvas frame: 20mm



Other flavors of canvas wrapping are also covered in this tutorial:



Mirror Wrap



White Wrap



Black Wrap




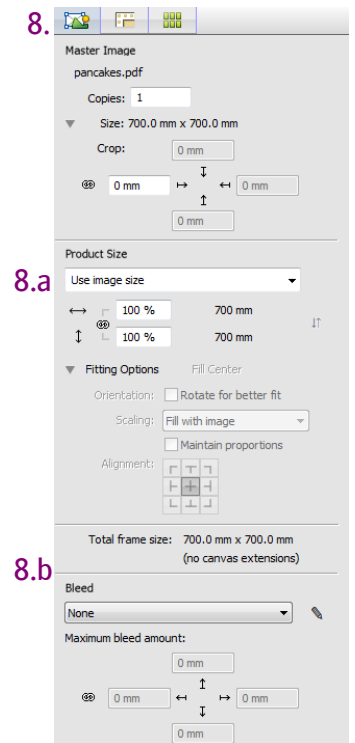
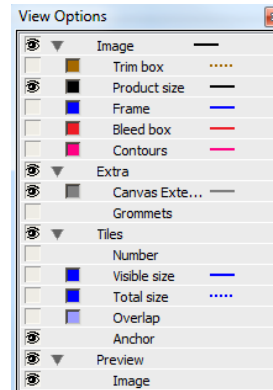
Custom Color Wrap



Gallery Wrap

1. Mirror wrap

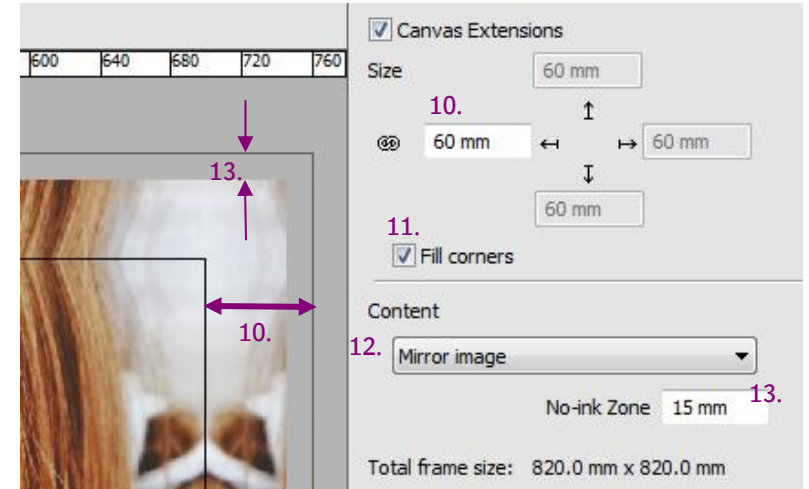
1. File > New Layout Job.
2. Choose a Printer.
3. Set media to Generic, roll and the size to 900mm.
4. Open the Finishing inspector.
 - Set cutter to Zünd.
 - Set finishing margins to iCut Corner Marks, between 10.
5. Add image pancakes.pdf.
6. Double click the pancakes.pdf to open the Image Editor.
7. Go to View options  and enable
 - a. Image – Product Size
 - b. Extra – Canvas Extension
 - c. Preview – Image
8. Product Inspector
 - a. Product Size – Use image size.
 - b. Bleed – set bleed to None



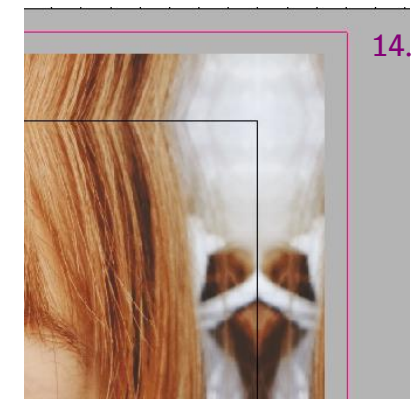
9. Select the Canvas Extensions inspector tab.
10. Enable Canvas Extensions and change the Size to 60 mm.



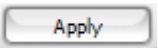
40 mm of material is needed to mount the print over the wooden frame and 20 mm is needed to stitch the canvas on the backside of the frame.

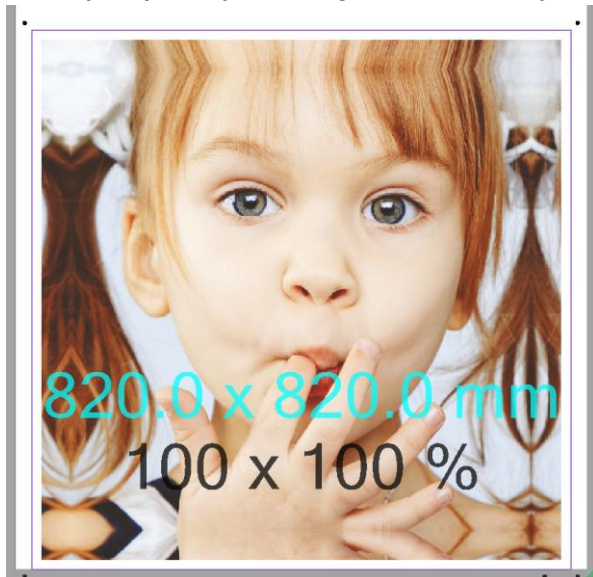
11. Enable "Fill corners".
12. Set Content to "Mirror Image".
13. Set No-ink Zone to "15 mm": the image overlaps with 5 mm on the back side of the material and a no ink zone of 15mm will be created.



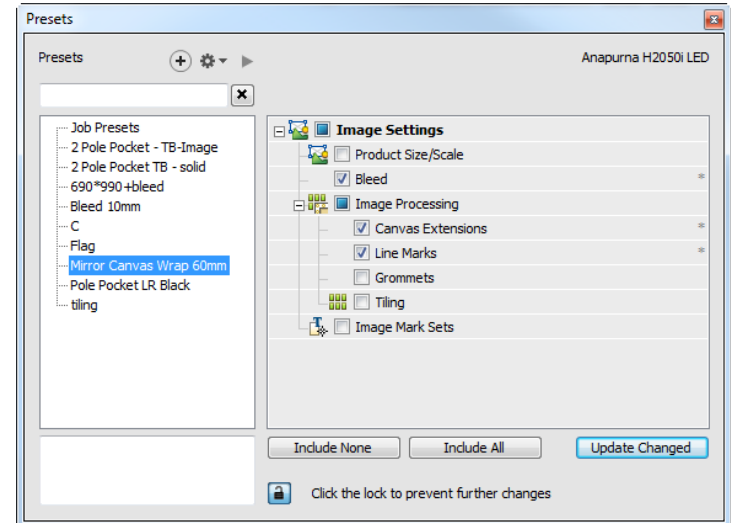
14. Open the view options – Enable "Contours" to view the frame.
15. Enable Print Line Marks – "On Extensions" to draw a line on the outer edge of the flaps. This line will be a cutter guide to manually cut the canvas.
16. Click the black square and change the color of the line mark to 100% Magenta and 10% K (0 – 100 – 0 – 10).





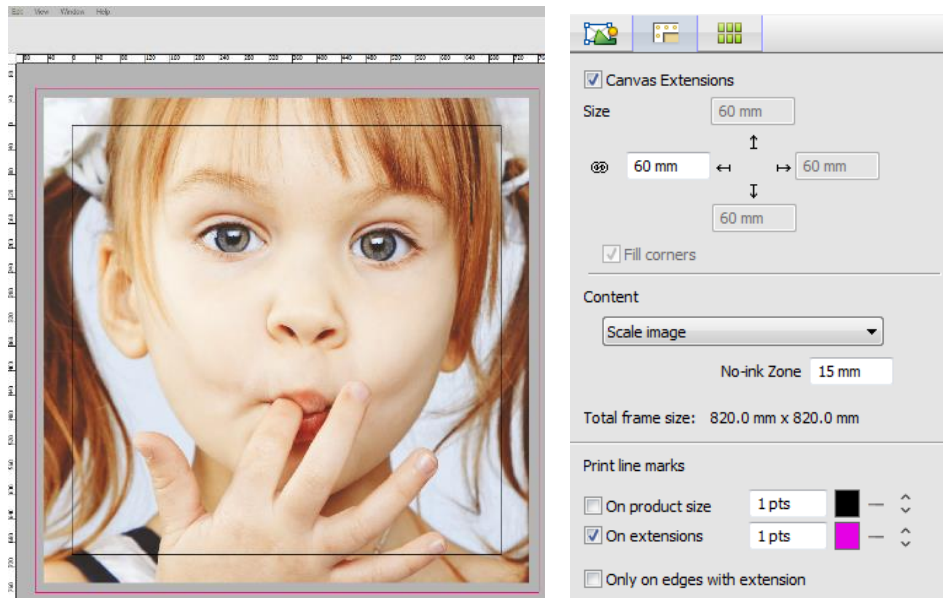
17. Click the Presets  to open the Presets window.
18. Select  to create a new Preset using the current canvas extensions.
19. Set the name to Mirror Canvas wrap 60mm.
 - a. Enable Bleed, Canvas Extensions and Line Marks.
 - b. Select Update Changed to save the settings of the Bleed, Canvas Extensions and Line Marks to this Preset.
 - c. Close the Presets window.
20. Click Apply , to apply the current settings and close the image editor.
21. Select your image and place it on the Sheet while holding the C-key to place your image centered on your roll media.



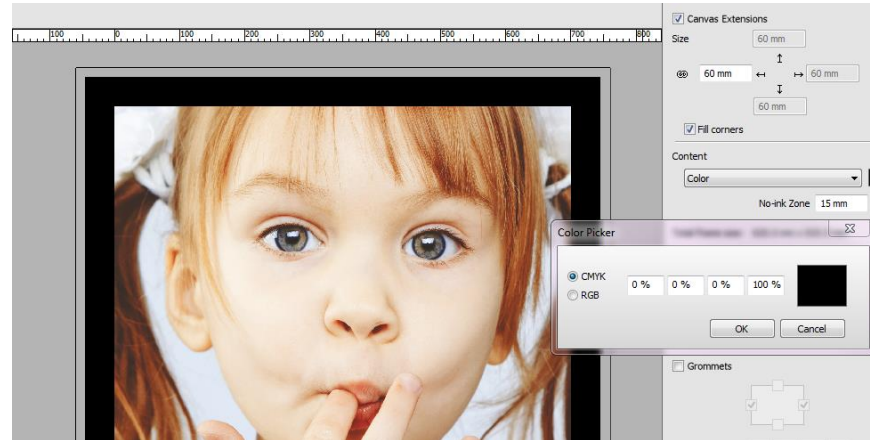
22. Select your image in the image pane – context click – duplicate image.
23. Select the duplicated image.



24. Click the Presets  to open the Presets window.
25. Double click the Mirror Canvas Wrap 60mm Preset to apply this Preset. Close the Presets window.
26. Double click the duplicated image to open the Image Editor.
27. Select the  Canvas Extensions and Grommets Inspector tab.
28. Change Content to "Scale Image" to create a Gallery Wrap Canvas Banner.



- 29. Change Content to “Color”. Click the white square to open the “Color Picker”.
- 30. Change the color of the Canvas Extension.
- 31. Set to 0-0-0-100% to create a black wrap.



Black Wrap

- 32. Select Canvas extension Content “No Ink” to leave the canvas extension empty (white wrap).



White Wrap