

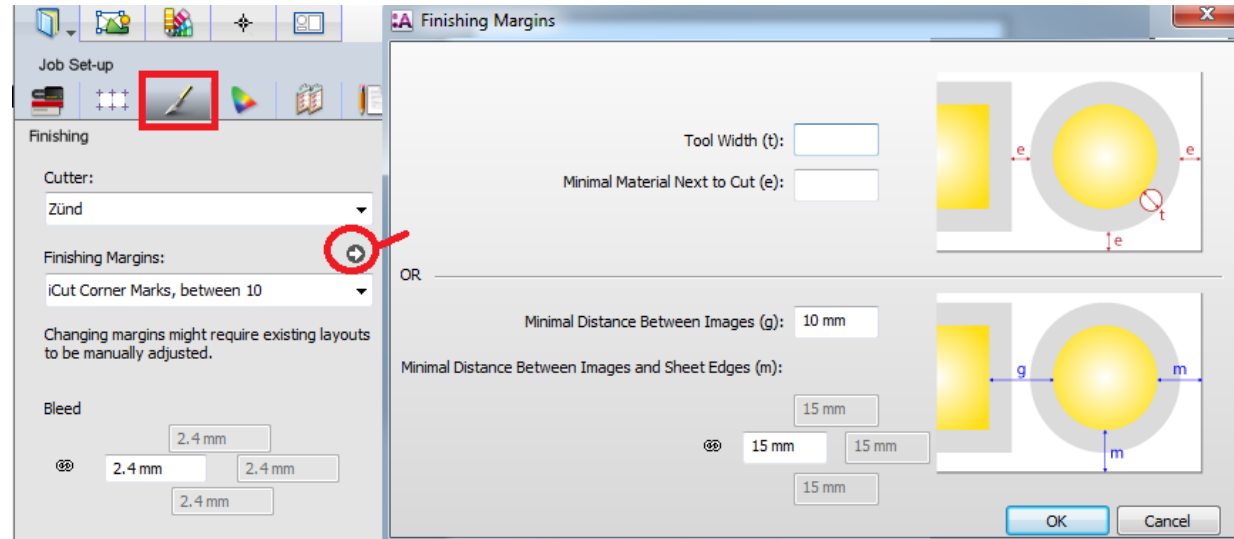
# Creating a job with iCut marks

This tutorial demonstrates how to output a job with iCut marks.

Download the Asanti Sample Files via the Asanti Client (Help > Asanti Online > Download Sample Files).

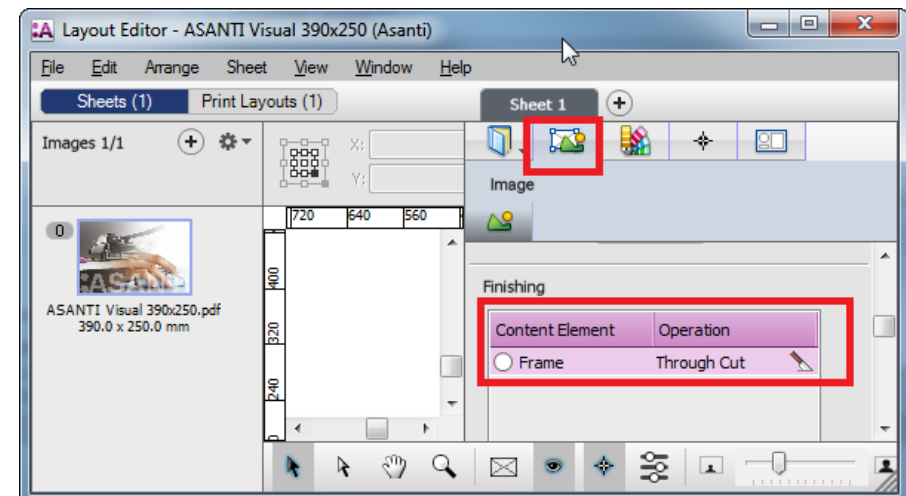
## 1. Create a new job

1. File menu > New Layout Job.
2. Select a printer.
3. Select the Job Set-up > Finishing inspector.
4. Select the Cutter: Zünd.
5. Select Finishing margins “iCut Corner Marks, between 10”.
6. Click the arrow next to the “Finishing Margins” title.
  - Distance between images is set to 10 mm. This is needed to preserve bleed.
  - Distance between images and sheet edges is set to 15 mm. This is needed to preserve bleed and space for the iCut marks.
7. Click ok.

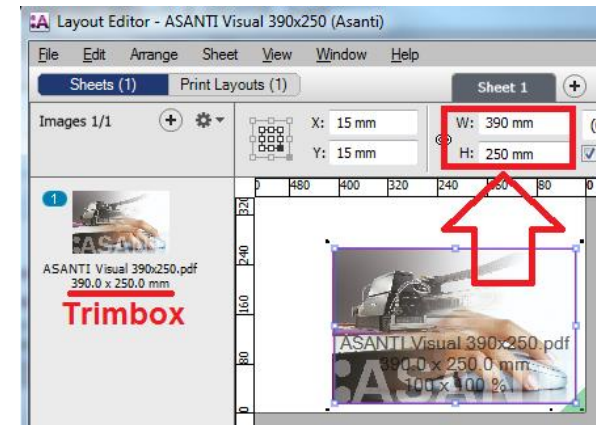


## 2. Place images

1. In the Image panel click “+” and browse for “ASANTI Visual 390x250.pdf”, click open.
2. Select the image; select the Image inspector. In the Finishing settings, the frame is set to Finishing operation “Through Cut”.



3. Drag the image on the sheet. In the Positioning toolbar, the size of the frame is set to the trimbox of the file: 390x250mm.



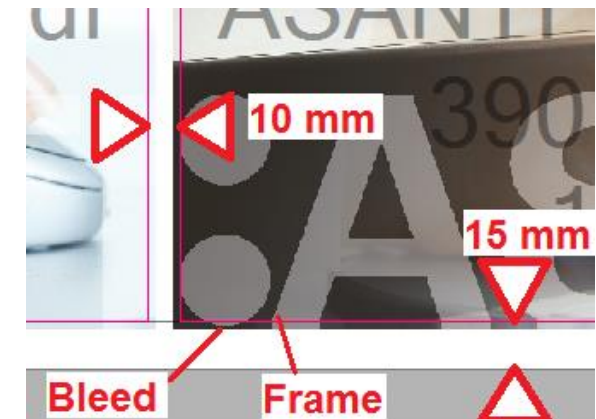
4. Drag the file a second time on the sheet.

5. Zoom in using the zoom tool from the Print Layout toolbar.



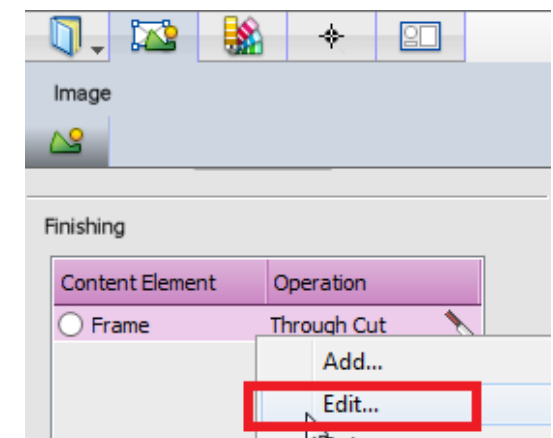
6. 15mm distance is kept between image frame and sheet edge. This is defined by the Finishing Margins. The iCut marks are placed inside this margin.

7. The image is placed next to the original one with 10 mm in between the frames. The bleed outside the frames is preserved.



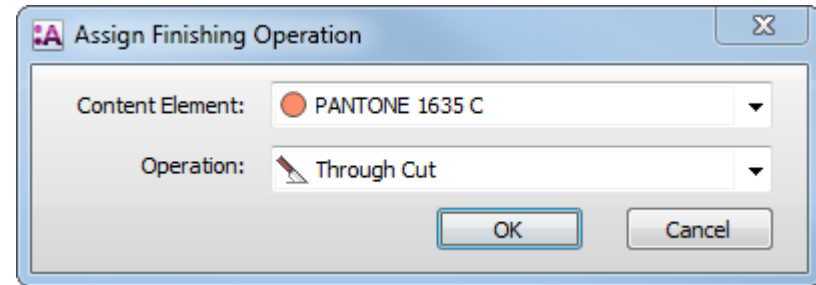
8. Add another file to the Image panel: Asanti Box\_Pantones.pdf.

9. Select the new image, select the Image inspector. In the Finishing settings, the frame is set to Finishing operation "Through Cut".

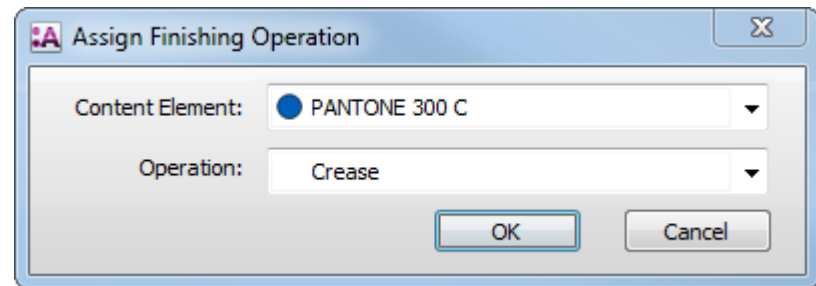
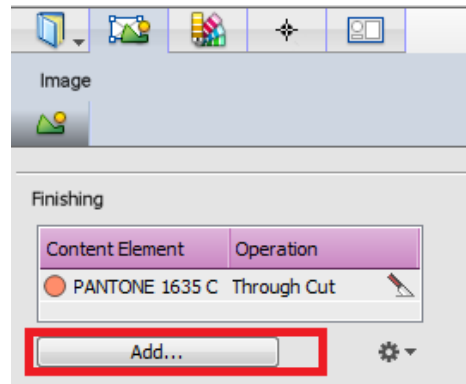


10. Context click element "Frame">Edit...

11. Change content element to PANTONE 1635 C, click ok.

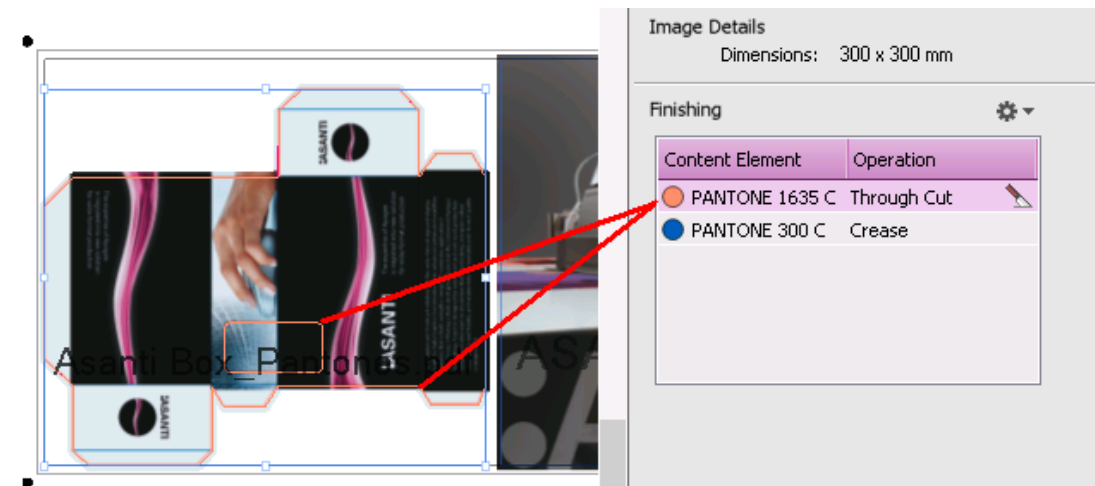


12. Click Add...  
Select Content Element  
PANTONE 300 C, Operation  
"Crease", click ok.

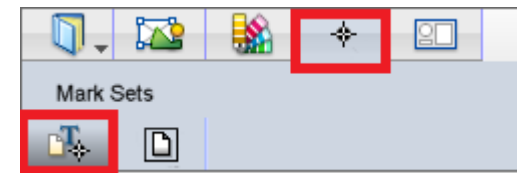


*In Asanti, vectors from the input documents can be assigned to a finishing operation if these vectors are drawn in a spot color.*

- 13. Drag "Asanti Box\_Pantones.pdf" on the sheet.
- 14. Select "Asanti Box\_Pantones.pdf" on the sheet.
- 15. In the Finishing settings, select Content element PANTONE 300 C. This shows up the Crease operation on the image in blue.
- 16. Select Content element PANTONE 1635 C. This shows up the "Through Cut" operation.



17. Select the Marks Set inspector. The Zünd Sheet Marks Set is automatically selected because we selected the Zünd Cutter device. This Mark Set places iCut marks outside the corners of the image block (all images of the Print Layout).



### 3. Submit job

1. In the right bottom of the Layout Editor click "Submit job".
  - Select Print files: "Make and send to printer". This will render and output the flat to the Digital printer.
  - Select Cut files: "Make and send to cutter". This will output a pdf file with cutting information.
2. Click "Submit".
3. When the layout is output, it shows a checkmark. Note that only a result for the image block with the marks is produced.
4. Open the exported cut file in Acrobat or if available in the cutting software. By default this file is written to \\Asanti Server\FinishingRoot\Zünd\.
5. The file contains a layer per Finishing operation (Through Cut and Crease) and one for the iCut marks (Regmarks).

