

Working with Bleed

Bleed is the area to be trimmed off or outside the printing sheet. Bleed contains the image data outside the finished product. It accommodates for deficiencies in printing, printing material and finishing. E.g. to avoid white edges on the trimmed thus finished products.

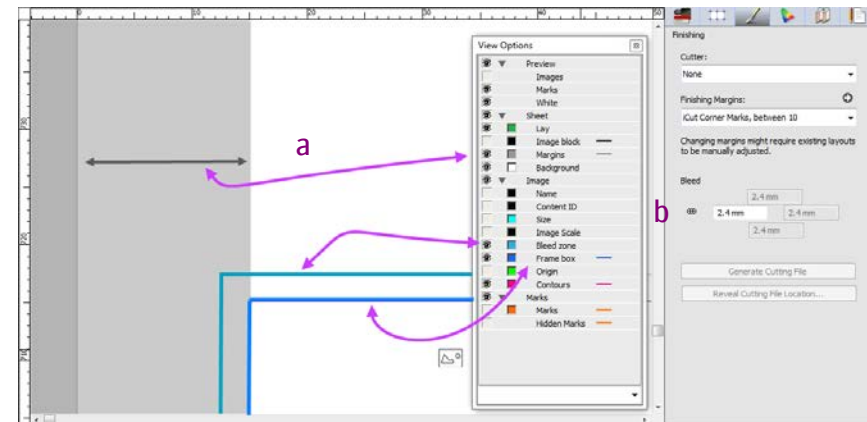
This tutorial describes how bleed is managed in Asanti for


1. Documents and files that include bleed.
2. Documents and files that do not include bleed and where bleed is needed.
3. Apply different bleed settings within 1 Asanti job.

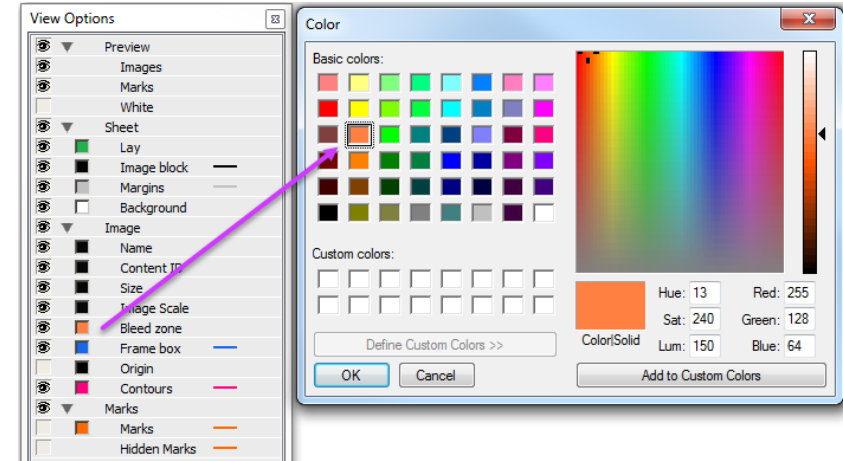
Download the Asanti Sample Files via the Asanti Client (Help> Asanti Online> Download Sample Files).

1. File has bleed

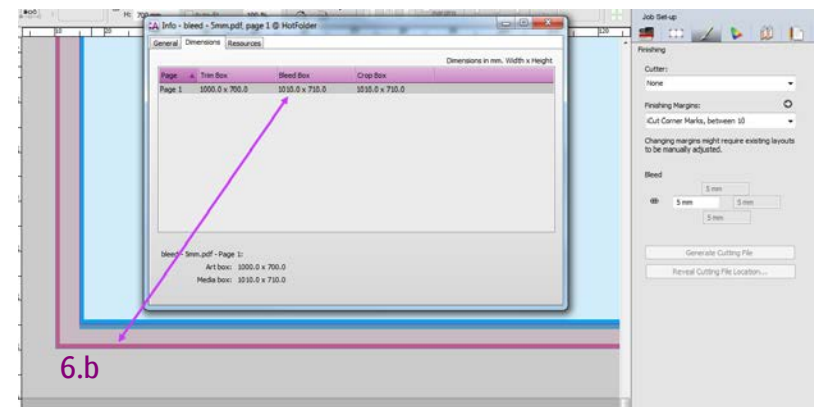
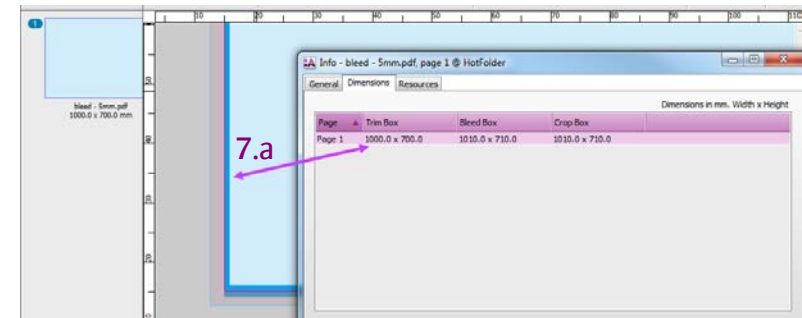
1. File> New Layout Job.
2. Set a printer, set media to generic and set size to 1400x1000mm.
3. Go to the Finishing Inspector
 - a. Set the Finishing Margins to iCut Corner Marks, between 10.
 - b. Verify if the job's bleed settings are set to 2.4mm. By default, this is 2.4 mm (the default value in Asanti 2.0 was 3.18 mm).




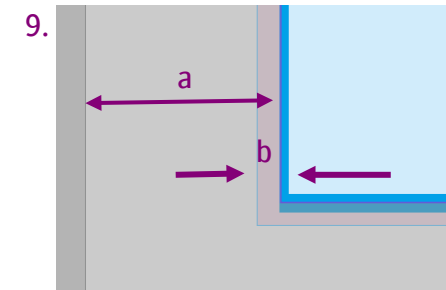
4. In the view options  enable Margins (a) and Bleed (b) zone, close the view options.
5. Click the colored rectangle next to bleed zone and use the color picker to change the color to orange.
6. Add the "Bleed-5mm.pdf" to the images panel and place the image on the sheet.



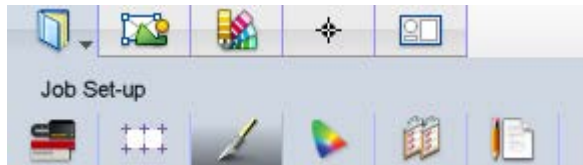
7. Context click the image in the image pane –Get Info. The Dimensions tab displays the size of the Trim and bleed box.
 - a. The trim box is colored cyan and has a size of 1000x700mm.
 - b. The bleed box is 1010mmx710mm and is colored magenta.
8. Close the Info Window.



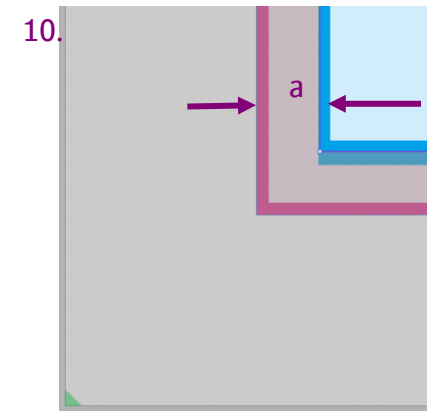
9. Zoom in to the lay corner  (left or right) using the magnifier glass to inspect the image placement on the sheet and the selected finishing margin.
10. The trim box of the image (solid cyan) has been placed and aligned to the finishing margin (a). As result the image bleed is placed in the finishing margin(b). Only 2.4mm of the image bleed box is currently displayed and used in Asanti (b).



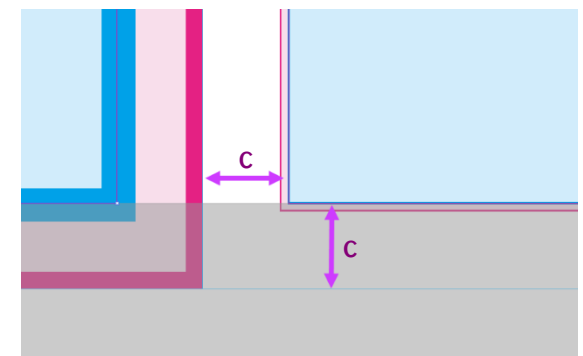
11. Go to the Finishing Inspector, change bleed to 5mm.




- a. The bleed available in the pdf is used, displayed and placed in the finishing margins(a).

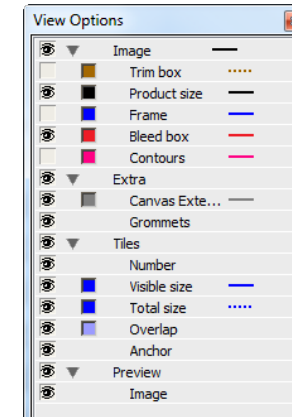
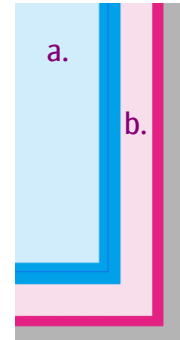


12. Select the bleed -5mm.pdf in the image pane, context click, duplicate image.
13. Select the duplicated bleed-5mm.pdf, change the scaling factor to 10%, place your image on the sheet. Zoom in.
14. Both image and bleed content are resized, but the bleed zone (blue line) is still 5 mm (c) containing 0.5 mm of bleed content.
15. Save this job as job template. (File> Save as Template.) Name it "Working with Bleed". It will be used as base template in the next exercises.



2. Image Editor Bleed inspector

16. Double click the bleed-5mm.pdf to open the image in the image editor.
17. Select the view options , enable Bleed box and Product Size, disable Contours
18. Zoom into the bottom and right corner of the image
 - a. The edge of the trim box is a solid 100% cyan line.
 - b. The edge of the bleed box is a solid 100% Magenta line.

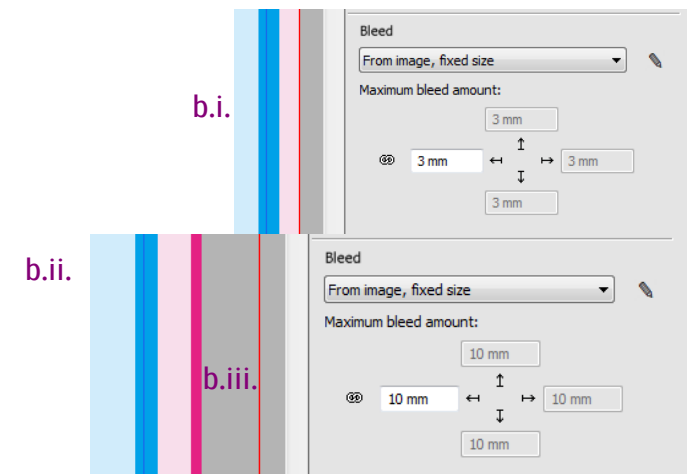
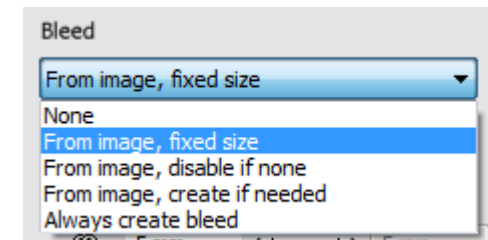


19. In the Product Size Inspector  – Bleed section 5 options are available.

- a. **None**, sets the amount of bleed to 0 and ignores any bleed in the image.
- b. **From Image, fixed size**. Sets the amount of the bleed and uses the bleed available in the image. If no bleed is found no bleed will be used.

This the default setting used for the bleed used in the layout editor.

- i. Set bleed amount to 3mm + enter, the first 3mm bleed zone will be used.
- ii. Set the bleed amount to 10mm + enter, the bleed from the image is used.
- iii. The orange frame represents the requested bleed box.

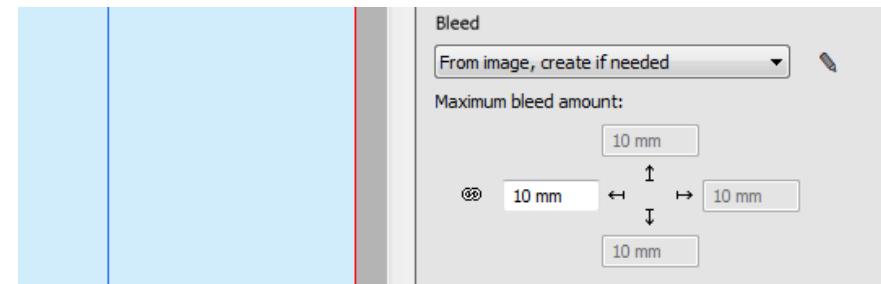
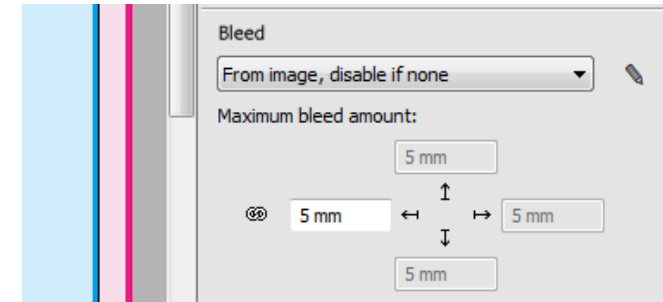


c. **From Image, disable if none.** Sets the amount of bleed corresponding to the bleed found in the image. No bleed will be generated.


- d. **From image, create if needed.**
- i. Set the bleed amount to 3mm. The image has 3mm bleed and Asanti will use the existing image bleed.
 - ii. Set the bleed amount to 5mm. The image has 5mm bleed and Asanti will use the existing image bleed.
 - iii. Set the bleed amount to 10mm. The image has only 5mm bleed, 10mm is requested. Asanti will generate bleed by mirroring the pixels around the trim box. The existing image bleed (magenta) is replaced.

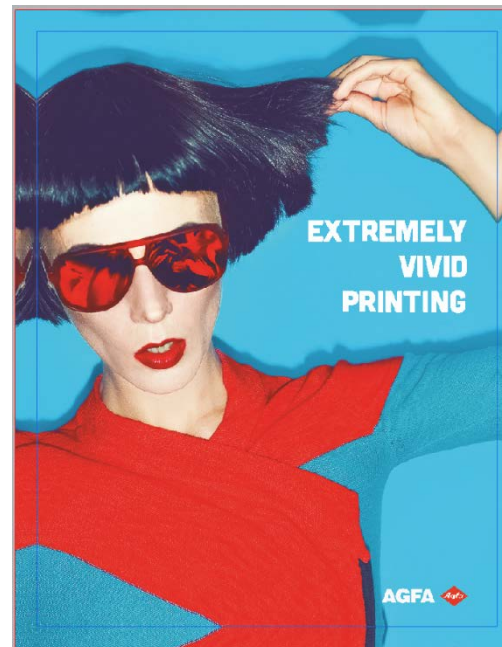
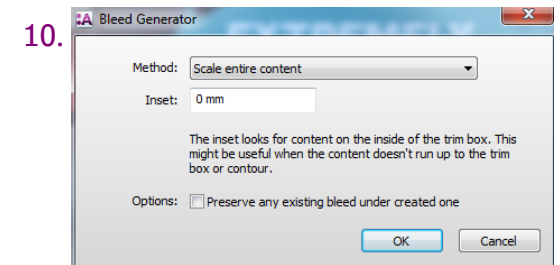
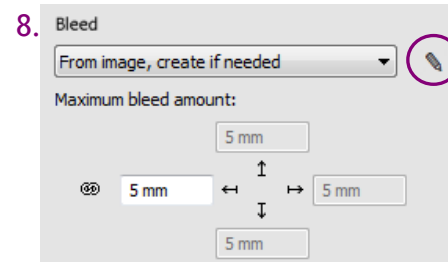
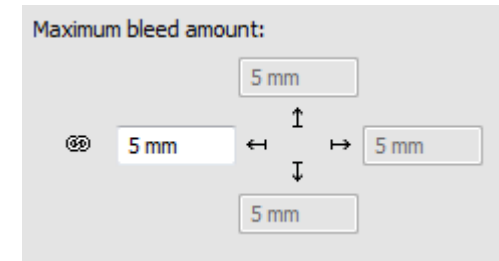
20. Click Apply to go back to the layout editor.

21. Submit > Hold.






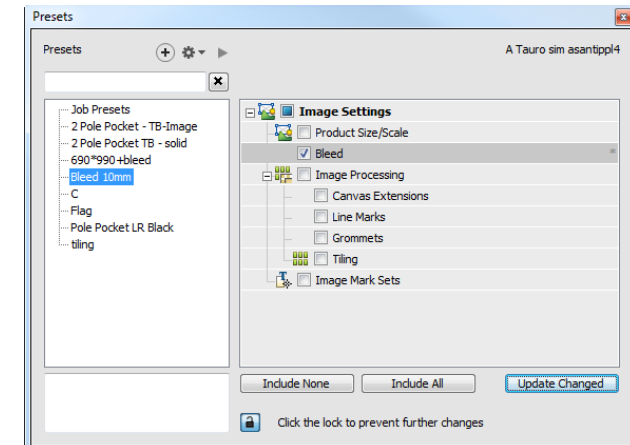
3. File has no bleed and bleed needs to be created.

1. File > New from Templates – Open Working with bleed.
2. Add EVP85x114.pdf to the image pane.
3. Context click, Get Info. Dimensions Tab; Trim box and Bleed box are not available. Close the Info window.
4. Double click the image to open the image editor.
5. In the view options  enable bleed box and Preview>Image.
6. The orange box around the image represents the image bleed amount. This value (5 mm) is according to the bleed value used in the layout editor – finishing margins. No image bleed content is available for this image.
7. In the product size change to 50% + enter.
8. In the bleed inspector select from image, create if needed. Asanti creates the bleed by mirroring the pixels because no bleed is defined in the image.
9. Select the pencil, to edit the Bleed generator settings.
10. Change to Scale entire content+ OK.
The image was scaled to create the requested bleed amount.
11. Click Apply to close the image editor
12. Place the image on the sheet, Submit your job.

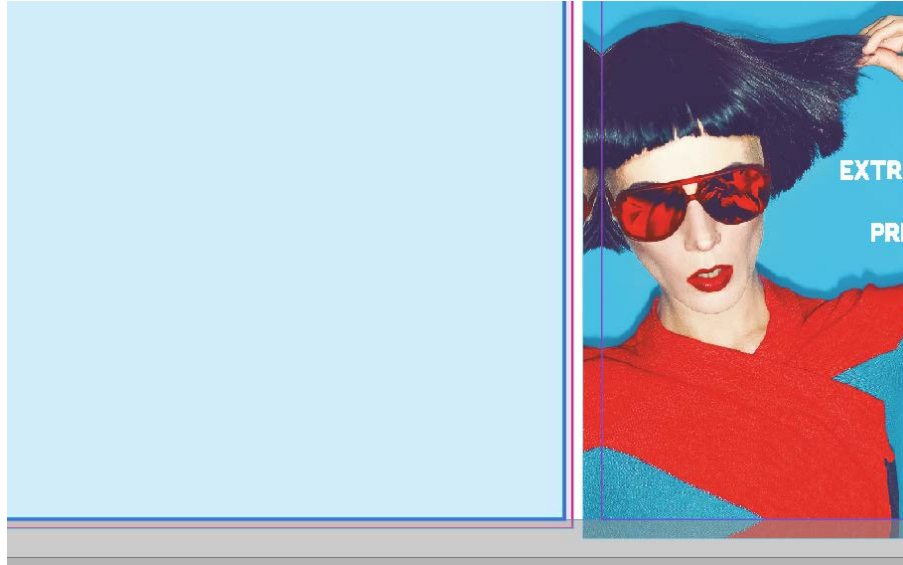


4. Apply different bleed settings within 1 job

1. File > New from Templates – Open Working with bleed.
2. Add EVP85x114.pdf and bleed-5mm.jpg to the image pane.
3. Double click EVP85x114.pdf to open the image editor.
4. Set bleed: from image, create if needed. Maximum bleed amount 10mm.
5. Open the presets .
6. Select  to add a new preset, give it the name bleed 10mm.
7. Check the bleed and select Update Changed.
8. Close the presets and cancel the image editor by clicking Don't Apply.
9. Select the EVP85x114.pdf in the image pane and select the presets.
10. Double click the Bleed 10mm preset to apply this preset to the EVP85x114.pdf
11. Close the Presets window.
12. In the image pane select the bleed – 5mm.pdf.
13. Go to the image inspector, the used bleed for this image is 5mm.
14. Select the EVP85x114.pdf. Go to the image inspector, the used bleed is 10mm.
15. Go to the finishing inspector. Select the arrow  to edit the finishing margins.
16. Change the minimal distances between image to 20 mm, click ok.



17. Add both images to the sheet. The image frames or trim boxes are aligned to the finishing margins and each image has its unique bleed amount in content and size.



18. Submit Job.