


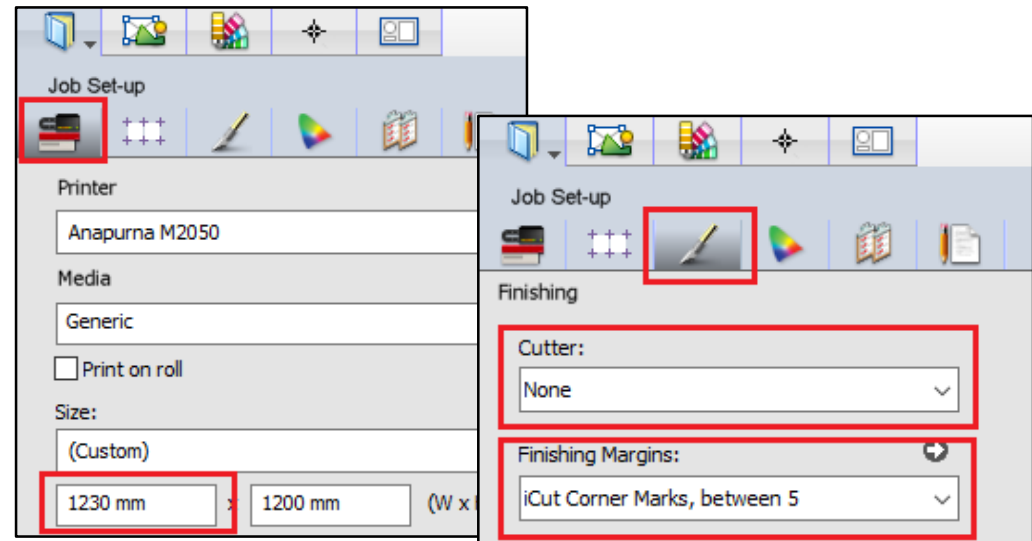
Working with Mark Sets

This tutorial demonstrates how to work with Mark Sets in an Asanti job.

Sample files: Download the Asanti Sample Files via the Asanti Client (Help > Asanti Online > Download Sample Files).

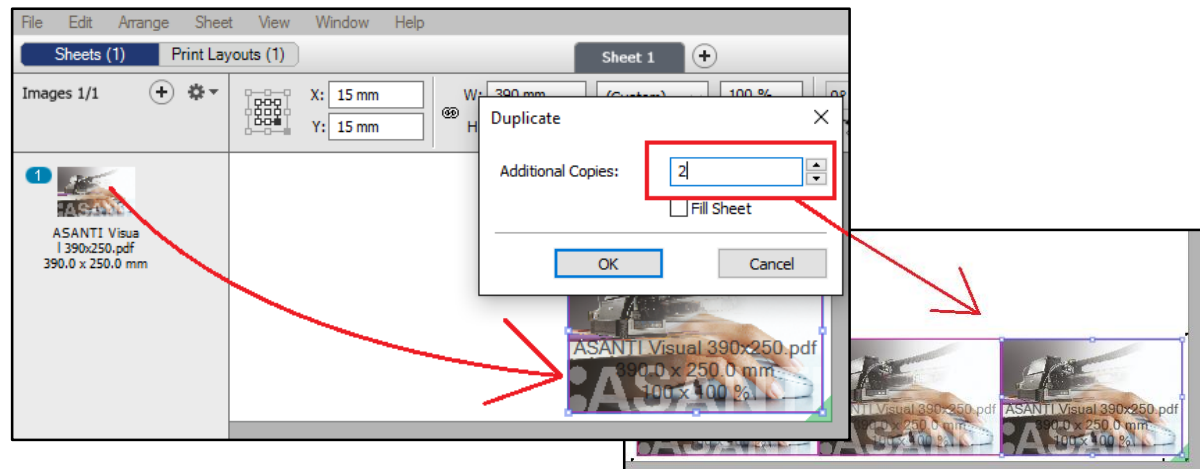
1. Create a new job

1. File Menu > New Layout job.
2. Select the Job Set-up >  (Media) inspector. The Media Size Width should be at least 1230 mm.
3. Select the Job Set-up >  (Finishing) inspector.
4. Select the Cutter: Zünd.
5. Select Finishing margins “iCut Corner Marks, between 5” to preserve space to place marks.






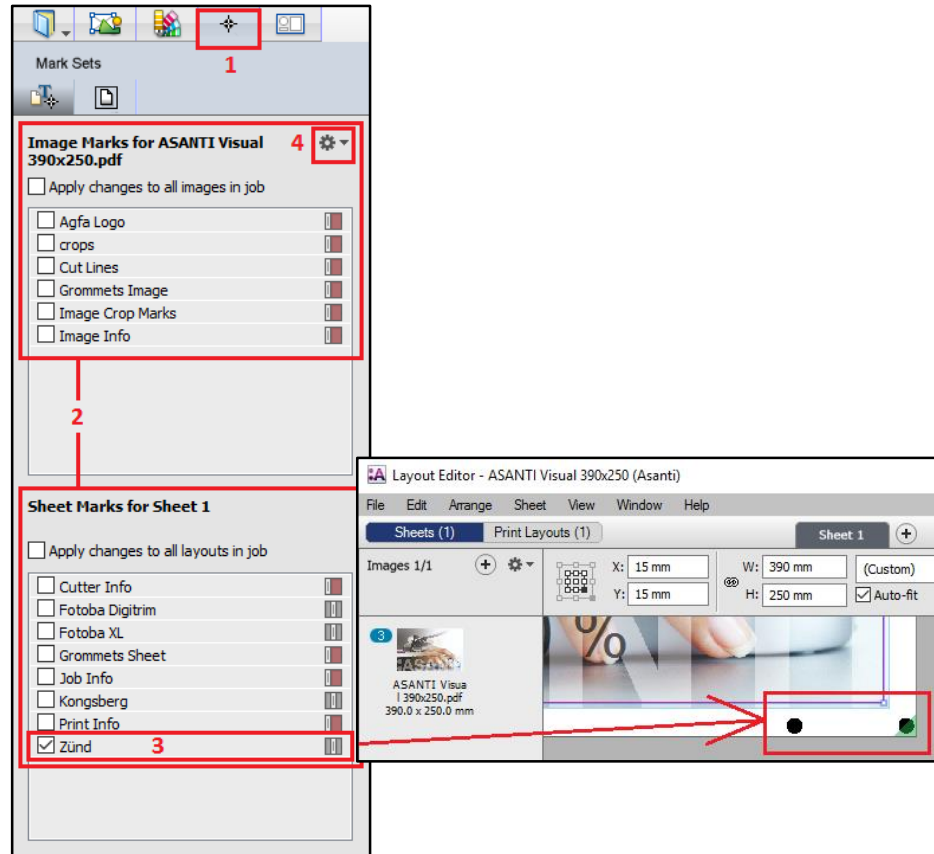
2. Place an image

1. In the Images Panel click “+”, browse for “ASANTI Visual 390x250.pdf” and click Open.
2. Drag the image to the Sheet.
3. Duplicate (CTRL+D) two additional copies.

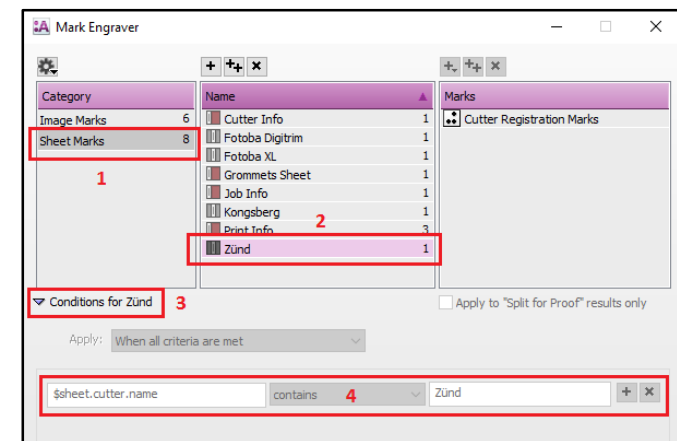



3. Managing Mark Sets

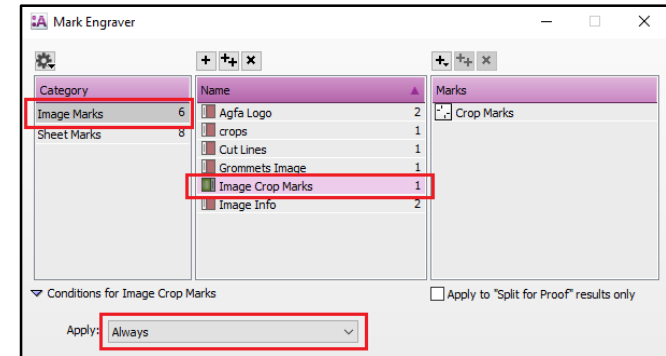
1. Select the Marks Sets inspector (1). There are two Mark Sets Categories (Image Marks and Sheet Marks) (2). The placing is conditional. We have three types of conditions which are indicated by the icons on the right. "Manually only" , "Based on criteria"  and "Always" .
2. In our job only the "Zünd" Sheet Mark Set is selected and placed on the sheet (3).
3. Click the cogwheel > Manage Mark Sets (4). The Mark Engraver opens.



4. Select the Sheet Marks Category (1) and select the "Zünd" Mark Set (2).
5. Expand the Conditions for Zünd (3). This Mark Set is automatically placed in our job because the condition is fulfilled (selected Cutter name must contain "Zünd") (4).

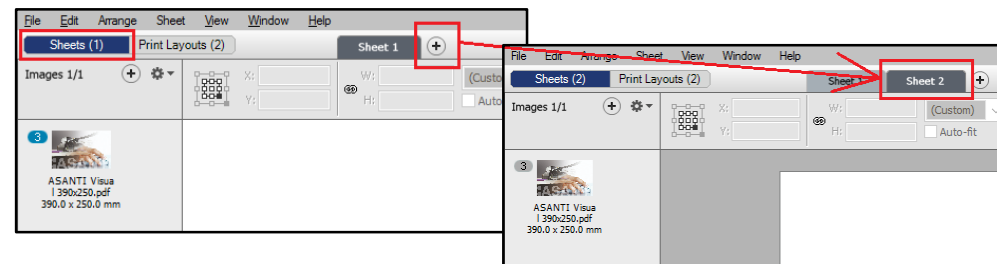


6. In the Image Marks Category select the “Image Crop Marks” Mark Set.
7. Unlock  and change the Condition to Always. The icon color changes to green to indicate it will be placed on any job.

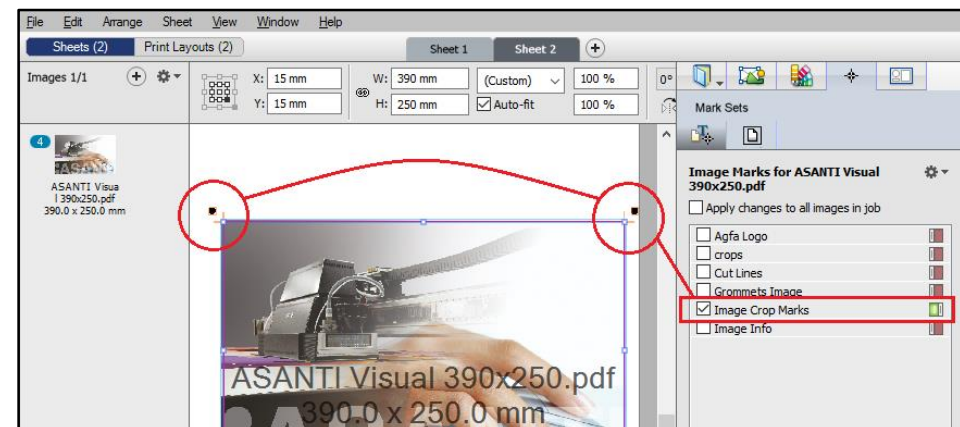


4. Reapplying Mark Sets

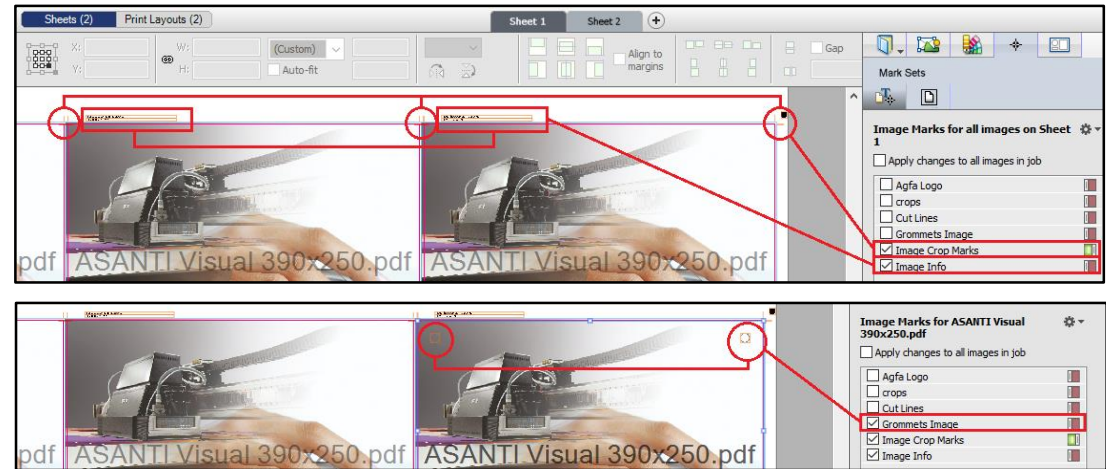
1. Return to the Layout Editor.
2. In the Sheets Panel click “+” to add a second Sheet.



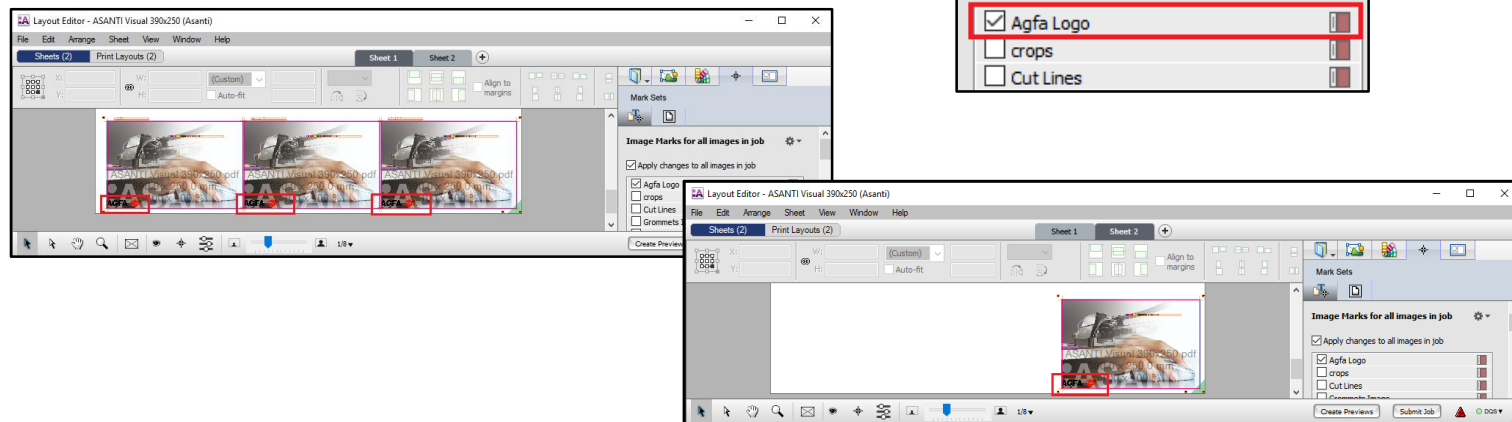
3. Drag the image from the Images Panel to the new Sheet, The Image Crop Marks are automatically placed. To verify, select the Zoom Tool and use the rubber band technique to zoom in at the upper image corners.



4. Select Sheet 1 and notice that these images have no crop marks.
5. Select Sheet > Reapply All Marks Sets in Job (CTRL+SHIFT+M): this action applies the marks conditions as defined in the Mark Engraver again. Now all images have crop marks.
6. Manually select the Image Info Mark Set in the Image Marks of the Marks Inspector. This places an informational text mark above each image on the current Sheet only (verify Sheet 2).
7. On Sheet 1 select the most right image only and manually select the Grommets Image Mark Set. The mark is placed on the selected image only. Deselect the Mark Set to remove it again.



8. Select “Apply changes to all images in job” and manually select the Agfa Logo Mark Set. The mark is placed on all images on both Sheets.



9. Open the Mark Engraver window (CTRL+ALT+3) and change Image Crop Marks back to Manually only.
10. In the Layout Editor select Sheet > Reapply All Marks Sets in Job (notice that manually selected marks in the Marks inspector like the Image Info and Agfa Logo are removed).
11. Select Edit > Undo Apply Mark Sets (CTRL+Z) and submit the job.