

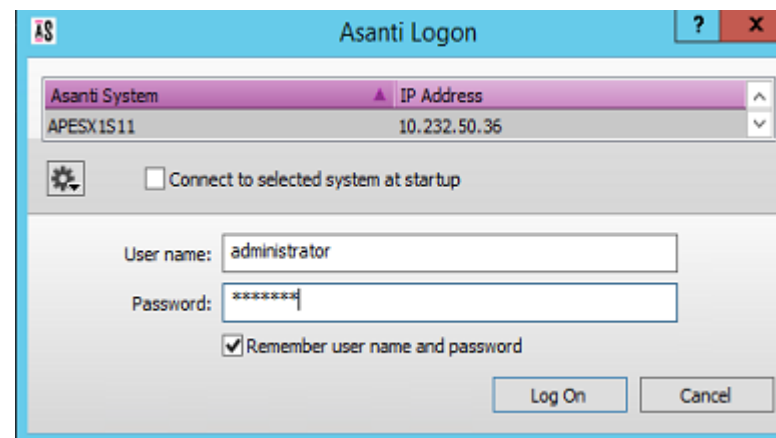
Creating an Asanti Job

This tutorial demonstrates how to process a job in Asanti.

Download the Asanti Sample Files via the Asanti Client (Help > Asanti Online > Download Sample Files).

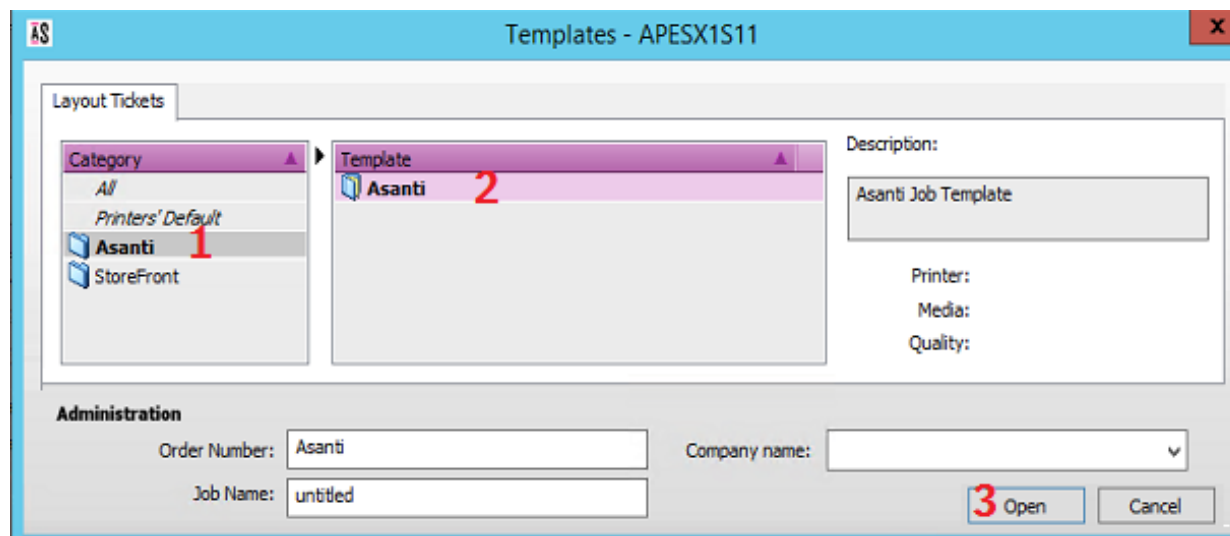
1. Starting the client

1. Double click the Asanti client short cut on the desktop.
2. Select the Asanti System.
3. Enable "Connect to selected system at startup".
4. Enter username and password to login. This is a windows user on the Asanti Server or a Windows network user that has access to the Asanti Server.
5. Enable "Remember user name and password"
6. Click "log on".

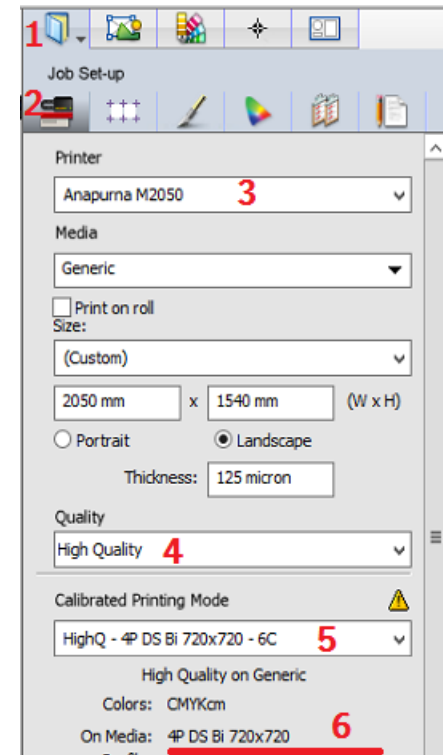


2. Creating a new job

1. In the jobs window, select File menu > New from Templates...
2. Select category Asanti (1).
3. Select Template Asanti (2) and click "open" (3).

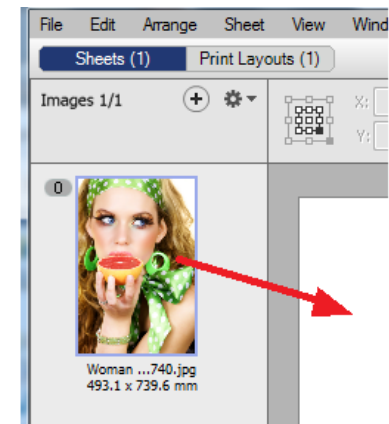
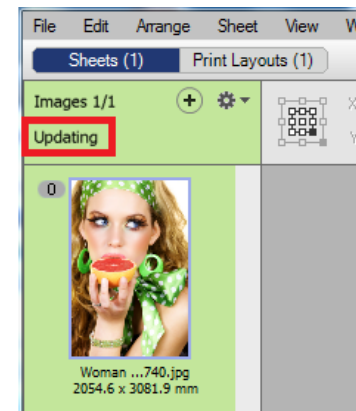
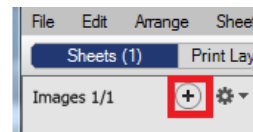


4. On the right side of the Layout Editor, the Inspector panel is shown.
5. In the Job Set-up (1) > Media inspector (2), select a Printer (3).
6. Select "High Quality" from the Quality drop-down list (4).
7. Select your Calibrated Printing Mode (5) e.g.: HighQ – 4P DS Bi 720x720 – 6C.
At the bottom of the inspector the Printing mode (6) is shown for the chosen quality (e.g. 4 Pass Double Strike Bi-directional 720x720 dpi).



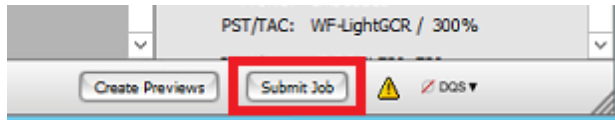
3. Adding images

1. In the Images pane click "+" and browse for the "Woman with grapefruit 493x740.jpg" file. Select the file and click "Open".
2. As long as the background of the image is green, the system is busy processing the image. When the green background is gone, drag the image from the Images pane to the Sheet. Depending on the selected printer, the image is automatically placed on the bottom left or right side of the Sheet.

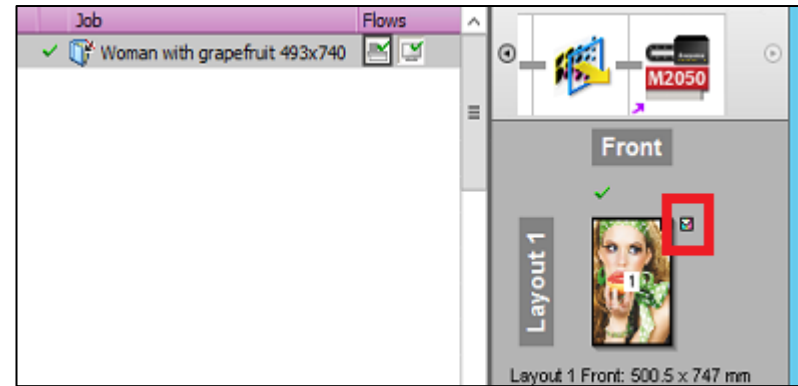


4. Submit job

1. In the right bottom of the Layout Editor click “Submit job”.



2. Select Print Files: “Make and send to printer”. This will render (rip) and output the sheet to your printer.
3. Click “Submit”.
4. When the job is ready to be printed, the job flow identifier and the results will show a check mark.

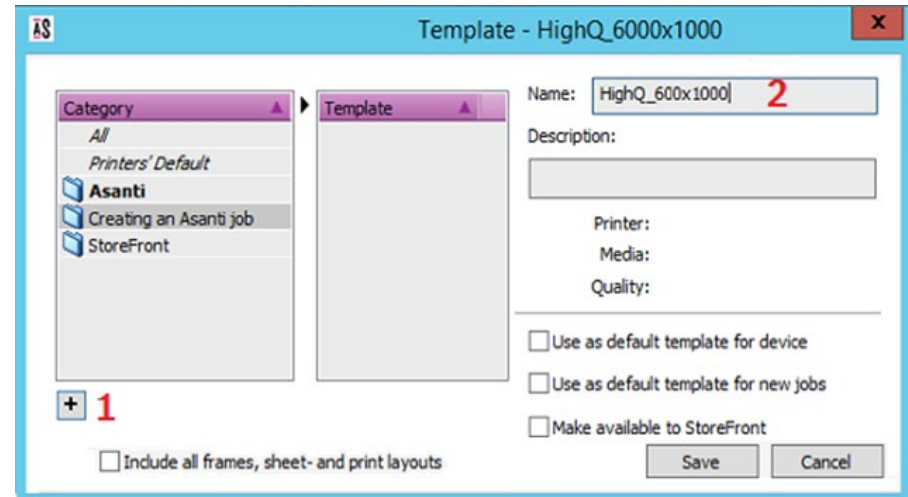


5. Save as Template

1. Context click the job “Woman with grapefruit 493x740”>Edit job...
2. Set sheet size to 600x1000mm.
3. Select File menu > Save as Template...
4. Click the “+” button (1) to create a new category. Give the category a name.
5. Change the name of the ticket template to “HighQ_600x1000” (2) and click Save.

It is not possible to save a template in the categories “All”, “Printers’ Default” and “Asanti”.

6. Change sheet size to 900x900mm.
7. Set Quality to “Express”.



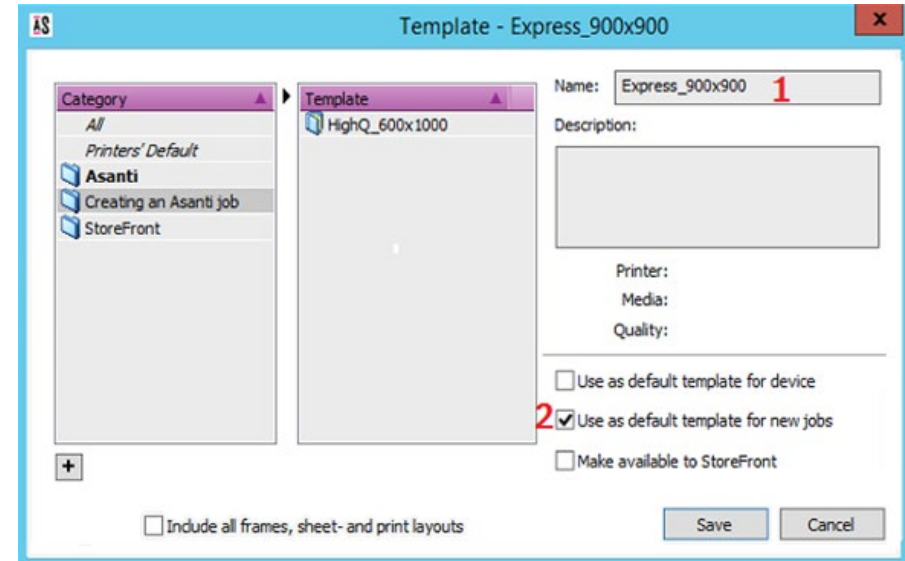
8. Select File menu > Save as Template...
9. Select your template category again.
10. Change the ticket template name to "Express_900x900" (1).
11. Enable "Use as default template for new jobs" (2) and click Save.

When checkbox "Use as default for new jobs" is enabled, this template will be used when "File > New layout" is chosen from the jobs window.

12. In the right bottom of the Layout Editor click "Submit job".
13. Select Print Files: "Make and send to printer". This will render (rip) and output the sheet with the new settings to your printer.
14. Click "Submit".

6. New from Default Template

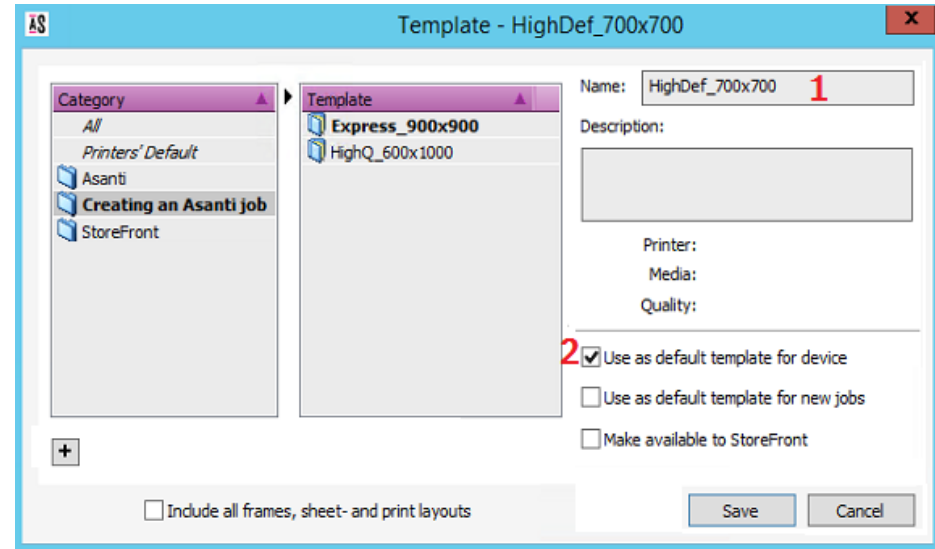
1. In the jobs window, select File menu > New from Templates...
By default the template Express_900x900 is selected as this is the default for all jobs.
2. Open template HighQ_600x1000. The sheet size of the new job is set to 600x1000mm and the Quality is set to High Quality.
The template doesn't contain images or frames from the original job, only the settings in the inspectors are preserved.
3. Upload file "Woman with grapefruit 493x740".
4. Place the image to the sheet.
5. In the right bottom of the Layout Editor click "Submit job".
6. The job name is automatically set to the first image that is imported to the job. Change the job name to "Woman with grapefruit 493x740_2".
7. Select Print Files: "Make and send to printer".
8. Click "Submit".



When creating a new job, Asanti never uses the same settings as the previous job, instead all job settings are taken from a template.

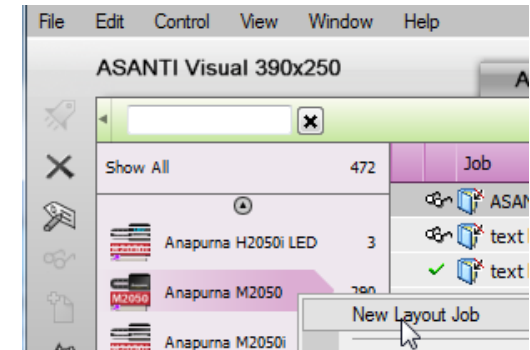
7. Save as default template for Device

1. In the jobs window, select File menu > New Layout job. This opens the default Template Express_900x900. Note that the sheet size is set to 900x900mm and the Quality is set to "Express".
2. Change sheet size to 700x700mm.
3. Change quality to High Definition.
4. Select File menu > Save as Template...
5. Select your template category again.
6. Change the ticket template name to "HighDef_700x700" (1).
7. Enable "Use as default template for device" (2) and click Save.
8. In the right bottom of the Layout Editor click "Submit job".
9. Select Delete job.



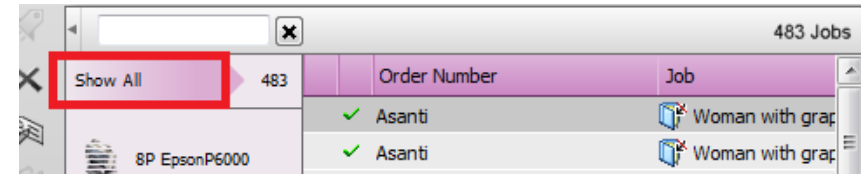
8. New from default device template

1. In the jobs window > devices pane, select the printer from the previous lessons. This filters jobs for this printer. The job list header is shown green with the text "x jobs for Anapurna". If the device pane is not visible select View Menu > Panes > Devices.
2. Context click your printer > New Layout job. The sheet size is set to 700x700 mm and Quality is set to High definition. This is because the default device template for this printer is used: "HighDef_700x700".



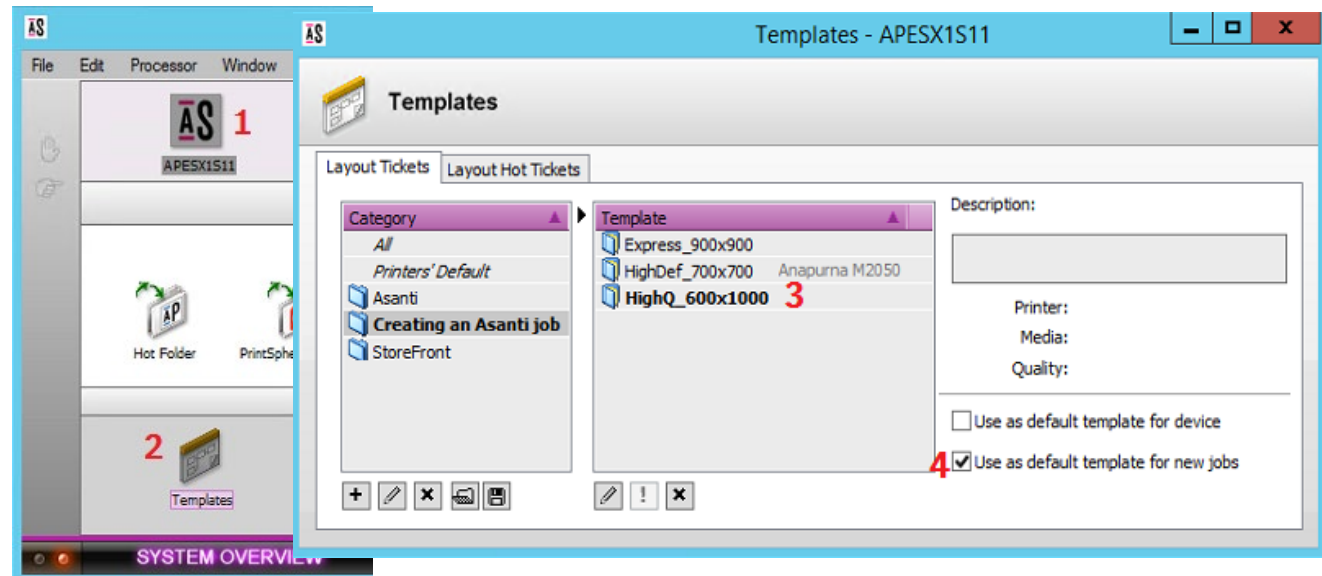
If there is no default device template for the selected printer, the default job template will be used.

3. In the right bottom of the Layout Editor click “Submit job”.
4. Select Delete job.
5. In the jobs window > devices pane, click “Show All”. This deactivates the device filter in the job list (job list header is not green anymore).



9. Manage Templates

1. Open the System Overview window, select the Asanti System icon (1) and open the Templates Resource (2).



2. Select Template “HighQ_600x1000” (3).
3. Enable “Use as default template for new jobs” (4). Now the template “HighQ_600x1000” is set Bold and will be used as default template.
4. Click the “Printers’ Default” category. This shows the default templates for different printers.
5. Close the Templates resource.

The Templates resource also allows you to rename template categories, move templates to other categories and delete categories and templates.