

Generic SD - Raster workflow

This tutorial demonstrates how to use the Generic SD, configured for a Raster workflow (there is a different tutorial for [working in PDF mode](#)). Asanti will provide direct drivers for devices listed in the [Asanti Supported Printers](#).

Sample Files: Download the Asanti Sample Files via the Asanti Client: Help > Asanti Online > Download Sample Files.

As mentioned above there are two Generic SD modes: PDF and Raster.

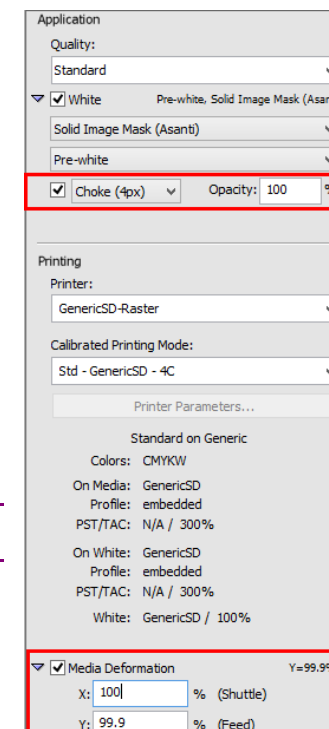
For both workflows a PDF file will be output that needs to be processed by a Third party RIP which has a direct driver for the non-Agfa Sign and Display device.

Generic SD with PDF workflow	Generic SD with Raster workflow
Not rendering in Asanti	Rendered in Asanti
No CMS used in Asanti	CMS done by Asanti
Single CPM possible/supported	Custom CPM's (Via wizard)

Additional Job Set-up options compared to generic SD with PDF workflow: White printing options (choke and opacity) and Media Deformation.

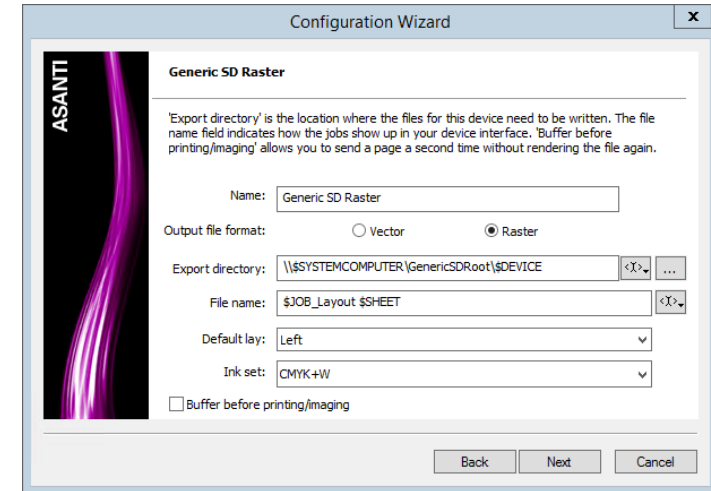
Therefore, the Printing White Tutorial could also be performed with a Generic SD in Raster workflow.

Configuring the Generic SD can be done in the configuration wizard.



1. Configure your Generic SD device

1. Open the System Overview and click slowly two times on the Generic SD name. When clicking properly, the name will highlight in blue, which indicates that you can rename it.
2. Type the name you prefer, we will call our device "GenericSD-Raster".
3. Start the Configuration Wizard (Help > Configuration wizard).
4. Configure your Generic SD device.
 Export directory = location where output PDF files are written.
 File name = name convention of output PDF files.
 Default lay = default edge where images aligned to when dragged on a Sheet.
5. Buffer before printing/imaging= If "Buffer each page before imaging" is on, then the renderer (or any other TP before the output TP (Generic SD Raster) is forced to write its raster data results to disk. Therefore, there is no "volatile connection" between Render and Printer.



2. Create a basic job

1. In the job list select File > New Layout Job.
2. Select the Generic SD (Raster Mode) printer, set the output size to 700x400 and select the Standard quality.
3. Select the Finishing inspector.
Set the Cutter to “Zünd” and the Finishing Margins to “iCut Corner Marks, between 5”.
4. Import the “Asanti Box_Pantones.pdf” file and drag the image twice on the sheet.
5. Submit Job > “Make and send to printer” for Print Files and “Make and send to cutter” for Cut Files.
6. Open the output PDF file from the Generic SD output folder (which we defined in the Configuration Wizard – see above).

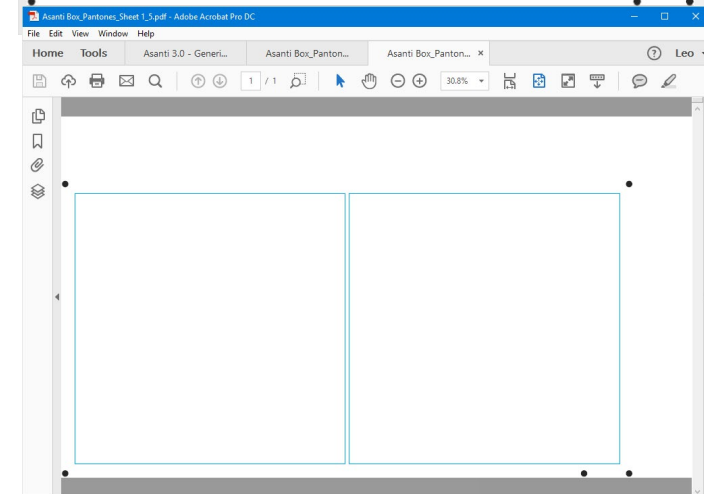
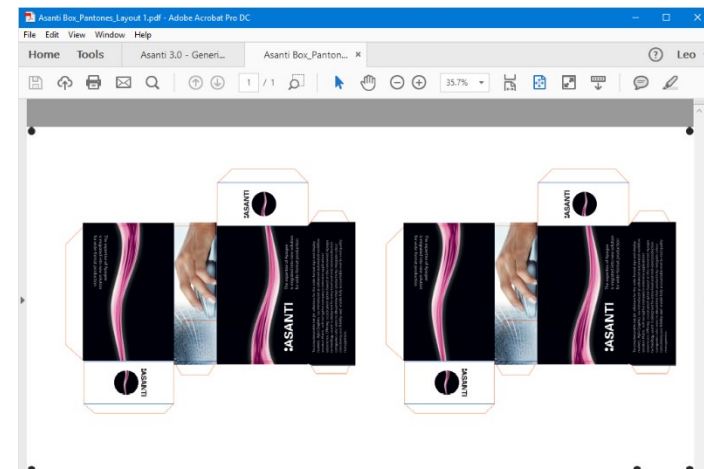
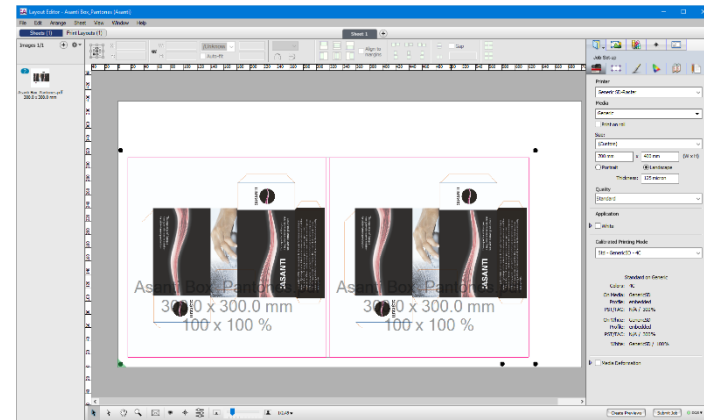
PDF dimensions are smaller as the media size of the Asanti job. The cut lines are in the output result, which is not wanted.

The file that is output by Asanti is a rendered continuous tone image (8 bit) with a PDF wrapper.

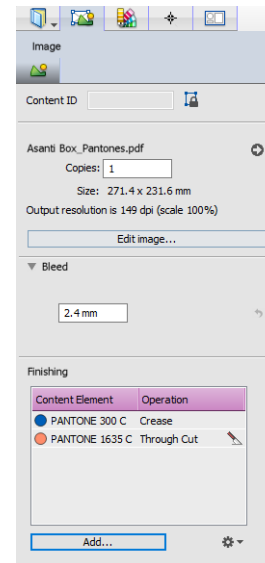
7. Open the Zünd cutting file (default location is the shared FinishingRoot folder):

The image frames are used as finishing operation which is not wanted. The cut lines that define the box shape should be used.

8. Close the PDF files.



9. Edit the job, select both images on the sheet (using SHIFT or CTRL) and open the Image Inspector.
10. Click the “Add...” button in the Finishing pane.
11. Select the “Through Cut” operation for the PANTONE 1635 C color.
12. Add also the PANTONE 300 C Finishing color and select the “Crease” operation.
13. Context click on “Frame” in the Finishing operations pane and click “Delete” to delete this finishing operation.
14. Click “Apply Changes” to update the Image thumbnails on your Print Layout (box cut lines are no longer shown: by defining them as Finishing operation they will be disabled for printing, see also Colors Inspector).
15. Submit Job > “Make and send to printer” for Print Files and “Make and send to cutter” for Cut Files.
16. Open the new Generic SD output result (this is the file with _1 added to the name) from the GenericSDRoot.

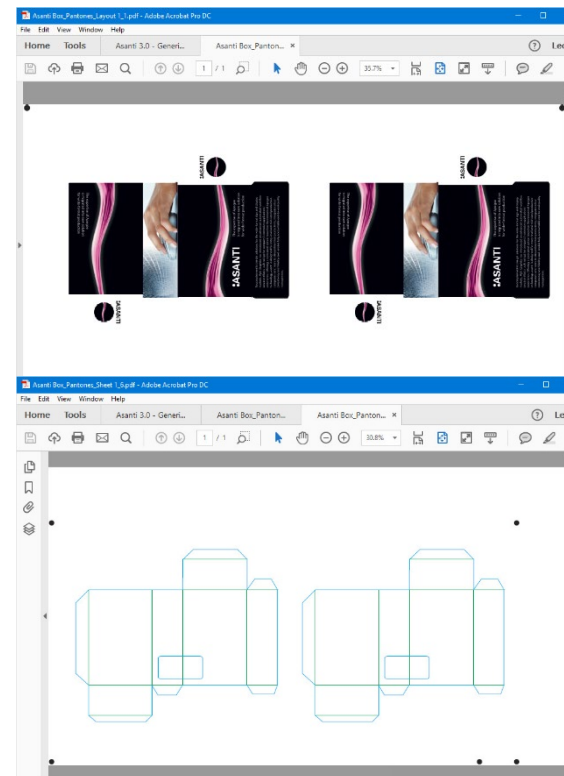


The cut lines (PANTONE colors which we defined as finishing color) are now no longer in the PDF file.

17. Open the new Zünd cutting file.

The file now includes the expected cut paths and cut (registration) marks.

18. Close the PDF files in Acrobat.



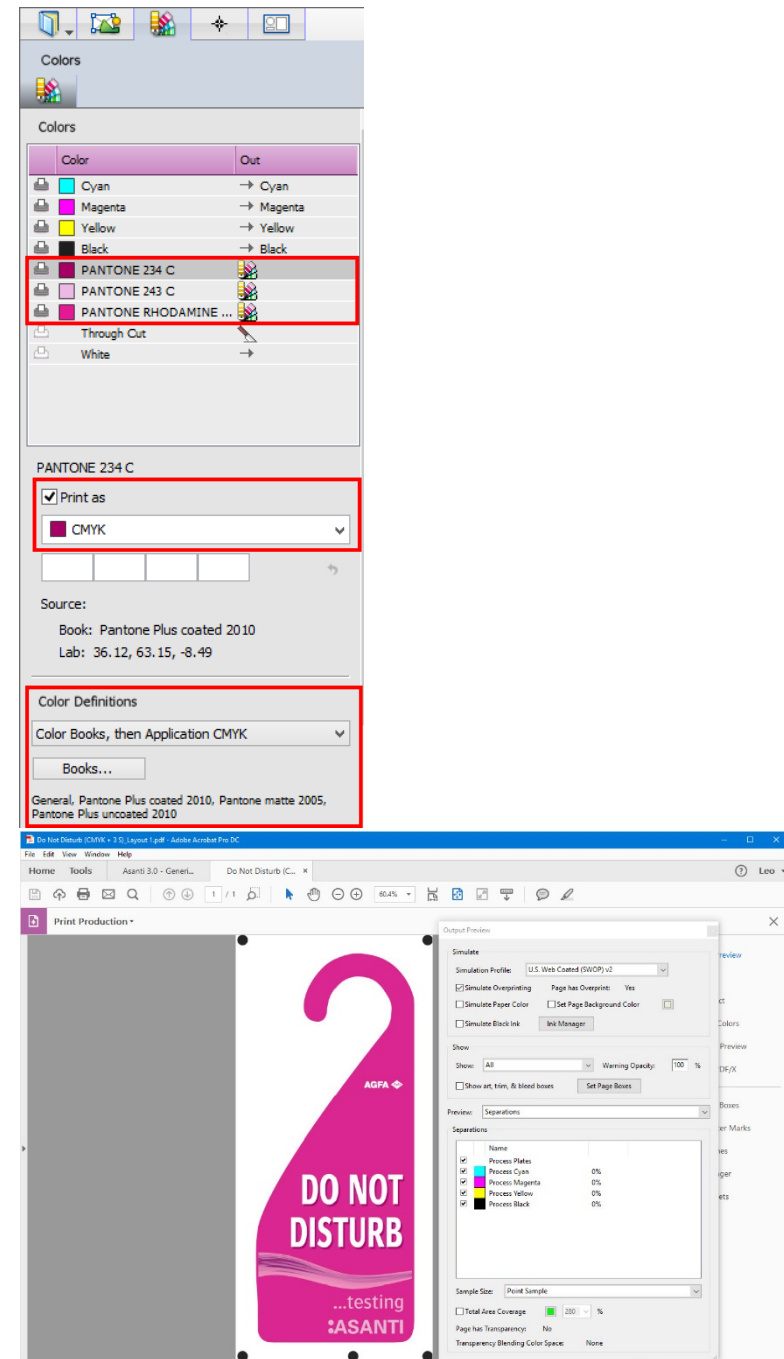
3. Converting spot colors

1. In the job list select File > New Layout Job.
2. Select the Generic SD (Raster Mode) printer, set the output size to 300x300, and select the Standard quality.
3. Select the Finishing inspector.
Set the Cutter to “Zünd” and the Finishing Margins to “iCut Corner Marks, between 5” Import the “Do Not Disturb (CMYK + 3 S).pdf” file and drag the image on the sheet.
4. Select the image on your sheet and open the Image Inspector to verify that the spot color ‘Through Cut’ is recognized as a “Through Cut” finishing operation.
5. Open the Colors inspector and make sure that the three PANTONE colors will be converted to CMYK based on the Color Book definition.
6. Submit Job > “Make and send to printer” for Print Files and “Make and send to cutter” for Cut Files.
7. Browse to the Generic SD root and open the “Do Not Disturb (CMYK + 3 S) Layout 1.pdf” file.
8. Select Tools > Print Production > Output Preview to inspect the content colors.

As you can see all the Pantone colors are converted to CYMK using the Asanti CMS mode.

NOTE: Generic SD with PDF workflow would not convert these spots, that would have to be done on the Third Party RIP using the CMS of the Third Party RIP.

9. Close the PDF file.

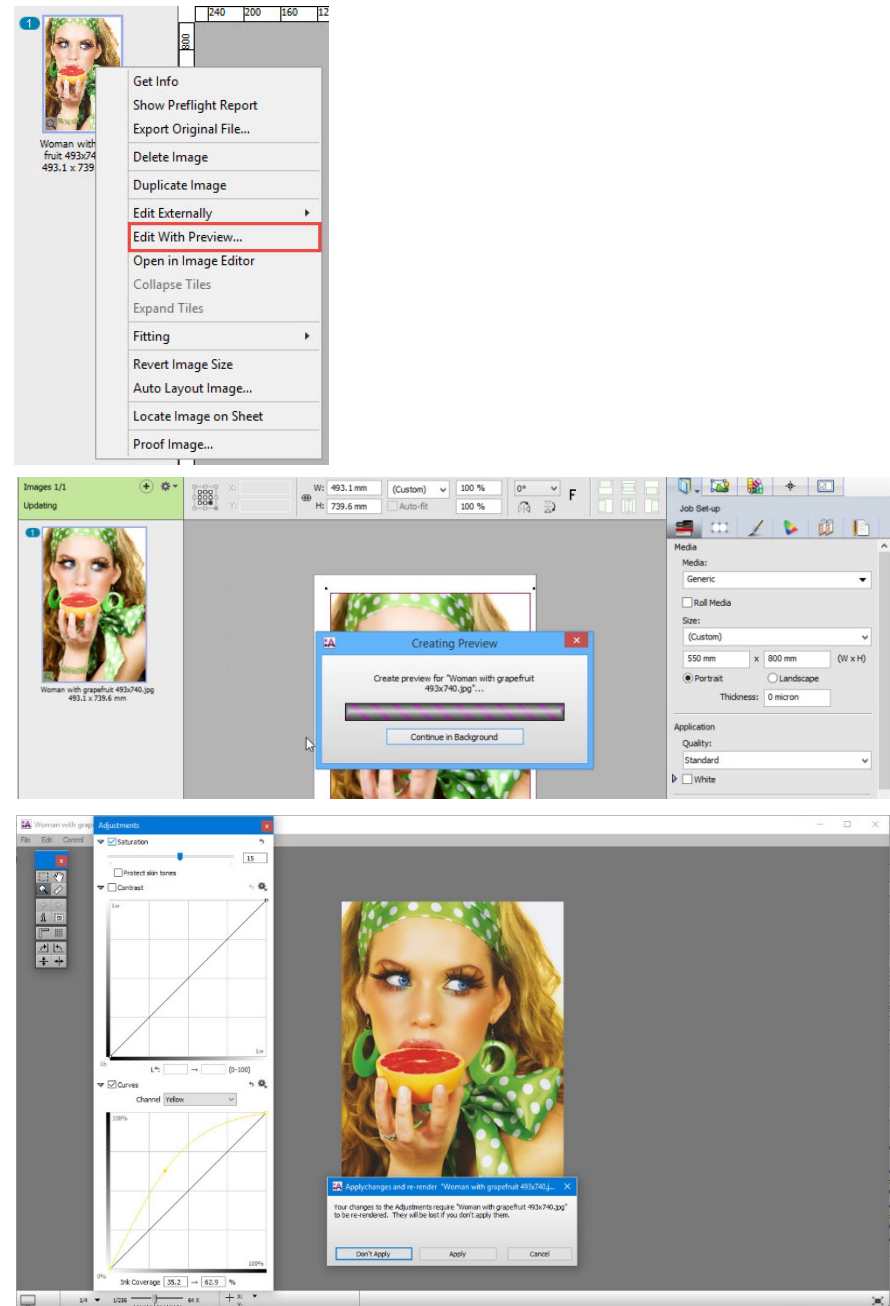


4. Customize colors by applying curves

1. In the job list select File > New Layout Job.
2. Select the Generic SD (Raster Mode) printer, set the output size to 550x800 and select the Standard quality.
3. Select the Finishing inspector.
Set the Cutter to “Zünd” and the Finishing Margins to “iCut Corner Marks, between 5”.
4. Import the “Woman with grapefruit 493x740.jpg” file and drag the image on the sheet.
5. Submit Job > “Make and send to printer” for Print Files and “Make and send to cutter” for Cut Files.
6. When the job is processed, double click to open the job in the layout editor, select the image in the images pane and right click to open the menu. Select “Edit with Preview”.

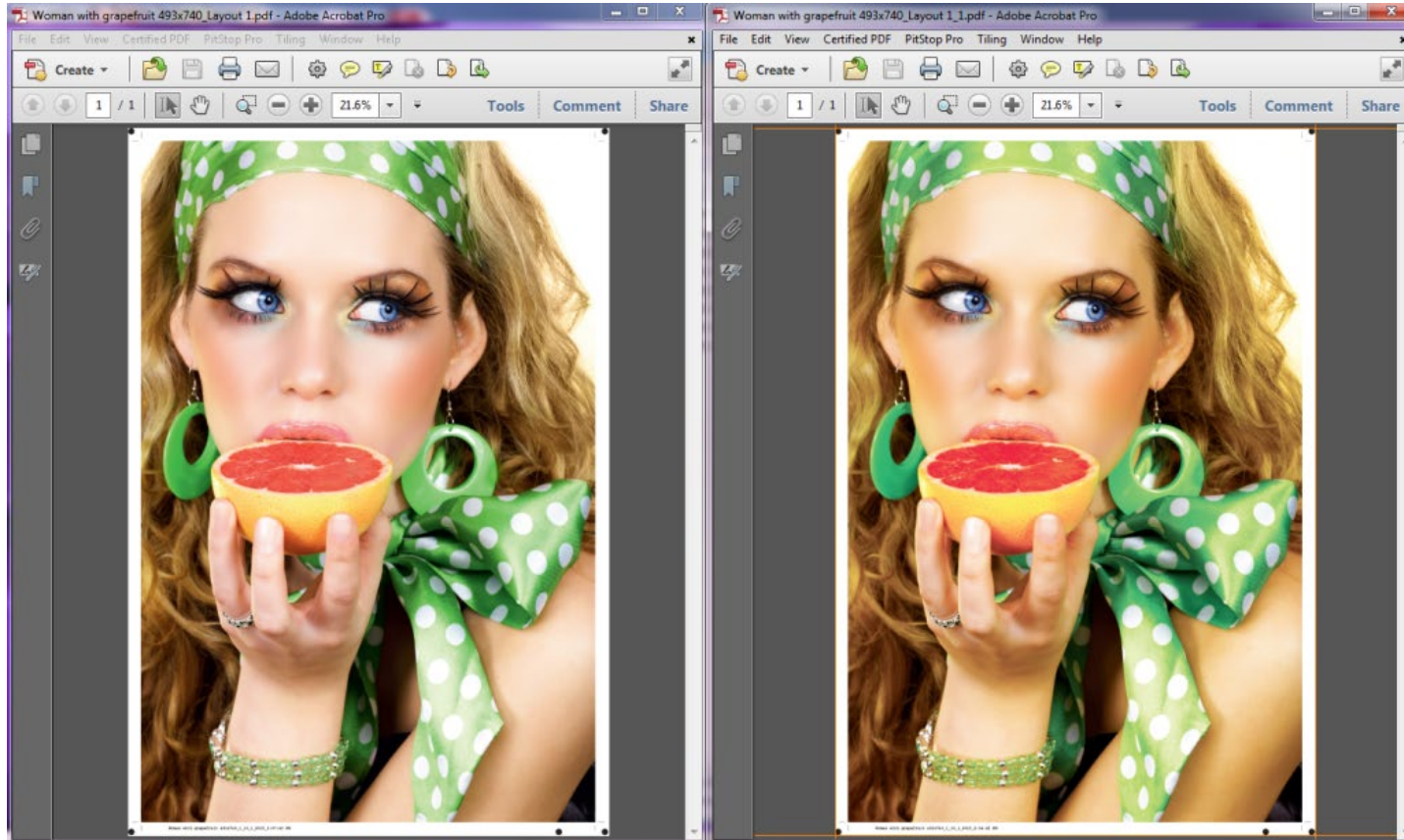
The image will now be rendered at low resolution. This low-resolution rendering is called the preview. This preview might have been already created in the background (Joblist Edit > Preferences > General tab – Create color-managed Previews when adding images). The Raster Preview will open when the preview is created.

7. Enable “Saturation”, set the value to 15 and enable “Protect skin tones”.
8. Enable “Curves”, set channel to “Yellow” and change the curve (emphasize yellow).
9. Close the Raster Preview and click the “Apply” button to apply the changes you have made in the Adjustments dialog.
10. Submit Job > “Make and send to printer” for Print Files and “Make and send to cutter” for Cut Files.



11. Browse to the Generic SD root and open the “Woman with grapefruit 493x740_Layout 1.pdf” and “Woman with grapefruit 493x740_Layout 1_1.pdf” files.

Compare both files to see the effects of our color adjustments.



12. Close the PDF files.

NOTE: Making these adjustments would have no effect in the PDF mode because the job is not rendered in the Generic SD with PDF workflow.