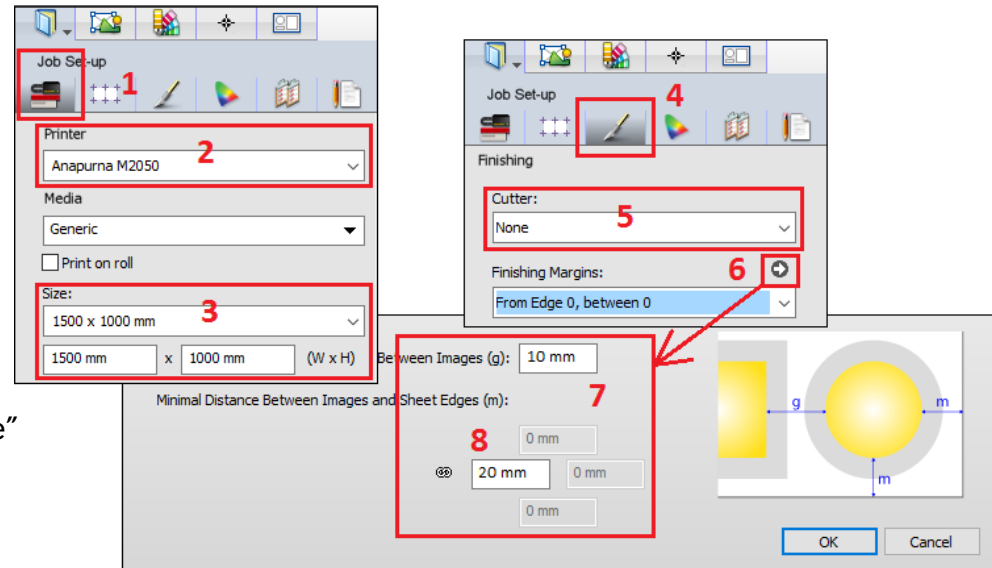


This tutorial demonstrates how to manually position images in the Asanti Layout Editor. Sample files: Download the Asanti Sample Files via the Asanti Client (Help >Asanti Online > Download Sample Files).

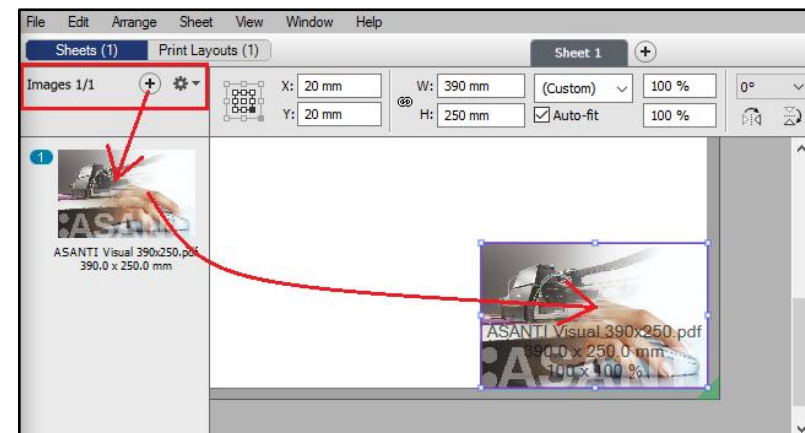
1. Create a new job

1. File > New Layout job.
2. In Job Set-up inspector (1) select a Printing Device (2).
3. Select a Size e.g. "1500 x 1000 mm" (3).
4. Open the Finishing inspector (4).
5. Select Cutter "None" (5).
6. Click the arrow next to the "Finishing Margins" title (6).
7. Set "Minimal Distance Between Images" to 10 mm (7).
8. Set "Minimal Distance Between Images and sheet Edges" to 20 mm (8).
9. Click OK.
10. Click on the eye icon to open the View Options palette and verify if Sheet "Lay", Sheet "Margins" and Image "Bleed zone" are selected.

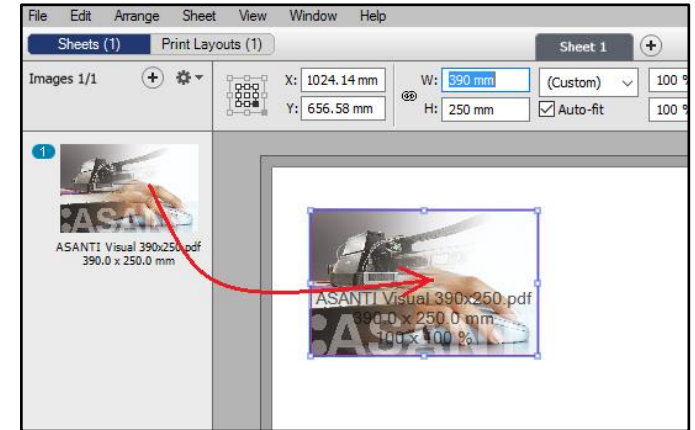


2. Place an image

1. In the Images Panel click "+", browse for "ASANTI Visual 390x250.pdf" and click Open.
2. Drag and drop the image from the Images panel to the Sheet. For our selected Anapurna device, the Sheet lay is the lower right corner. The image is automatically placed in this corner with respect to the "Finishing Margins" (for other devices the Sheet lay can be the lower left corner e.g. Jeti).

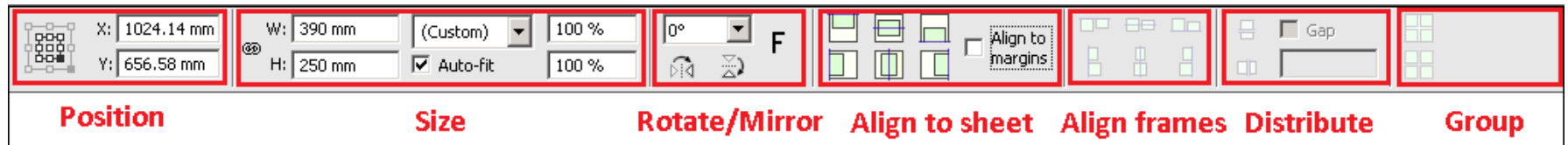


3. Delete the image and drag it again but now press SHIFT when you release the mouse button to place the image where you drop it.

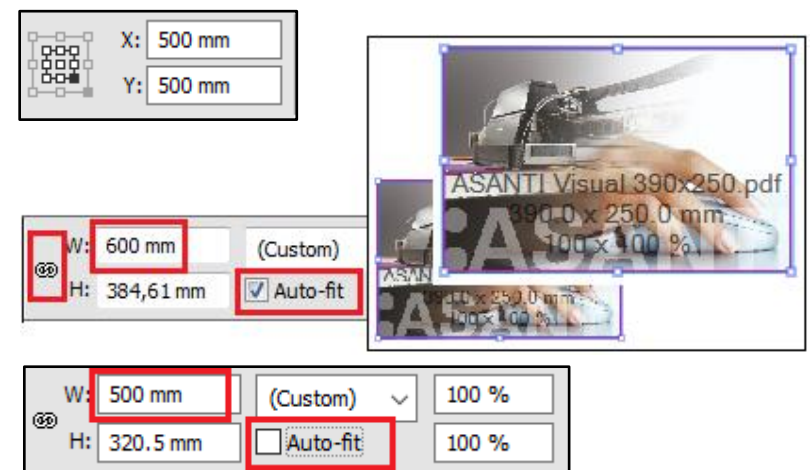



3. Using the Positioning Toolbar

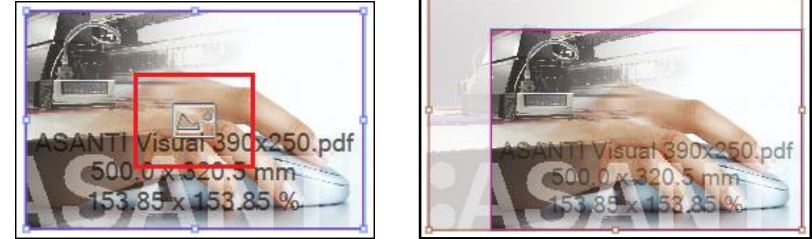
1. You can hide the Inspector Pane (CTRL+Shift+I) when the complete Positioning Toolbar is not visible.



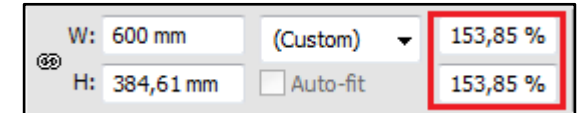
2. The Position group shows the Sheet Lay position (gray square) and Image reference corner (black square) with its coordinates from the Sheet Lay. Change the coordinates and notice how the image moves on the sheet.
3. In the Size group make sure that the chain icon is not broken and that the Auto-fit checkbox is selected. Then change the width to 600 mm to scale the frame and image proportionally.
4. Disable the Auto-fit option and change the width to 500 mm to only scale the frame but not the image.



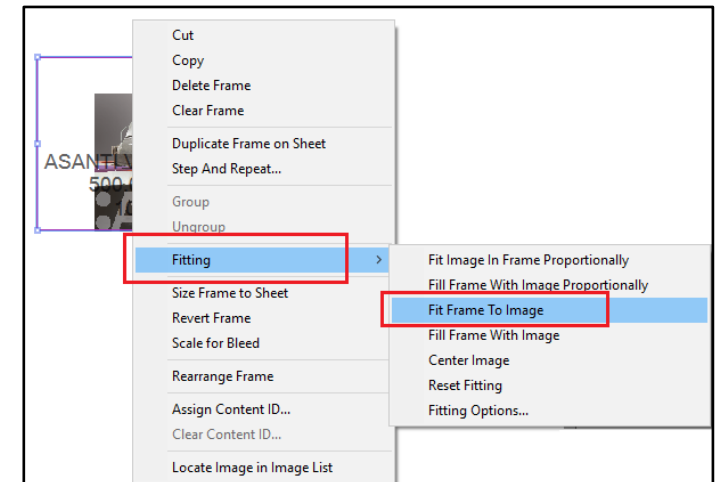
- To verify this, move the cursor over the image and click on the  icon. The image is now selected which is indicated by the brown border and handles. The frame has a blue border and handles. The frame shows what will be printed.



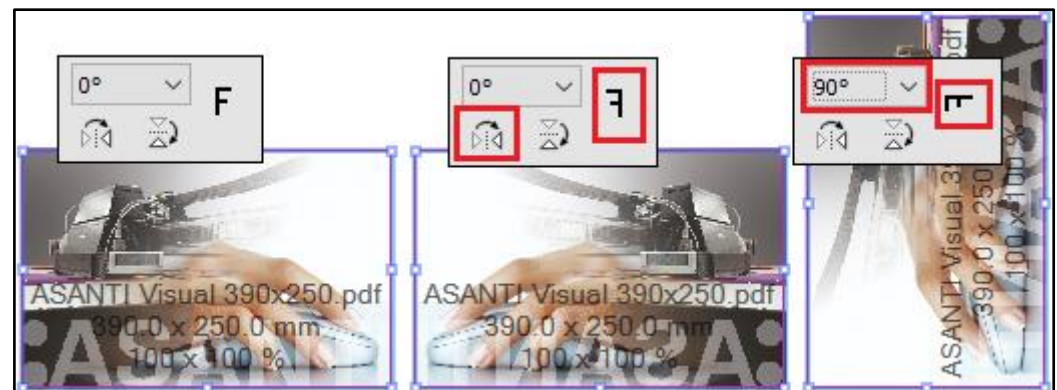
- Notice the image scale factor in the positioning toolbar. Change it to 100 % to reset the original image size.



- Click somewhere in the blank area between the image and the frame to select the frame.
- Context click on the image frame and select Fitting > Fit Frame To Image.

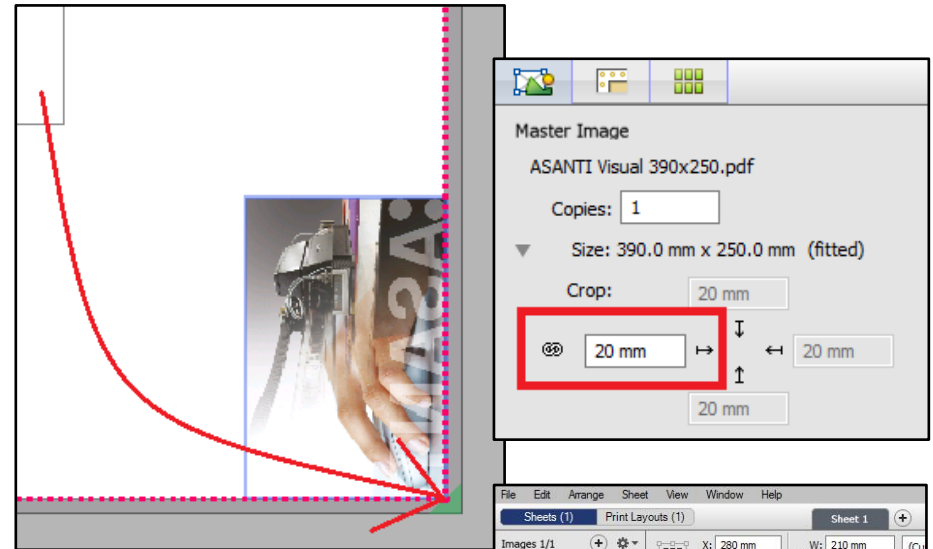


- In the Rotate/Mirror group click the “Mirror Horizontally” icon and select 90° from the “Rotate” drop down list.

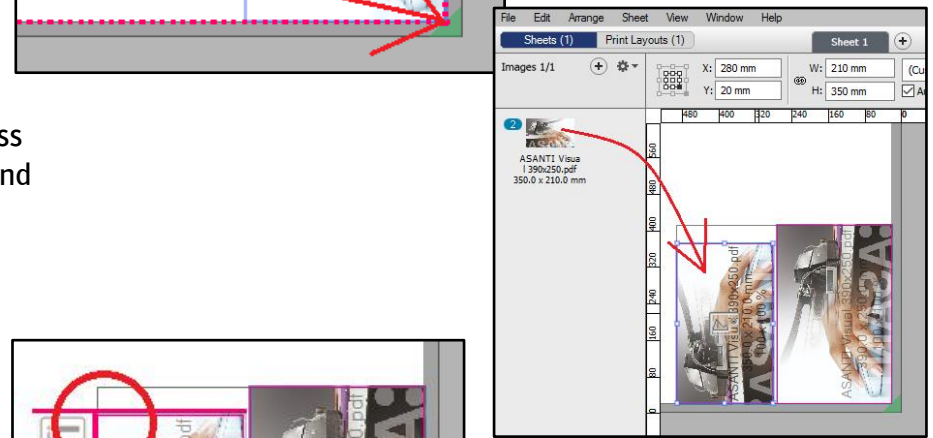


4. Positioning multiple images on the Print Layout

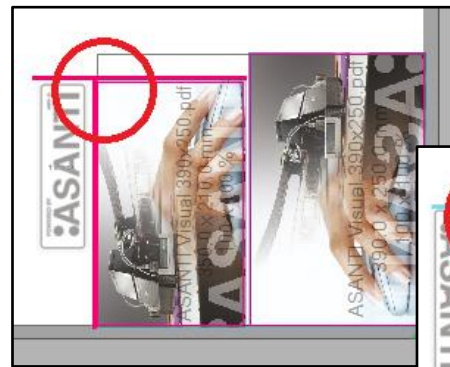
1. Select the frame and drag it towards the right bottom corner.
2. Double click the image in the Images panel to open the Image editor. Change all Crop values to 20 mm and click Apply.



3. Drag the cropped image from the Images panel to the Sheet. Press SPACE once to rotate the image 90 degrees Counter Clockwise and drop it. It is placed next to the first one with 10 mm distance between the frames. Only this one is cropped, the first one remains untouched.



4. Click "+" to add another image. Browse for "Asanti-sticker-01.pdf" and click Open.

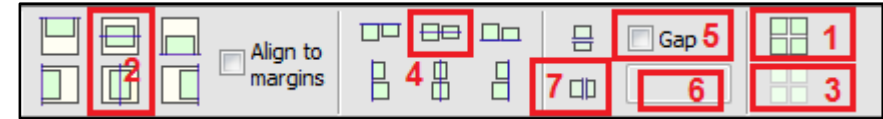


5. Drag the image to the Sheet, hold and rotate it. Press SHIFT and drop it next to the previous image when solid magenta lines appear on top and right side. This aligns the tops and keeps the 10 mm distance.

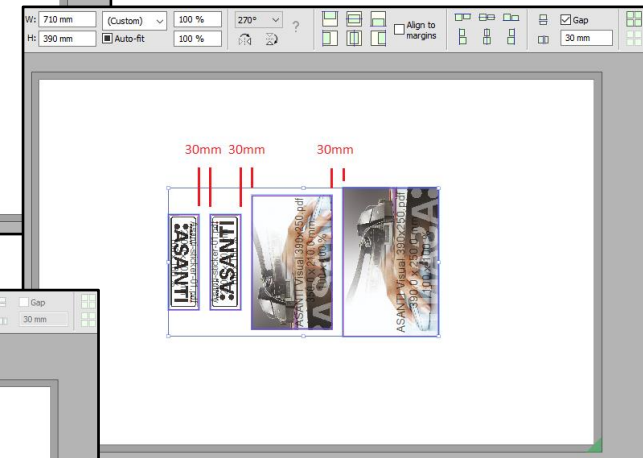
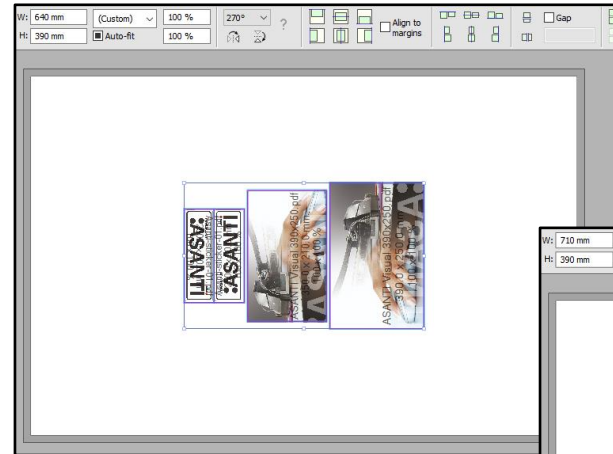


6. Drag the same image again but press SHIFT+SPACE to rotate the image 90 degrees Clockwise. Press SHIFT+ALT (to ignore the image margins) and drop it when solid cyan lines appear at the top and right side.

- 7. Select CTRL+A and click the Group button to group all images (1).

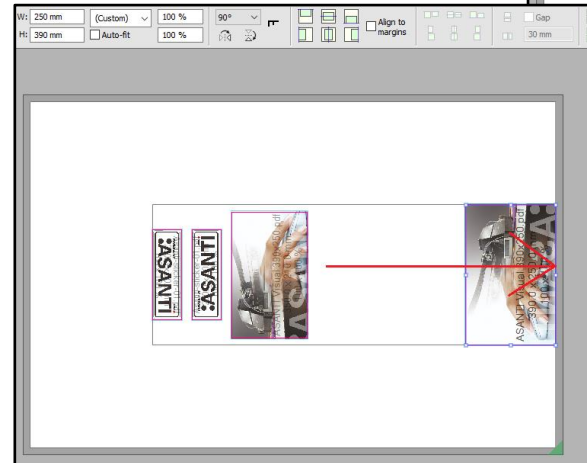


- 8. Click the Horizontal and Vertical center buttons (2).
- 9. Click the Ungroup button (3) and then click the Align Vertical Centers button (4).
- 10. Enable the Gap option (5) and enter 30 mm as value (6). Click now on the Distribute elements horizontally button (7) to create a gap of 30 mm between the image frames.

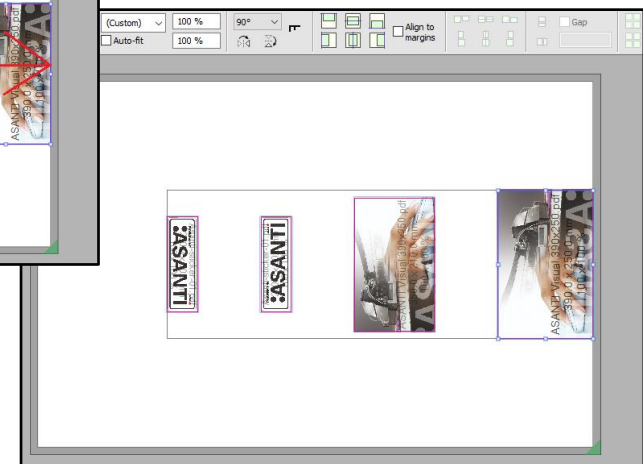


- 11. Click in the white area outside the selected frames to deselect all images.

- 12. Select the first frame and drag it to the right margin.



- 13. Press CTRL+A and disable the Gap option. Click now the Distribute elements horizontally button to distribute gaps evenly.



- 14. Submit the job.